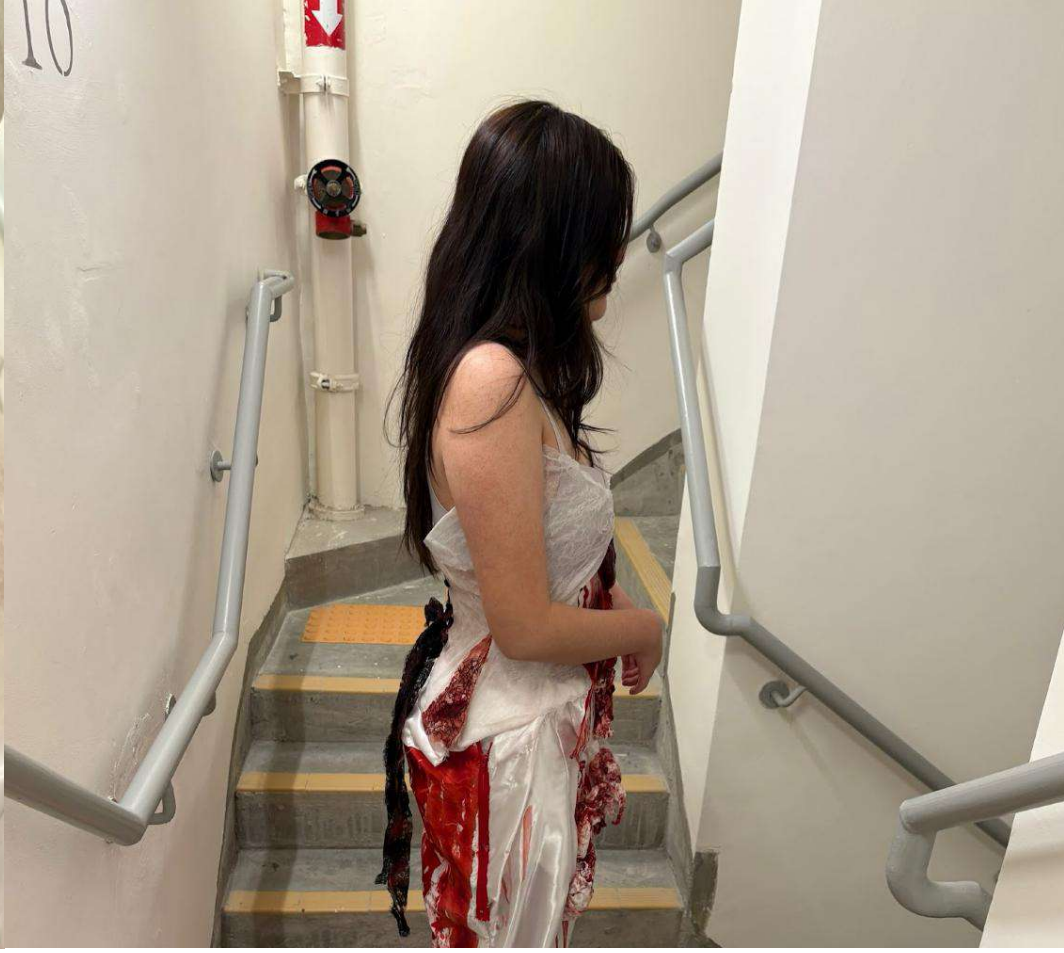


Final outcome
Clay, beads, lace and
polyester fabric





Heartbreak

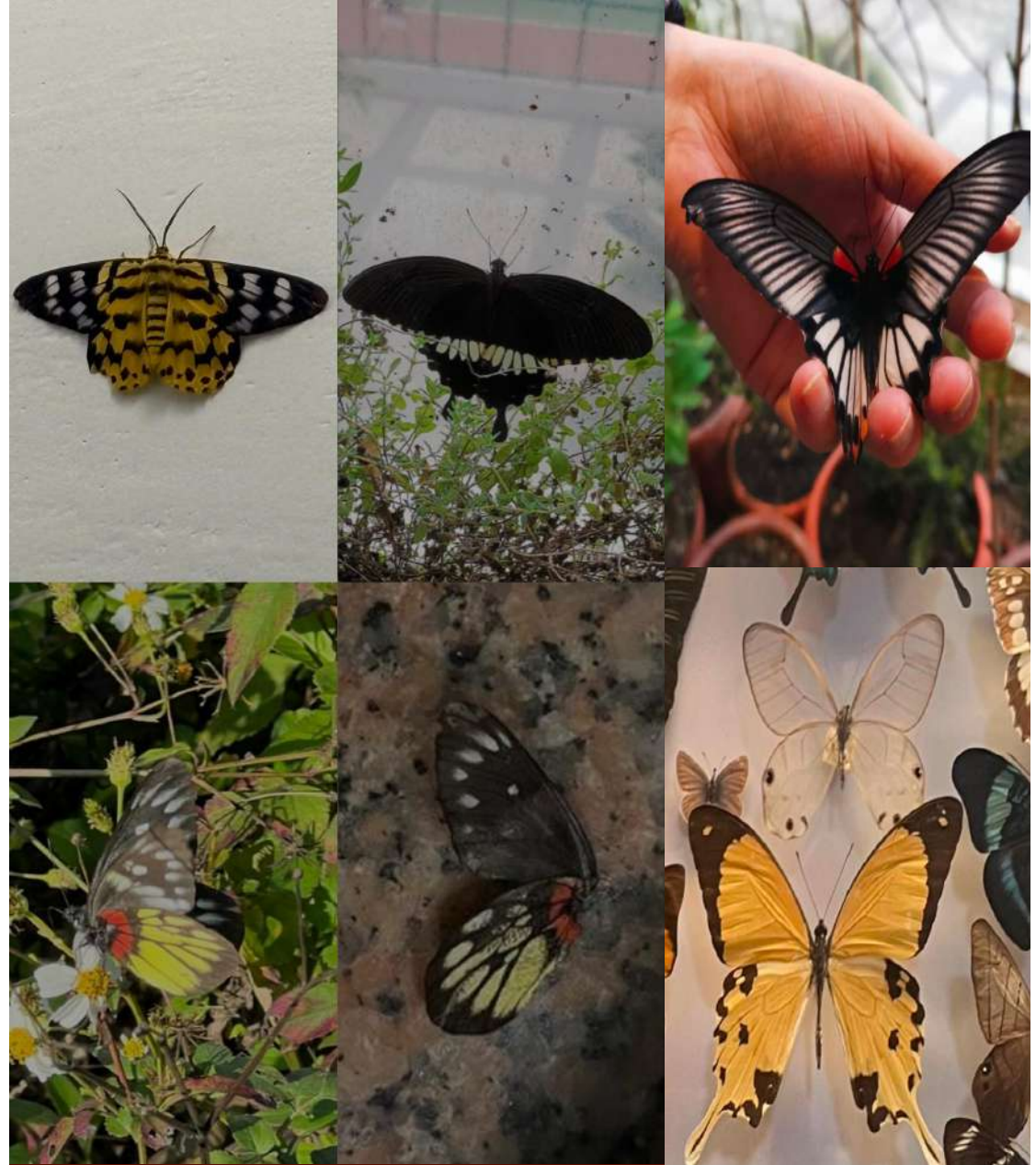
As I delve into the theme of heartbreak for my IGCSE textiles project, I find inspiration in the butterfly. Heartbreak can unravel me like loose threads, revealing deep emotions beneath the surface. However, just as a butterfly transforms from a painful chrysalis, I believe I can turn my sadness into something beautiful. I was also inspired by the 1976 film 'Carrie' and the emonous abuse and heartbreak she had gone through up until her death. Even so she couldn't get people to understand her side of the story. Through my artwork, I want to convey that it's perfectly okay to experience heartache; it's part of being human. I'm excited to explore various techniques, including resin and textile layering, to illustrate my path to healing and resilience. Each piece will showcase the beauty that can emerge from pain, reflecting how beauty can blossom from sorrow.

Colour Scheme





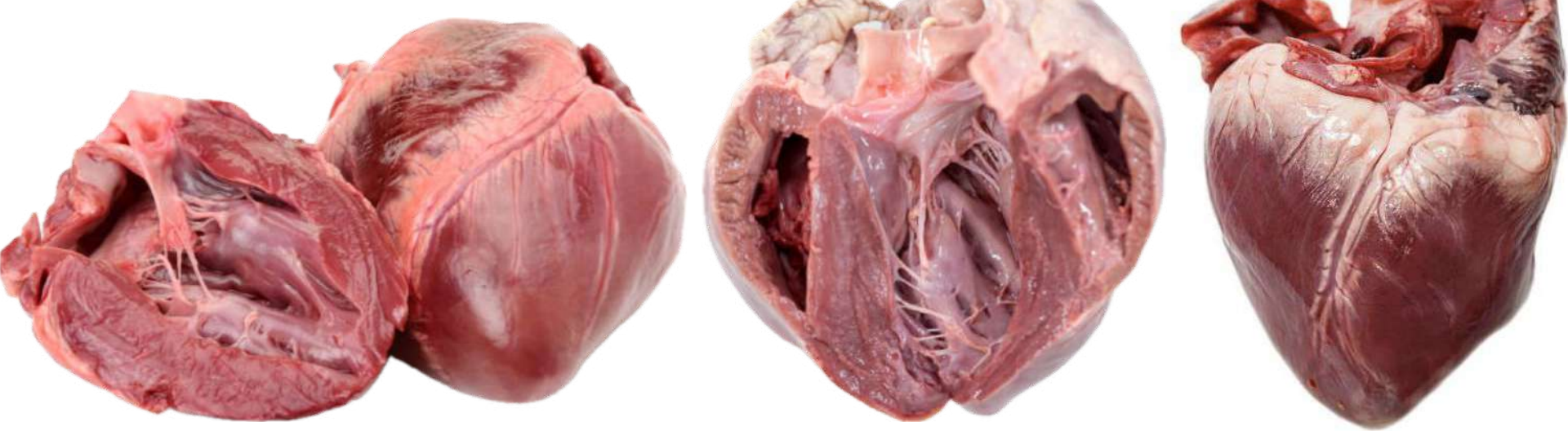
In the image, the butterfly's delicate wings are highlighted, showcasing intricate patterns in rich browns and oranges. This beauty evokes a bittersweet sensation, akin to the pain of heartbreak. Like the butterfly, our hearts are fragile, carrying joyful moments that can quickly fade into sorrow. The detailed wings symbolize transformation, suggesting that even amidst struggles, renewal is possible. By contemplating this stillness, we recognize that heartbreak can lead to growth, mirroring the butterfly's journey and demonstrating that change can usher in new beginnings.



This collection of butterflies reflects the complexities of heartbreak. The striking yellow and black butterfly symbolizes joy intertwined with sorrow, while the dark butterfly with white markings represents the uncertainty we feel amid emotional pain. The vibrant one in the lower left, flitting among greenery, mirrors our desire to move forward despite heartache. In the bottom right, two butterflies resting together highlight both companionship and potential loss. Their intricate patterns echo the tangled emotions of heartbreak, reminding us that even in grief, beauty and resilience remain as we navigate the journey of healing.

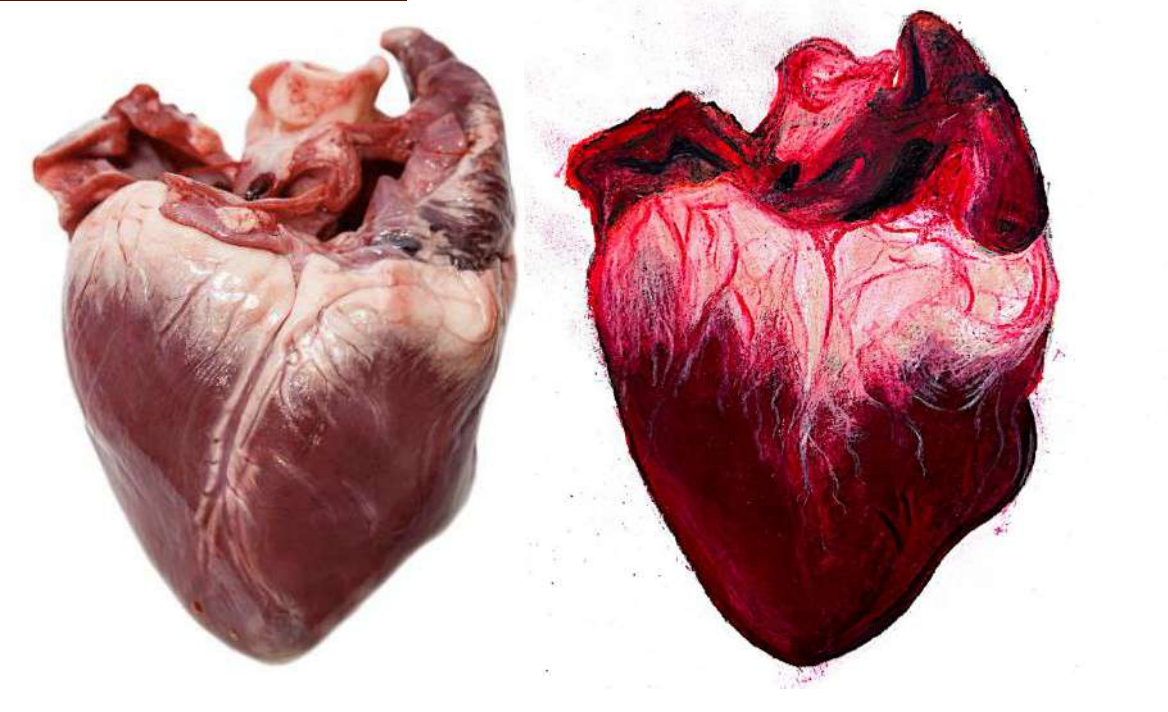


I visited the HK Science Museum, where a stunning display of butterflies captivated me. The vibrant Lime and Blue Morpho butterflies symbolize fleeting joy and beauty amid heartbreak. Surrounding specimens, like the assorted butterflies in intricate arrangements, represent the complex emotions tied to love and loss. Darker butterflies capture the pain of separation, while the elegant designs echo that profound beauty can emerge from sorrow. Each delicate specimen, preserved in glass, illustrates how heartache transforms vibrant memories into poignant reminders that healing often follows, as we navigate the intricate journey of our emotions.



In the image, several raw hearts reveal their intricate internal structures, with some whole and others partially open, evoking a sense of vulnerability. As I gaze at these hearts, I'm reminded of my emotional heart during times of heartbreak. Just like the exposed tissues within these hearts, our emotions can feel laid bare during moments of loss. Each tear mirrors a crack in our own hearts, highlighting how deeply intertwined our feelings are with our physical being. This imagery serves as a poignant reminder that while heartbreak can cause immense pain, it also allows for growth and healing, transforming sorrow into strength.

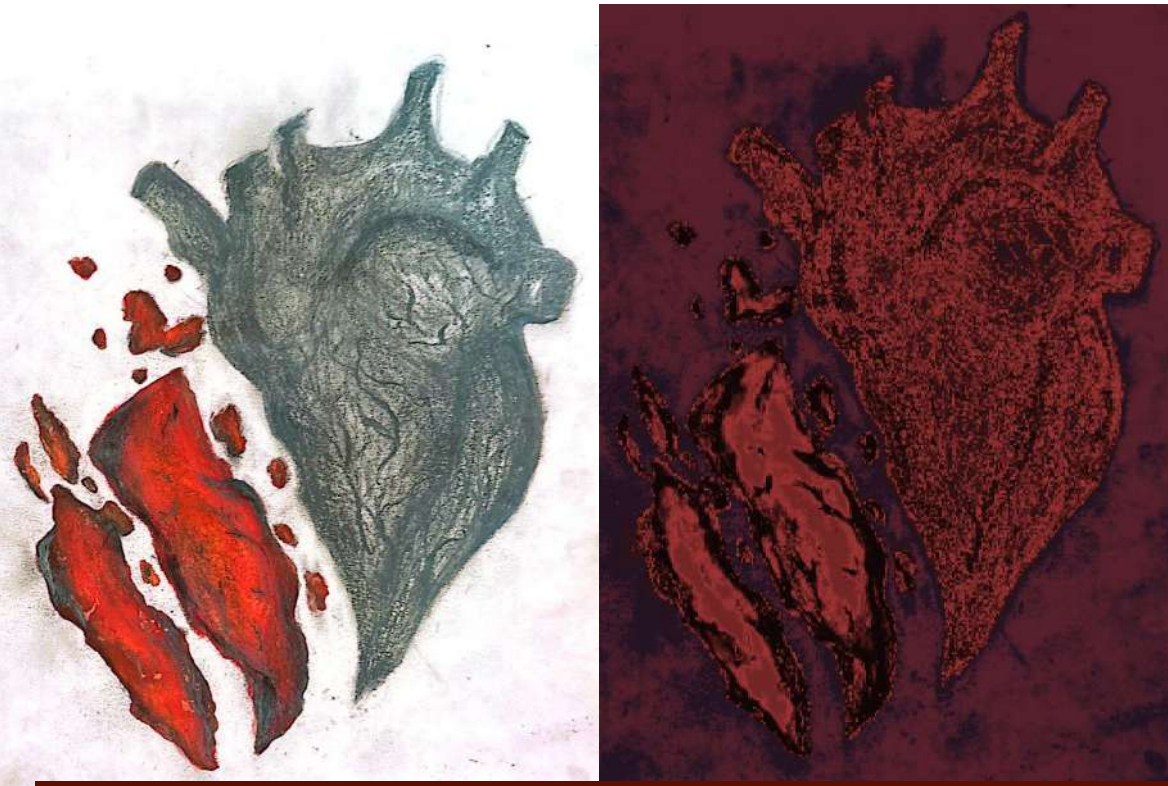
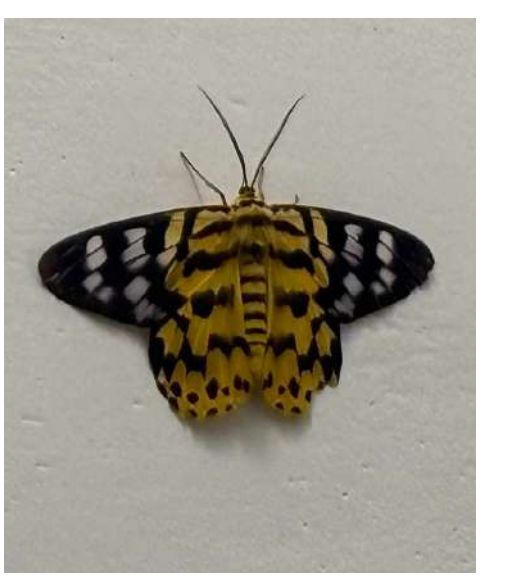
Observational drawing



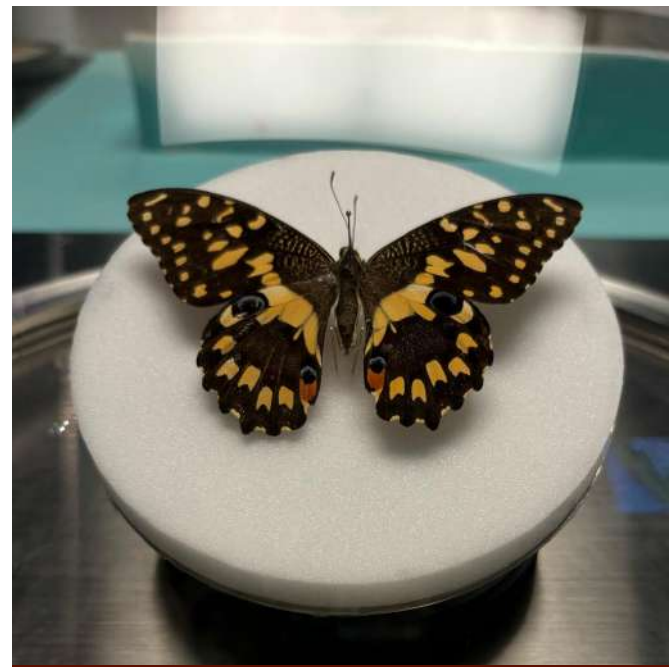
I began by sketching the shape of a heart and then applied acrylic paints as a base. To add detail, I incorporated mixed media techniques using colored pencils. The choice of dark, muted colors—deep reds, blacks, and grays—evokes a profound sense of sadness and despair



I begin with a continuous drawing of a human heart, utilizing markers and chalk to create depth and texture that symbolize the fragility of emotions. Layering watercolors in deep crimson and muted grays captures the intensity of love intertwined with sorrow, representing a heart that is both vibrant and shattered. Then using this drawing I had set the gradient map to mystic, I had dim the brightness, creating a more realistic feeling. On top of that I had paste butterflies which I had used the curve feature to make it more red, emphasising the theme of heartbreak.



I employed three techniques—shading, watercolor, and colored pencil—to convey the complexities of heartbreak. One side portrays a shaded heart, embodying the stillness and sorrow of loss, while the other bursts with vibrant watercolor, representing the chaotic emotions that ensue. The layered colored pencil adds depth, intensifying the stark contrast between emotional numbness and turmoil, ultimately emphasizing the profound theme of heartbreak. I had use this observation drawing and set the colour balance to red, I then turn on the saturation and lower the brightness, to display realistic colour of an heart. I also turned the gradient map into noir, evoke an uneasy feeling and loneliness to the piece

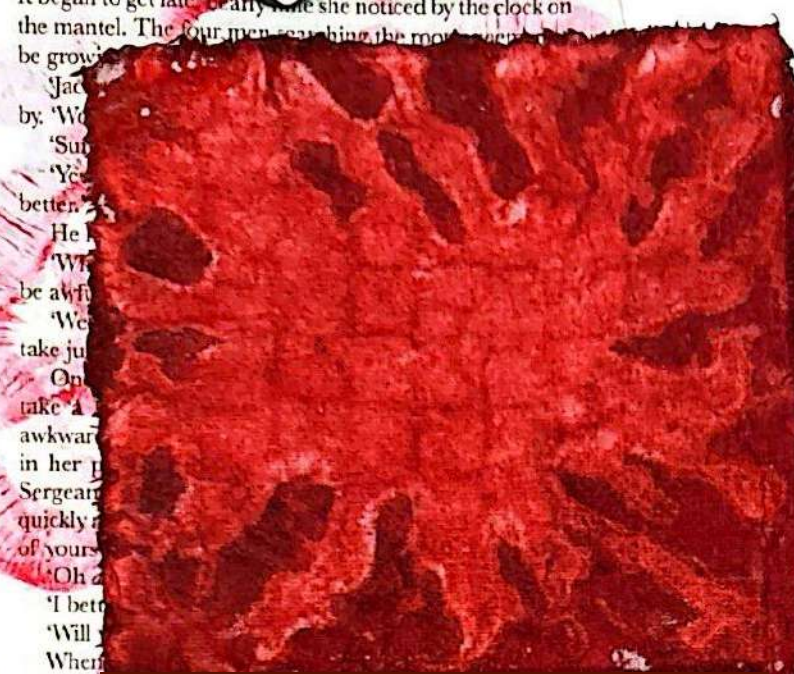


I sketched a butterfly, using watercolor as a base to establish a delicate foundation. To enhance its emotional resonance, I carefully selected shades of red, alongside black and white, to fill in the details. The choice of red signifies the intense emotions associated with heartbreak, while the contrasting black and white represent the duality of pain and hope. This combination emphasizes the fragility of beauty amid sorrow, encapsulating the essence of heartbreak in my drawing.



I sketched the outline of a butterfly and then began shading with HB and 2B pencils, aiming to capture its realistic features. I had used the tool colour balance to create the texture of a heart the background, I also dim the brightness to illustrate the lost of hope and desperation

DYING PAGE



I used cotton as fabric, then I applied a layer of glue on top to create a design in the shape of a heart. After that, I dyed the fabric in a vivid scarlet red, representing the passionate yet painful emotions of heartbreak.



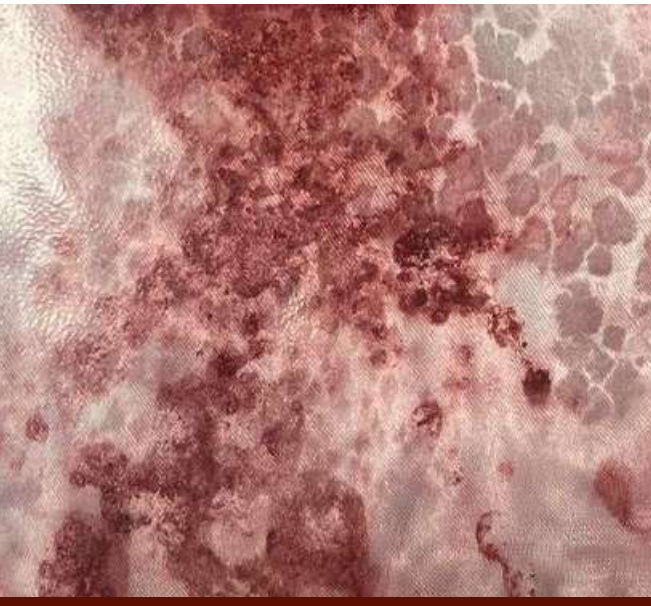
I chose linen fabric, scrunched it up, and applied a layer of salt, symbolizing tears. Then, I dyed it in both scarlet red and deep marron brown, embodying the conflicting emotions of love and loss.



I added a thick layer of glue in the shape of a heart and then dyed the fabric red, portraying the sorrow intertwined with love, as it becomes difficult to distinguish between joy and heartache.



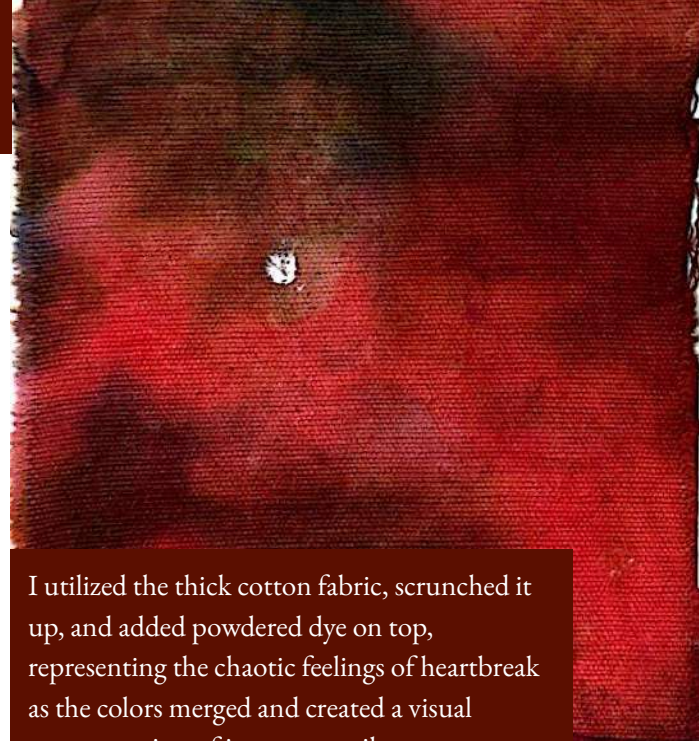
I stuffed cotton balls inside the fabric and dyed it scarlet red and marron brown, symbolizing the soft yet painful memories that remain in one's heart after love fades.



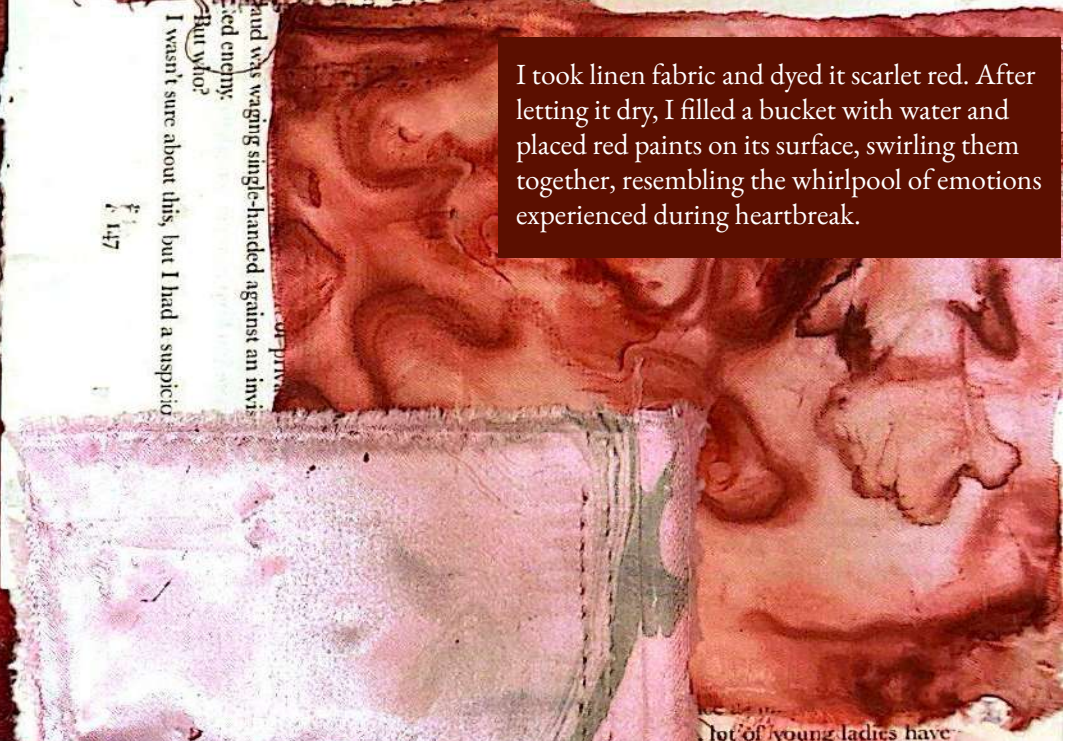
I dyed silk fabric in a gentle pink first, symbolizing the innocence of love. Then, I dyed salt red and sprinkled it on top, representing the bittersweet remnants of heartbreak that linger.



I dyed two pieces of linen separately and applied a thick layer of glue on top, then combined them together. This act created lines and textures, symbolizing the scars left behind and the resilience formed through the process of healing from heartbreak.



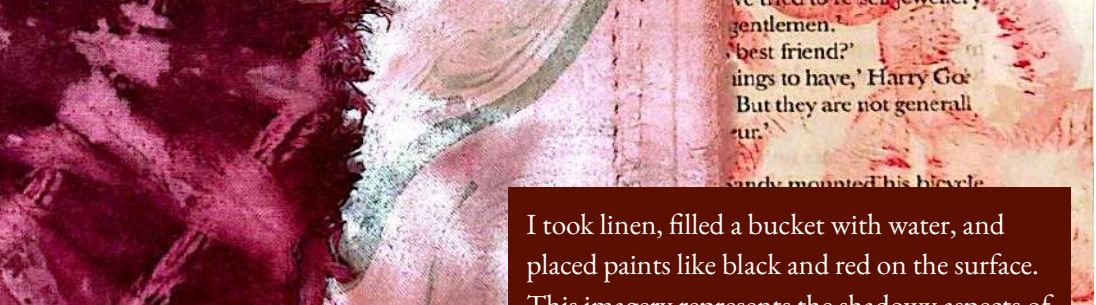
I utilized the thick cotton fabric, scrunched it up, and added powdered dye on top, representing the chaotic feelings of heartbreak as the colors merged and created a visual representation of inner turmoil.



I took linen fabric and dyed it scarlet red. After letting it dry, I filled a bucket with water and placed red paints on its surface, swirling them together, resembling the whirlpool of emotions experienced during heartbreak.



I used linen fabric, scrunched it from the middle, and tied it five times. I introduced purple and brown dye, illustrating the complexity of emotions and the knots formed in the heart during times of heartbreak.



I took linen, filled a bucket with water, and placed paints like black and red on the surface. This imagery represents the shadowy aspects of heartbreak, where darkness and pain often intertwine.



Creating a custom stencil tailored to my theme enhances the overall impact. The use of dark colors evokes a sense of sadness and despair, perfectly aligning with the feelings associated with heartbreak.



I selected two photo manipulation designs that resonate most with the theme and performed a heat press process. My designs were placed on top of a piece of silk and treated in a heat press machine for 30 seconds at approximately 275 degrees. This technique beautifully transfers the emotion onto the fabric.



I crafted a butterfly stencil using an Exacto knife and then sprayed it with red and black paint. Mirroring the design ensures that it appears symmetrical on both sides, reflecting the duality of love and loss.



I cut a section of web-like fabric and sprayed it with red and black paint, layering it over cotton fabric. This combination symbolizes the tangled emotions experienced during heartbreak.

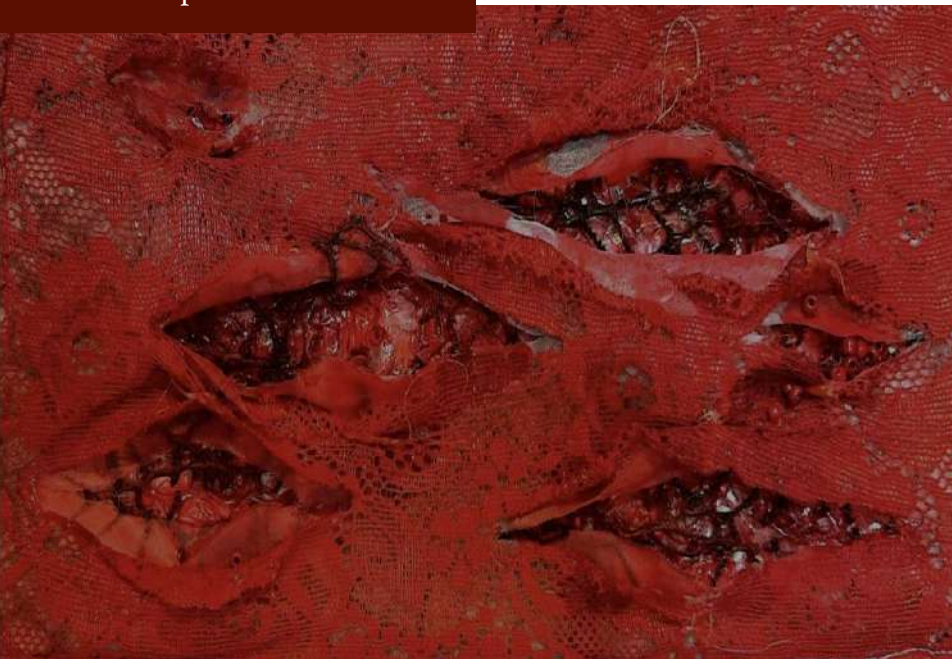


I cut a piece of fruit mesh and spray-painted it red and black, layering it over a sheer mesh. This juxtaposition draws parallels between the fragility of love and the intricacies of relationship dynamics.



Handpicking a rough-textured cotton fabric contributes to an uneasy feeling of being stuck. Applying spray paint onto the lace amplifies this emotional state, further enhancing the theme.

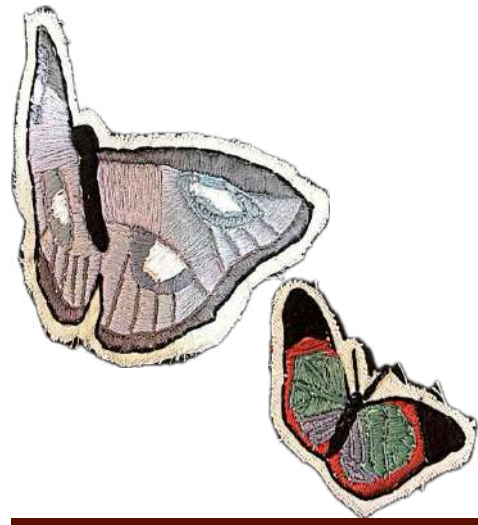
Fabric manipulation



I used the technique of slashing and incorporated multiple layers to symbolize the stages of heartbreak. Starting with a silver fabric as the base, I added bubble wrap and then sprayed the web-like fabric with red and black paint. On top, I dyed the fabric scarlet red and sewed it all together. Finally, I added a layer of red clear slime to create the appearance of a heart.



Using the technique of pleating, I pinched each fabric every 1 cm and sewed it together. I then added a layer of wax in the shape of a butterfly, dyeing it red. On top of this, I attached butterflies cut from different fabrics to further accentuate the theme of love and loss.



Through hand embroidery, I selected various colored yarns to create a butterfly design, reflecting the wide range of emotions felt during heartbreak. Securing the fabric in an embroidery hoop allowed me to manage the work, just as one must confront and process their feelings after a relationship ends. Wrapping the yarn around the design adds texture, symbolizing the layers of pain and healing involved in the recovery process.



For the wings, I crafted them from bubble wrap, singed the edges, and spray-painted them black. The burning illustrates the fragility of love, and the black paint represents mourning and loss. Shaping the wings with wire signifies the effort to maintain strength and coherence in the midst of emotional turmoil.



I crunched up the fabric into a desired shape and coated it with resin, allowing it to harden. Once dry, I sprayed it with red and black paint, evoking the feeling of being stuck due to the rigid form, symbolizing the inability to move on from heartache.



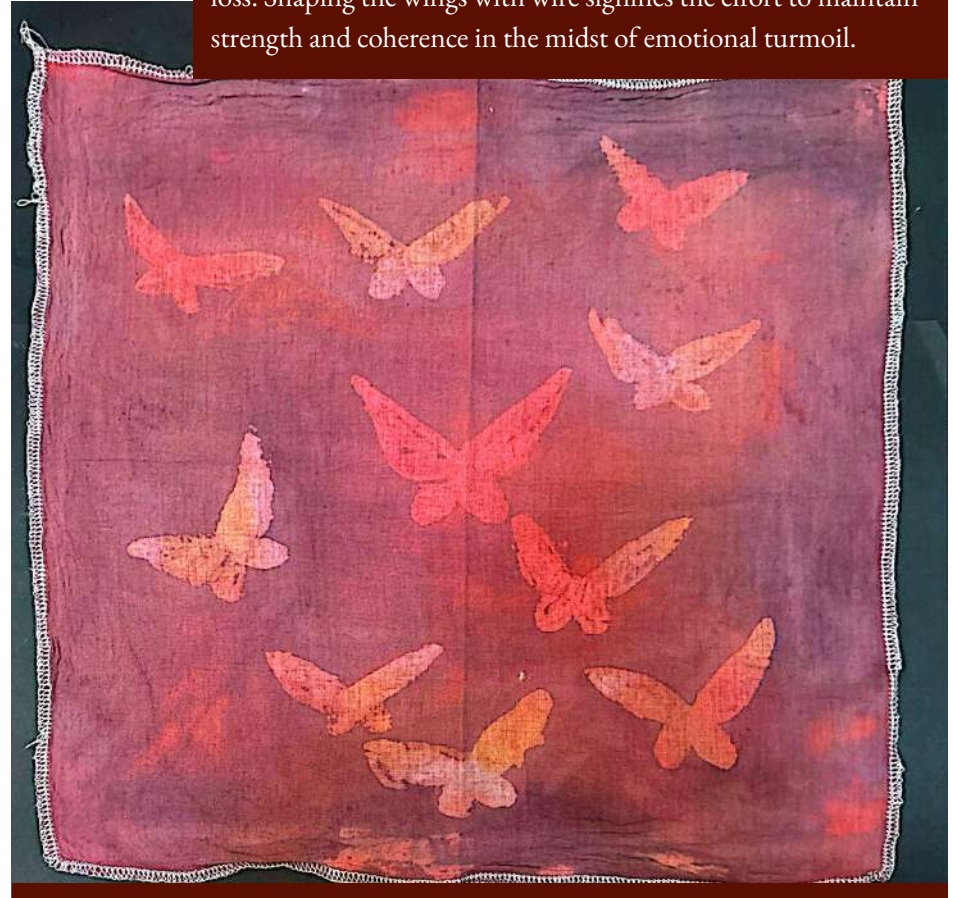
I utilized a heat gun to slowly make the fabric break apart, creating a sense of being broken down—a powerful representation of the emotional turmoil associated with heartbreak.



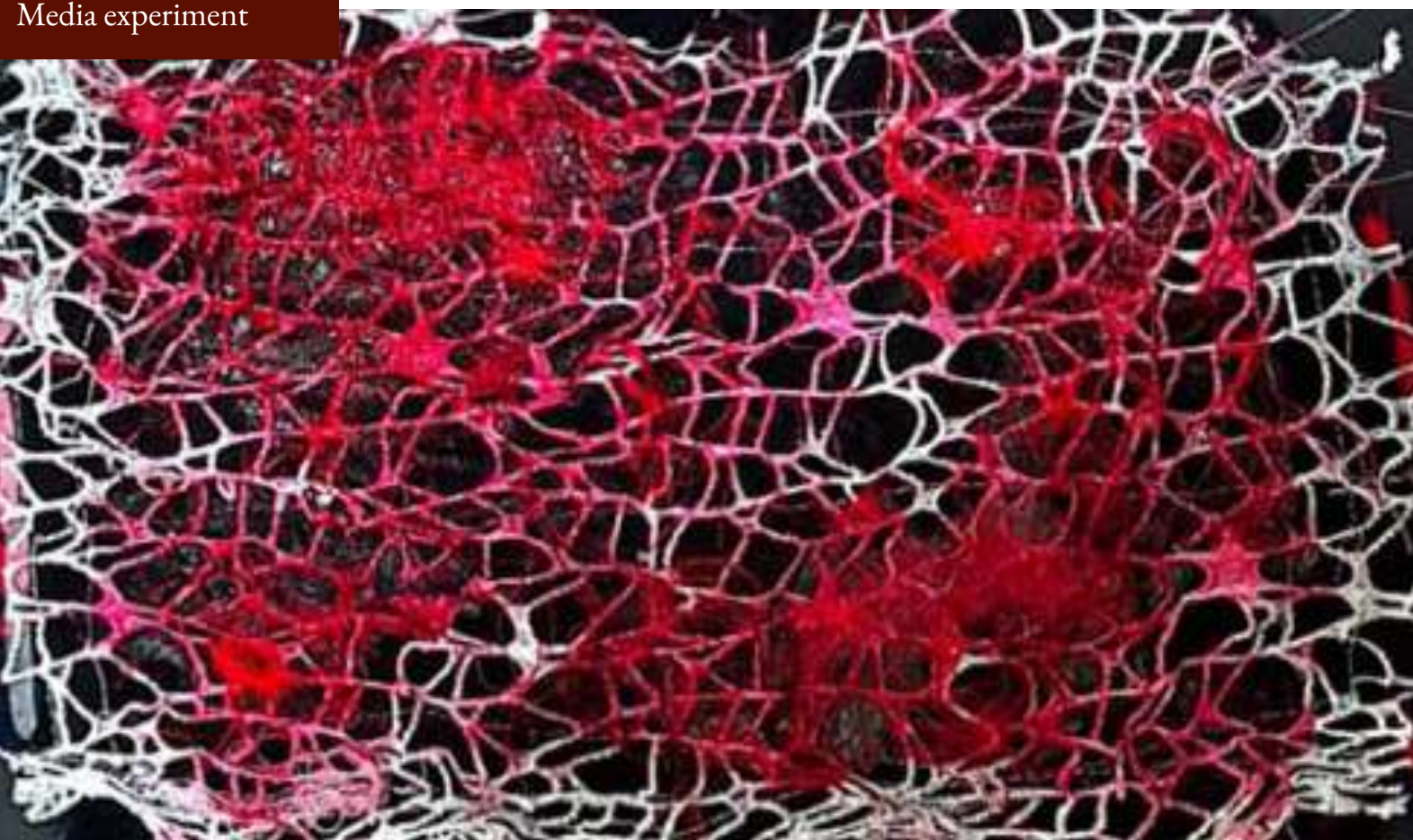
I carefully folded the fabric and applied a layer of resin, finishing it with slime to symbolize heartbreak. The structured folds represent the emotional barriers we often build after a breakup, while the slime captures the messy, complicated feelings that accompany such experiences.



On polyester fabric, I sketched a butterfly shape and coated it with wax before dyeing it red. The red signifies the intense emotions associated with heartbreak, while the wax represents the protective barriers we create to shield ourselves from further pain. Melting the wax away at the end symbolizes the journey of letting go and moving forward from past hurt.



On linen fabric, I illustrated several butterflies, covering them in wax and using red and brown powdered dyes. The butterflies symbolize the complexity of emotions experienced during heartbreak, with red embodying love and brown reflecting sorrow. Melting the wax with hot water symbolizes the process of releasing past pain and allowing for emotional



I sewed black and red fabric together, layering it with a web-like material. To enhance the design, I mixed red dye, clear glue, and an activator (borax and water) and applied it over the fabric. This combination evokes a feeling of being trapped, unable to process the pain of heartbreak.



To symbolize physical pain from separation, I mixed glue and activator (borax and water) with black glue. I layered torn clothing on top and sprayed it with black spray paint. Additionally, I constructed a hand using packing peanuts, modeling it with glue. This representation speaks to the hurt of not being with the person you love.



I laid a layer of bubble wrap at the base, followed by a fabric layer sprayed with red and black paint. I combined black dye, clear glue, and activator (borax and water) and stretched the slime to create different holes. Lastly, I added red and black string to form varied textures, culminating in an uncomfortable feeling that reflects the turmoil of heartbreak.

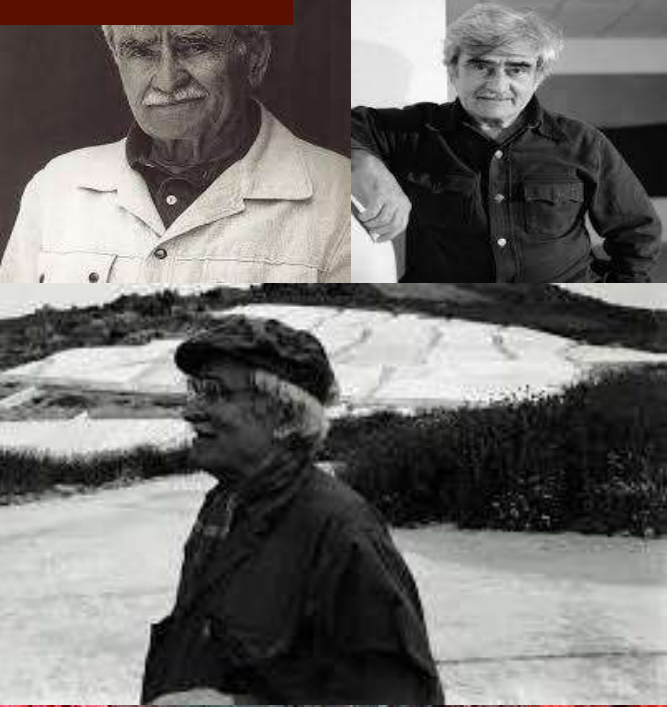


I employed the slashing technique using various fabrics, such as lace, mesh, and web-like materials to create depth and texture. First, I used a heat gun to burn the edges, symbolizing the emotional scars left from heartbreak. The combination of these delicate fabrics represents the fragility of love and the intricate layers of emotions that arise from loss. To top it all off, I added slime to the piece to further symbolize heartbreak—its gooey texture reflects the messy and tangled feelings that accompany the pain of a broken relationship.



I combined glue, activator (borax and water), and red dye, then mixed it with cotton to create a textural piece. This texture resembles a dead butterfly evaporating away, instilling an unease that reflects the fragility of love and the sorrow of loss.

Artist research 1



Alberto Burri *Rosso Plastica* (1915-1995) is a striking blend of American Abstract Expressionism and European art. Utilizing acrylic paste and glue on layered black fabric over a canvas board, the piece features a rich interplay of textures and colors, primarily in shades of red and black. The fluid, curvilinear lines and organic composition captivate the viewer, while various textures—smooth and rough—arise from crinkled cuts and charred areas, adding depth. The contrasting movements within the artwork create dynamic tension, and the harmonious colors enhance the visual experience, balancing the smooth and rough elements. This dark, eerie atmosphere is accentuated by uneven proportions and irregular patterns, resulting in a chaotic yet compelling composition that invites deeper contemplation.



Rosso Plastica M1, 1961 plastic, acrylic & combustion on canvas

Using acrylic paste and glue, the artist layered black fabric over a canvas board to create a rich interplay of textures and colours, primarily in shades of red and black. The fluid, curvilinear lines and organic composition captivate the viewer, while various textures—smooth and rough—arise from crinkled cuts and charred areas, adding depth. The contrasting movements within the artwork create dynamic tension, and the harmonious colours enhance the visual experience, balancing the smooth and rough elements. This dark, eerie atmosphere is accentuated by uneven proportions and irregular patterns, resulting in a chaotic yet compelling composition that invites deeper contemplation.



15 x 15.6 slime and acrylic paint on fabric



23 x 15 acrylic and spray paint on plastic bubble wrap

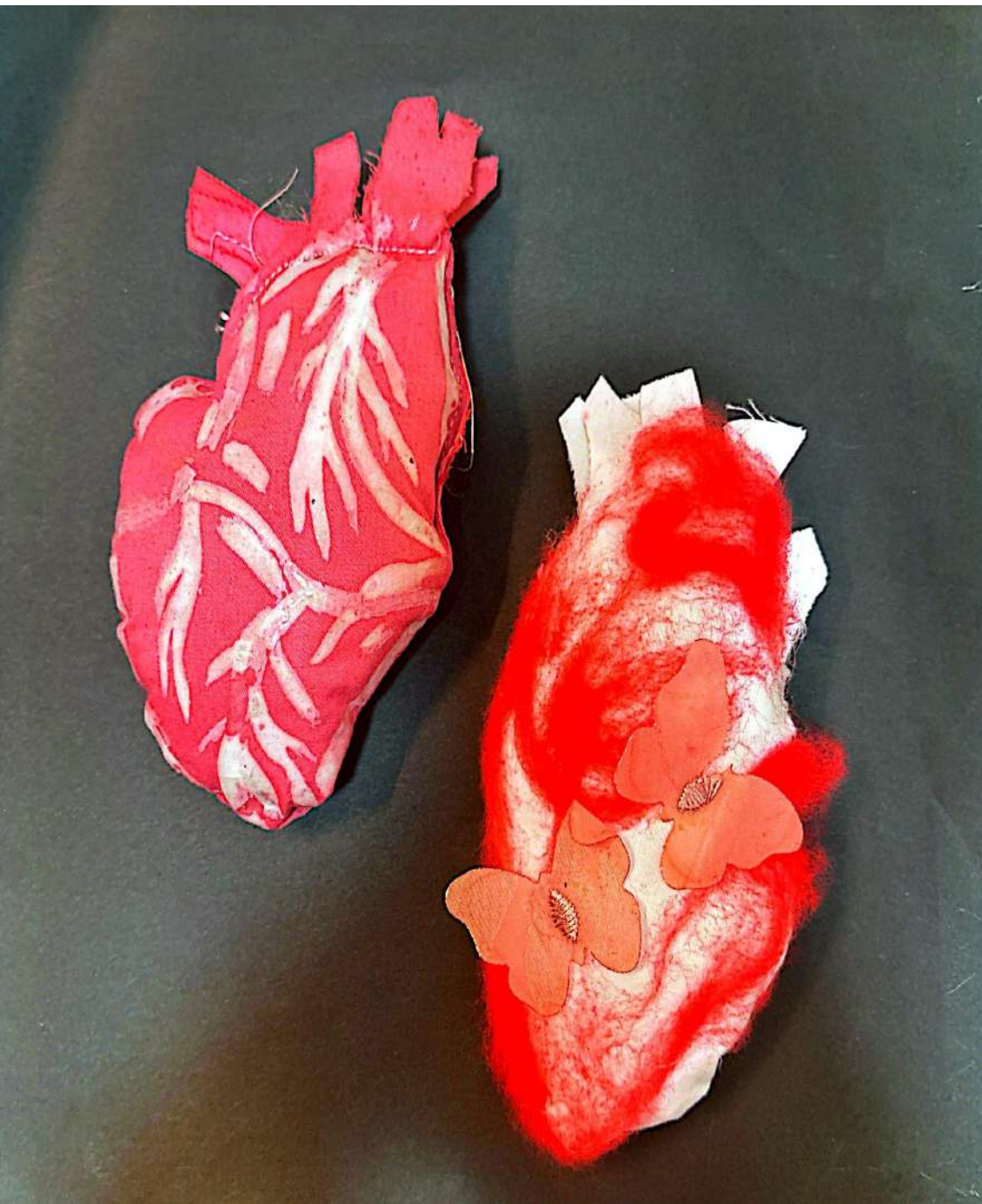
I create slime using both clear and opaque glue and have developed a unique paste that crackles as it dries. I then layer this on fabric, spray painting it with rich shades of red and black for a striking visual effect. This links back to Alberto Burri *Rosso Plastica* intricately weaves themes of heartbreak with the symbolism of the butterfly, suggesting transformation amidst emotional turmoil. The juxtaposition of rich reds against deep blacks creates a poignant visual narrative, where smooth and textured elements reflect the complexities of love lost. The fluid, organic lines evoke a sense of movement, embodying the emotional turbulence often associated with heartbreak. The butterfly, a symbol of rebirth, subtly resonates within the chaotic yet harmonious composition, inviting viewers to contemplate renewal after suffering. For future designs, exploring mixed media that incorporates ephemeral materials could further emphasize themes of fragility and resilience, while experimenting with light and shadow might enhance the emotional depth and interplay of textures seen in Burri's work.

Ema Shin, a Japanese-born artist of Korean descent, currently resides in Naarm/Melbourne. Her artistic practice examines themes of femininity, sexuality, identity, and womanhood through soft sculpture and tapestry. Utilizing a feminist lens, Shin addresses the historical absence of women in her culture and highlights these themes in her work. Her absent women are depicted through soft sculptures resembling human organs, intricately crafted from delicate fabric and adorned with beads. Since becoming involved with the Australian Tapestry Workshop in 2012, she has garnered numerous accolades, including the Kate Derum Award for Small Tapestries. Shin's art has been exhibited globally in venues across Lithuania, the USA, China, and Japan, showcasing her exploration of the connection between femininity and historical representation.



Elaborately Embellished Heart Sculptures (2022), mix media sculpture

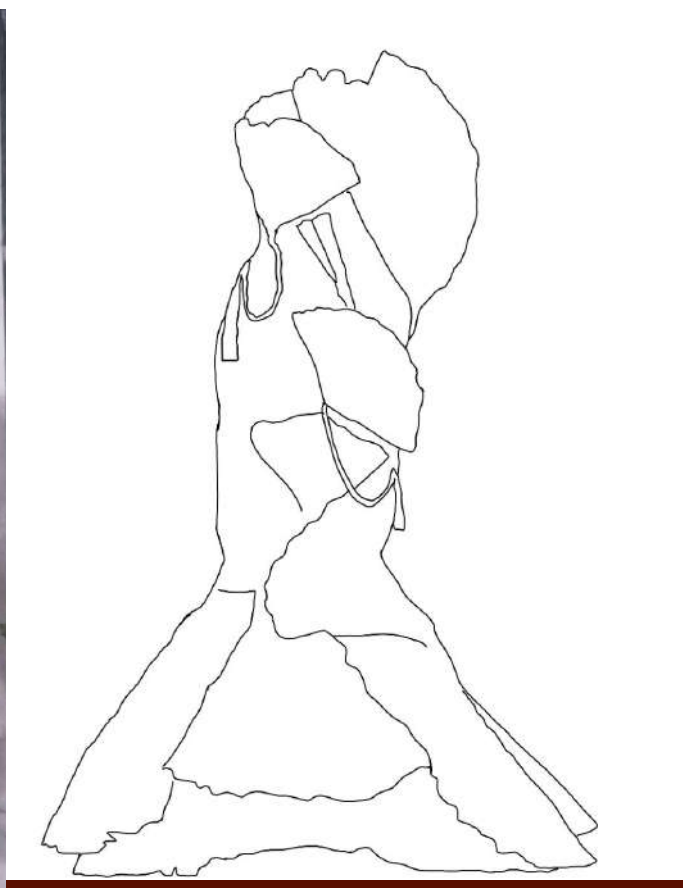
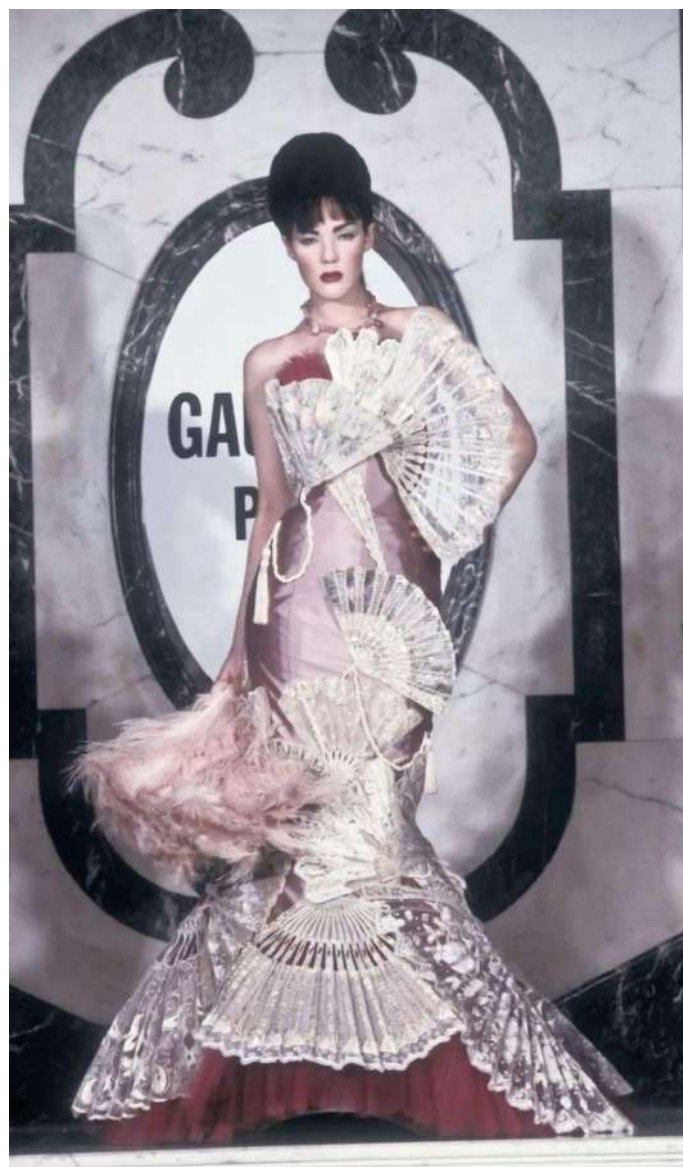
Ema Sin's *Elaborately Embellished Heart Sculptures (2022)* intricately explores form and texture through a meticulously crafted heart that symbolizes both vulnerability and strength. Surrounding this motif, Sin employs techniques like felting, crocheting, beading, and embroidery, creating a vibrant color palette that celebrates her cultural heritage. The sculpture's wavy and linear forms echo the heart's complex anatomy, while the rich layering and mixed media establish a dynamic tension between softness and rigidity. This three-dimensional piece invites tactile exploration, with meticulous detail emphasizing veins and ventricles, reflecting a deep understanding of organic form. The rhythmic flow of materials suggests a subtle pulse, establishing a poignant connection between the artwork and the essence of emotion and vitality.



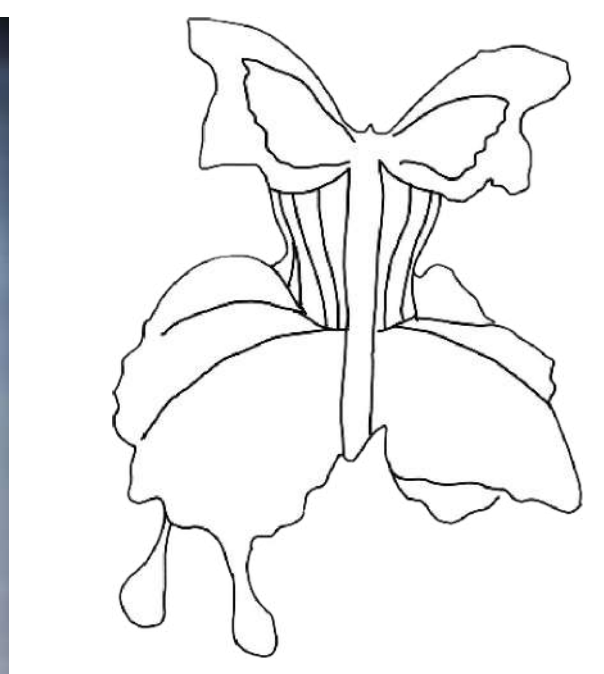
I began by sketching the outline of a heart, both front and back, using fabric to shape the material. Then, I applied wax to trace the lines and dyed it a vibrant scarlet red. After allowing it to dry for a day, I melted the wax off with hot water. Next, I sewed the outlines together, leaving an opening to stuff cotton inside, creating a plush heart. For an added touch, I cut butterflies out of fabric and attached them on top. However, I found this experiment unsatisfying because the heart turned out rather unrealistic, so I decided to use clay and paint to reshape it. Ema Sin's *Elaborately Embellished Heart Sculptures* powerfully captures the theme of heartbreak while incorporating the butterfly as a symbol of transformation and resilience. The heart, skillfully crafted with a variety of textures and colors, represents the fragility of emotions, while the vibrant tones celebrate the beauty inherent in vulnerability. The butterfly, a symbol of rebirth, mirrors the heart's journey through pain toward healing. Sin's intricate patterns and layered materials deepen this narrative, suggesting that strength and renewal can emerge from heartbreak. The organic forms and careful details reflect the complexities of human experience, encouraging viewers to contemplate their own emotional journeys and the profound connections between love, loss, and the transformative nature of art.



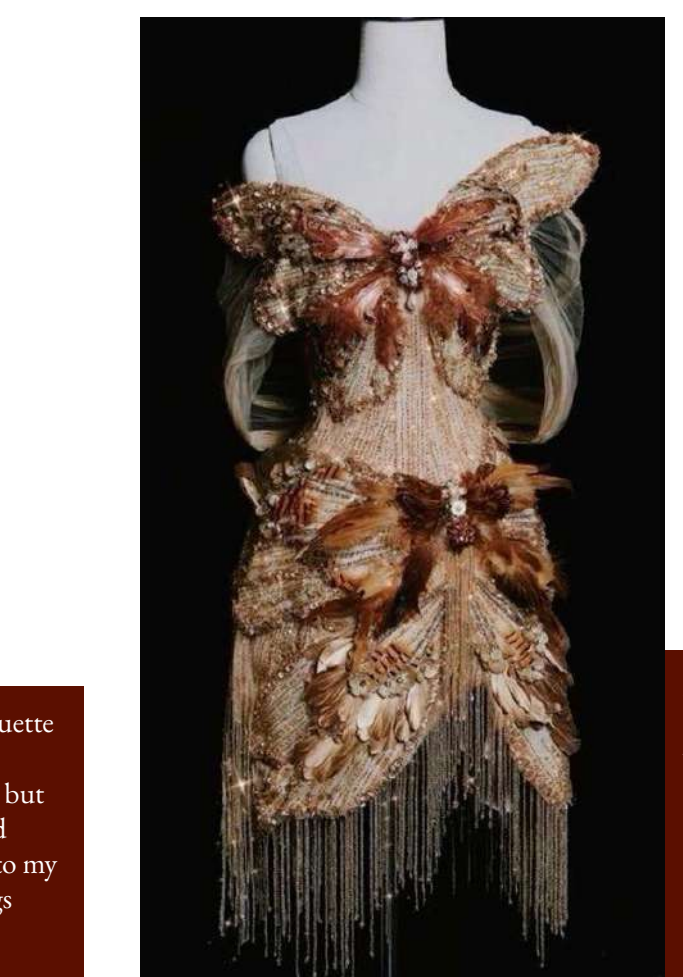
This stunning silhouette evokes the delicate and intricate shape of a butterfly. I chose this design for its sculptural quality, which emphasizes elegant curves and sharp angles, creating a striking visual impact that mirrors the fragile beauty of butterfly wings.



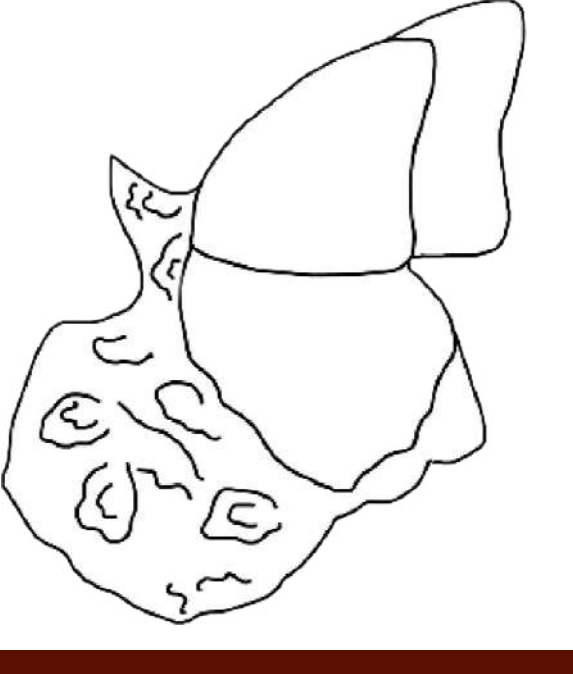
I am drawn to this design for its unique fan-shaped elements that introduce texture and depth to the garment. The interplay of these shapes creates visual intrigue, while the meticulously crafted pleats convey a tailored appearance that elevates the overall silhouette. This combination of textures not only enhances the design's dimension but also adds a layer of refinement.



This design captivates me due to its innovative silhouette that entirely embodies the shape of a butterfly. The corset's wings not only enhance the overall aesthetic but also contribute to a dynamic sense of movement and femininity. I envision incorporating a deep V-cut into my design, echoing the graceful curves of butterfly wings while adding a touch of allure and sophistication.



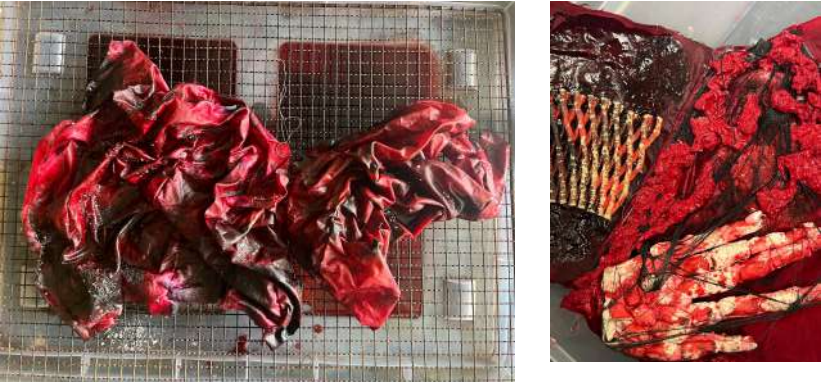
I'm captivated by the tilted butterfly in my design, which adds a sense of movement and vitality to the silhouette. The unevenness of the skirt further represents the heart aspect, symbolizing the complexity of emotions. This combination enhances the aesthetic and creates a deeper narrative, reflecting both grace and sentiment in my work.



This design I envisioned combines iconic imagery from both butterflies and hearts, resulting in a silhouette that reflects both grace and emotion. The asymmetrical forms reminiscent of butterfly wings, along with the elegant ruching on the dress, create a sense of fluidity and romance. This harmonious blend of elements inspires me to explore the connection between nature and sentiment in my own creations.



For the top, I pinned fabric to the bodice to form a desire shape



For the top, I pinned fabric to a dummy, traced and cut satin, dyed it scarlet, and added slime for texture. I made a skeleton hand from packing peanuts and clay, spray-painted red, and decorated with shredded fabric and chains. For the bottom, I traced and sewed polyester, used a salt dye method, and added tulle. Finally, I decorated with plastic butterflies and broken CDs.

I created wing stencils using bubble wrap for texture, cutting each wing into four sections and spraying them black. I added structural support with metal wire and burned the edges for contrast, totaling eight wings per side.



What I like

I appreciate the silhouette design and the adept use of various textures, such as slime and ragged fabrics, which add a distinctive depth to the work. The intricate wing details evoke a feeling of unease, amplifying the emotional impact.

What I disliked

However, I believe that the current design does not fully capture my theme of heartbreak. It is missing symbolic elements that resonate with this theme, like hearts and butterflies. I would love to see more of these symbols incorporated to create a more robust narrative.

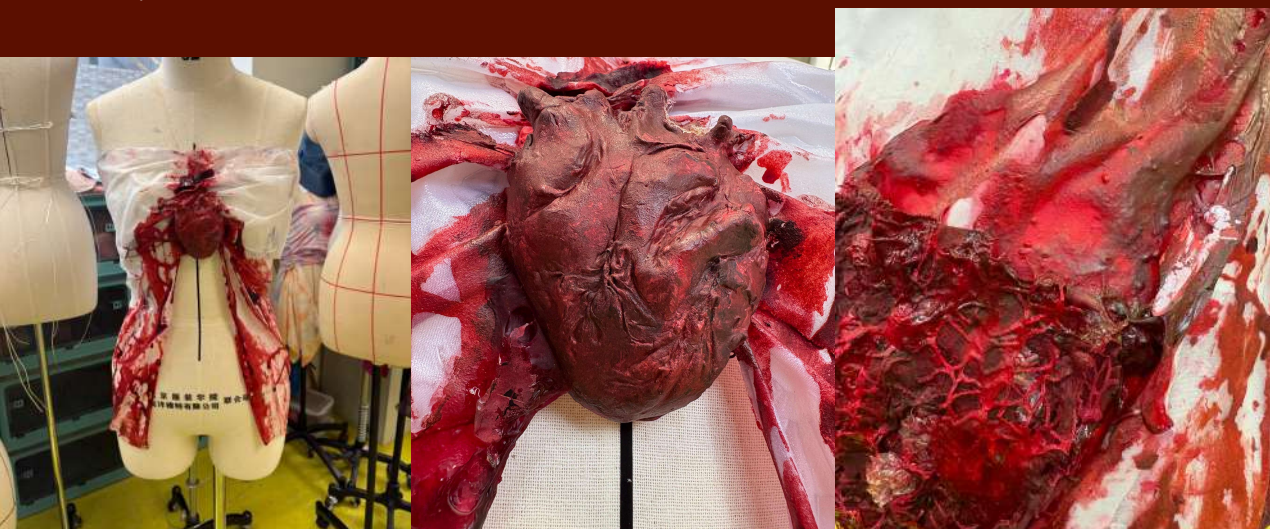
What can I improve on

Additionally, I would like to explore a broader array of dyeing techniques to demonstrate greater versatility in the textures and colors. This would facilitate a richer visual representation of the complex emotions tied to heartbreak.

Mock up 2 and Design refinement



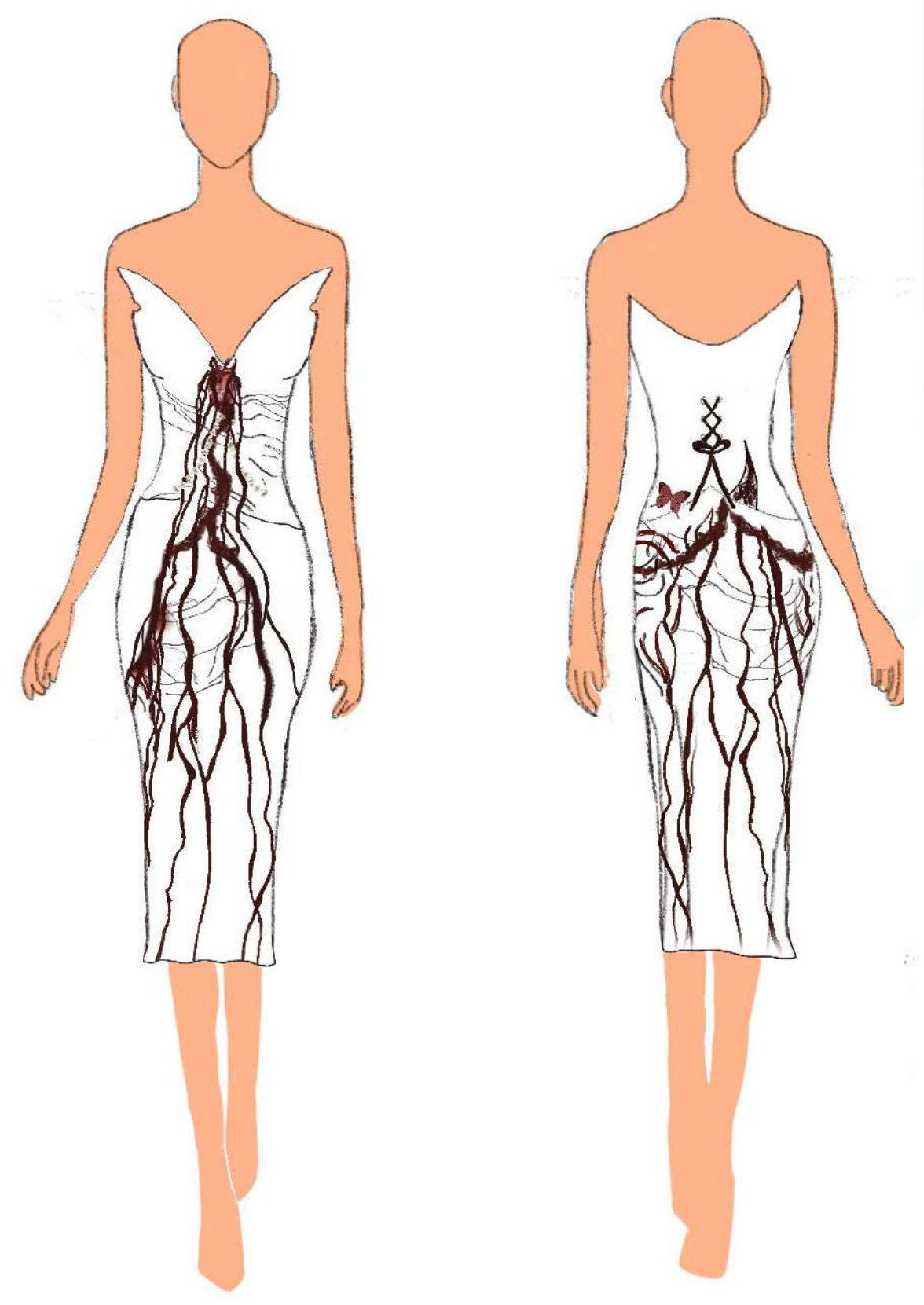
In my mock up, I had experiment with resin, I aimed to create a heart-themed piece that embodies love and emotion. I began by pinning the shape of the heart that resonated with me, ensuring it was a representation of warmth and affection. Once I was satisfied with the design, I wrapped the dummy in plastic wrap to prepare it for the resin application. I mixed equal parts of the resin and poured it carefully over the shape, allowing it to dry. The process of mixing and pouring the resin was symbolic of blending different aspects of love, encapsulating the essence of my theme.



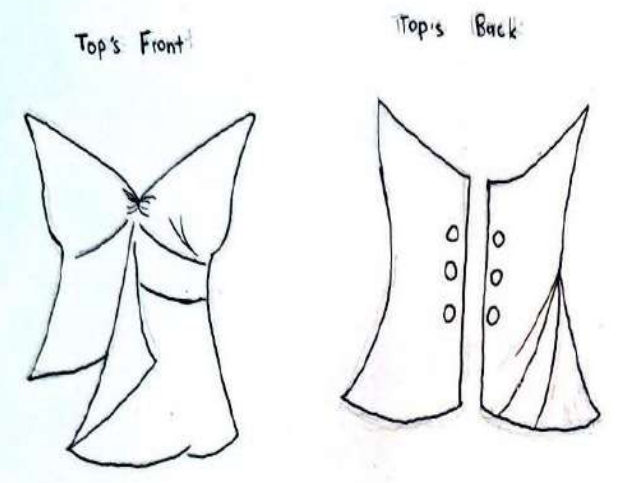
To complete my heart-themed artwork, I reused a skirt from my previous mock as the base. This recycled element signifies the continuity of love across different stages of life. I adorned the top with fake butterflies, spray-painting them black and red. The butterflies symbolize transformation and hope, but the chosen colors give them a bold presence, complementing the heart's representation. Overall, this piece embodies the journey of love through its unique materials and thoughtful design choices, inviting viewers to reflect on their own experiences of the heart.



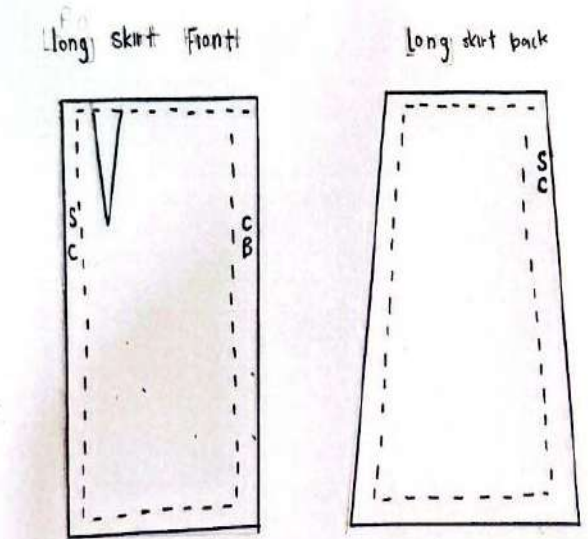
enhanced the visual appeal by adding red clear slime around the edges. This vibrant color not only adds depth but also represents passion, a core element of love. Allowing the slime to dry fully was essential to maintain the integrity of the design as I moved on to shaping the heart more distinctly with clay. The clay formed a perfect heart shape that stands as a testament to the central theme of my project, reflecting the beauty and fragility of love.



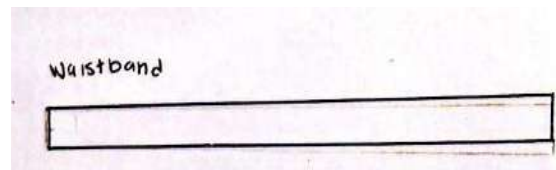
For the front, I wanted to represent the theme of heartbreak. I used resin for the top to illustrate how trapped a person can feel in this state. By placing a clay heart in the centre as it bleeds through it to show a literal idea of it, I was also inspired by the movie 'Carrie' and the bloody dress she wears at the end. To show heartbreak full circle, I wanted to use slime to create blood pouring out and the pearls to symbolise the innocent slowly fading away. I used fabric manipulation to show layers of full blood-like texture, as well as the embroidered butterfly to emphasise the theme and the correlation to butterflies. Lastly, I used a corset to create the illusion of being tied up and the feeling of not being able to be free. For the dress, I kept it mid-length to show the process of a heartbreak and the realisation that it is finally over.



Top is made of resin
3 cm between each eyelets

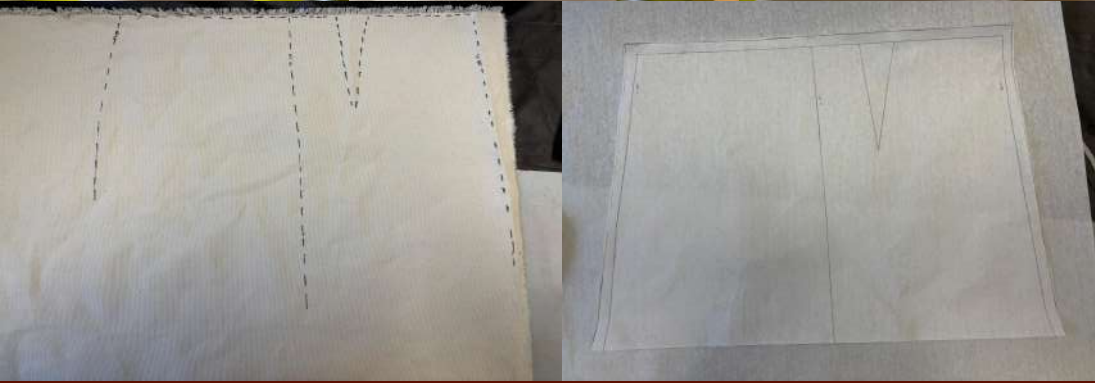


Length of the dress 51cm
Leave 1cm seam allowance on each side



Waistband of the dress 125cm (length) x 9cm (width)

Construction process



I also use the salt dye method. I bundled up both the fabric and lace to create a spatter of blood all across the dress.



First, I used fabric to shape the skirt I desired. I marked the centre back and side seam with a marker and transferred it onto tracing paper. Using its measurements, I ensured the length touched the ground and then cut the necessary fabric sizes. To add an element of elegance in contrast to the heart-shaped design, I used silk. This choice evoked the process of a heartbreak. I left a 1-inch seam and sewed everything together .



I shaped the heart using clay and coloured it with various shades of red. I then strung beads and sprayed paint it red to create the illusion of blood. Additionally, I used dyed lace fabric and heated it with a heat gun, causing the fabric to tear and resemble heartbreak and sew that on the dress.

Next, I used resin, similar to my mock 2, to create the desired shape. I wanted it to resemble a butterfly on top. I pinned the pieces together and poured the resin, allowing it to dry.

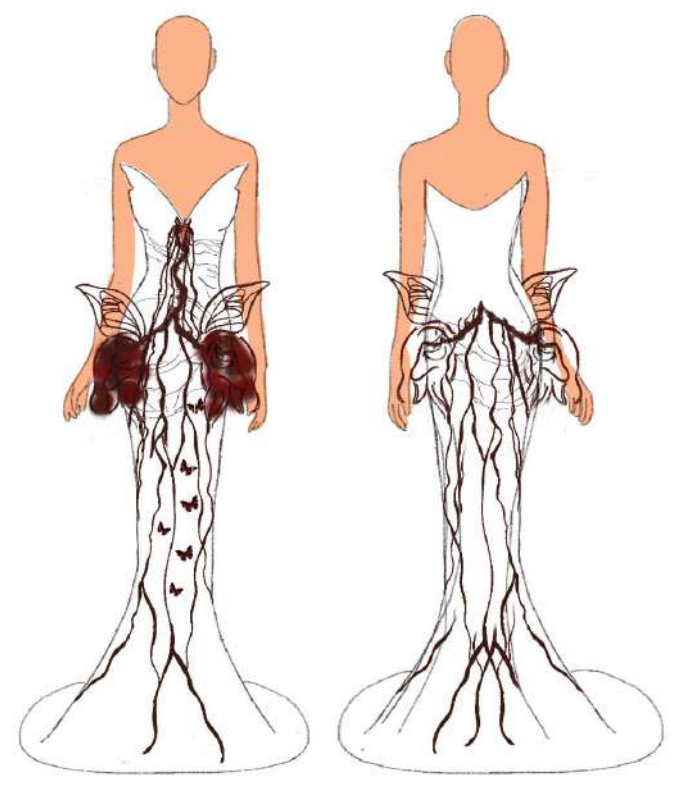


I then utilised fabric manipulation to create a slit to insert. I used bubble wrap, web-like fabric, and lace sewn together and applied a layer of red clear slim together.

I then utilised fabric manipulation to create a slit to insert. I used bubble wrap, web-like fabric, and lace sewn together and applied a layer of red clear slim together.



Finally, I cut holes in the back and nailed in the ring to create a corset. I dyed the necessary fabrics using methods like salt dye to achieve my final piece.



The design consistent of a train, the blood pouring down the dress, and the different components of the heart and butterfly. I like the butterfly silhouette and the pouring heart, reminiscent of Carrie



The design has a black and red colour scheme, it has components like the skeleton hands and the beaded embroidery around the waist. I like the detailing of the beaded dress.



The dress is made up of the slime and fabric manipulation. I really like the boning of the corset and the shape of the butterfly placed in the ends of the dress.



This is a two piece tie dye red and black. I like the length of the skirt perfectly complementing the top



My project focuses on the theme of heartbreak. It is symbolized by the use of butterflies, which often represent transformation and fragility. I have chosen materials like fabric, paints and clay to create a visually meaningful piece that captures the emotional weight of loss. The final artwork expresses this theme by combining the delicate, fragile nature of butterflies with the strong symbolism of a heart and blood-stained dress, embodying the pain and beauty often intertwined in a broken heart.



Over the course of the project, my work continued to evolve as I experimented with different techniques like sculpting and resin. Refining my approach to effectively convey my message. My skills in composition and color application had improved significantly, allowing me to create a more cohesive and impactful body of work. In the future, I would consider incorporating more textures to enhance the emotional depth of the work, as I believe this can send an even bigger message to the audience. The materials I used, particularly the fabric and color, were successful in evoking the intended feelings as they added additional layers of meaning to the work. Ultimately, my aim was to convey the complexity of heartbreak, and I believe I succeeded in evoking a strong emotional response from the viewer.



I was able to follow the timeline for creating my final artwork, but I wish I had finalized my decisions sooner, as this would have allowed me to develop my work further. One of the main challenges I faced was deciding which techniques and designs to use, which made the creative process feel somewhat overwhelming at times. Through this experience, I learned the importance of clarity in my vision and the value of early decision-making to enhance the depth of my work. I also discovered that experimenting with different techniques can lead to unexpected results, enriching the final piece. Overall, these challenges have taught me resilience and adaptability, skills that I will carry forward into future projects.

