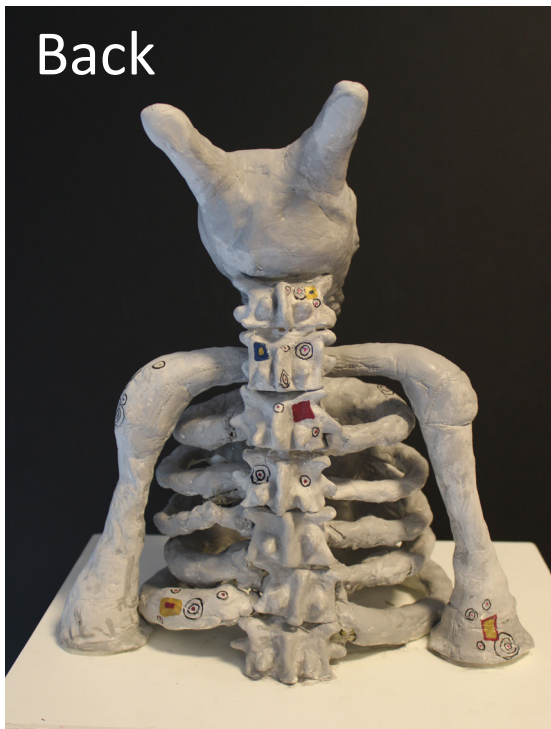


# Final Piece



Front



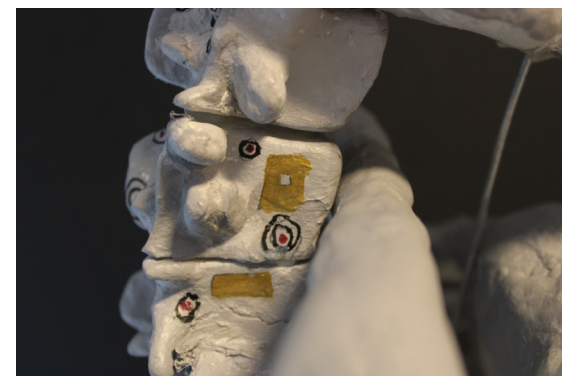
Back



Profil



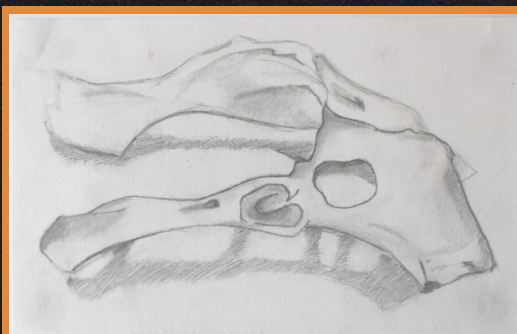
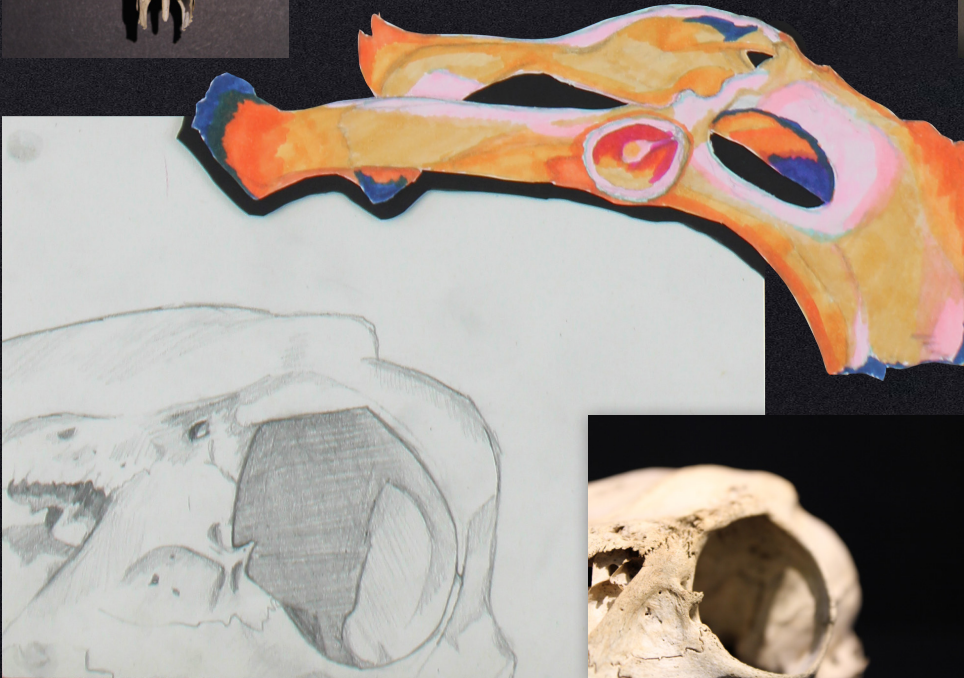
Details of the painting



P  
E  
R  
C  
E  
P  
T  
I  
O  
N  
S  
  
O  
F  
  
D  
E  
A  
T  
H

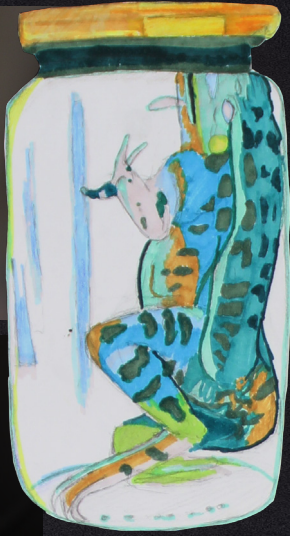


Death is unreliable. It is something that we cannot prevent, however we know it's going to happen. It's truly something unwished for but it's inevitability makes it fascinating. Is this eternal rest really as bad as some of us perceive it to be? Or is it knowing its presence, something that makes our lives worth living? These are a few of the questions that have prompted me to start investigating this topic. Death is something everyone must encounter and I also have had experience with. The idea of having a topic



which everyone can relate to, seems to me as an important factor in my art. On the first two boards, I have collected a few of my primary sources ranging from photography and sketches to colourful drawings.





My aim was to make it look like they were standing on a desk or a shelf, somewhere old and kind of spooky looking, to resemble the idea of how death isn't the end of things as time will always pass. At the top of my board is my attempt at using a different medium to recreate one of the images of the preserved frog. To make the dead preserved Frog look more lively I decided to use colours that are warm, bright and leave overall a joyous impression. I liked theorising that if only you can cover the cold harsh colours of death, it would seem more appealing and less sombre

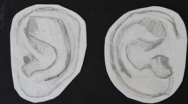


This page reflects another photoshoot that I made, in which I experimented with composition and the zoom function on the camera. This time in the centre of all: preserved animals. I wanted to get better acquainted with the camera and its zoom feature, and when I heard the science department had a collection of preserved animals, I thought it would be interesting to use them to practise this skill. After setting it up in a few different ways, I realised that I could get really cool shots, if the light came from behind. It allowed the animals to look like they were glowing and I liked the idea of incorporating the perception that death isn't something disgusting like a slimy frog, but rather something beautiful like a glowing figure. I really enjoyed the way the jar stood alone with the light shining through it from behind, but I also found it interesting to experiment with having the collection of preserved animals all standing together.



This project focused on the topic of surrealism. I created the sculpture by using two different surrealism techniques: transformation and dislocation. While planning this piece, I was drawing a bunch of sketches of random objects around me. Somehow I ended up drawing the skull of an animal which I found lying around in the art room. Upon deciding what the final product should look like, I kept coming back to that sketch which had additional human ears drawn on it and I just knew I needed to use it. The sculpting part was probably my favourite as I really enjoyed forming my creation. I used old newspapers and soft aluminium foil which allowed me to create the base shape for my sculpture. A layer of clay on top and some details later, I was left with an animal skull-like looking object (apart from the obvious edition of human ears). Lastly, I coated it with some acrylic paint and attempted my best at painting shadows. Finally, I decided to create a sketch of the final product (seen below) to complete this small project.

I believe that in my later pieces it would be cool if I integrated some more surrealism to explore the idea of there being more to death than the eye can see.



During some further investigation of my chosen topic, I stumbled across a beautiful artwork which I later found out goes by the name 'The Kiss'. The Artist, Gustav Klimt, is well known for his participation in the Vienna Secession and for the controversies his artworks caused due to their pornographic depictions. Klimt produced a number of popular pieces, many of which came from what was known as his 'golden-phase' in which gold leaf was used in his art pieces. When looking at his art I tend to look less at the centrepiece of the painting and rather at the medium that he chose to use. What I find most striking is his ability to integrate a wide variety of patterns and textures ranging from echo-like rings to gold-leaf, all of which allow his pieces to glow. The Idea of creating a piece of Art inspired by his, appealed to me as I thought It could be cool to combine my topic with his interesting patterns and colour choices. In the end, I created two artist inspired pieces, each influenced by one of his pieces ('The kiss' and 'Death and life').



# Visit to the Kunsthalle (art museum of Bremen)

This board is dedicated to the pictures and sketches I made at our trip to the Kunsthalle. Here we aimed to find more art and artists that inspire us. The research I made was divided into two topics: artworks made without paint, and paintings which I felt inspired by. (photo from the catalogue)

What I really liked about this piece, was the media used.

As simple as it seems to have nails on a board, it can create amazing artworks and it may be interesting to dive into this medium and experiment with it. I really enjoy the effect it has on the eye and if I were to attempt something like this, I could even use coloured string and suspend it between the nails.



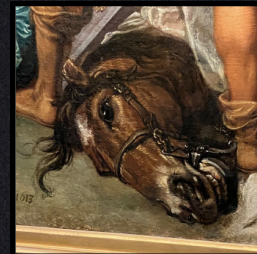
Loves Lasts Forever, 1997

Four Taxidermied animals

Acquired by the Free Hanseatic City of Bremen with the help of the Karin and Uwe Hollweg Foundation, 1998 (my own photos)

This Artwork was right in lane of my topic and immediately drew my interest upon entering the museum.

It shows the skeleton of four animals (die Bremer stadtmusikanten- a very important part of the bremer culture) standing on top of each other. The idea that sparked in me was that I could try different compositions of the objects in my piece.



Pieter Lastman, The Battle of Constantine and Maxentius, 1613

Oil on Canvas

Like all wars, death has its place. This painting shows a battle between two settlements who represent different religions. I like how it doesn't only show the death of our humanity but those of the animals who have been pulled into war. Death is something that occurs naturally, but certain occurrences such as war, are actually preventable.

Furthermore, I really like the fuzzy texture the painting appears to have.



Old Woman with a Goat, 1898

Bronze, dark brown and green patinated

Gift of the Association of Friends of the Kunsthalle, 1902

This piece caught my attention due to it being a sculpture rather than something simple like a painting. In it a old woman and a goat are represented. The goat looks like it is starving and reaching for the food in the woman's hand, but the woman is holding it just out of reach. I feel like this again shows the to a certain extent control humans have over death.



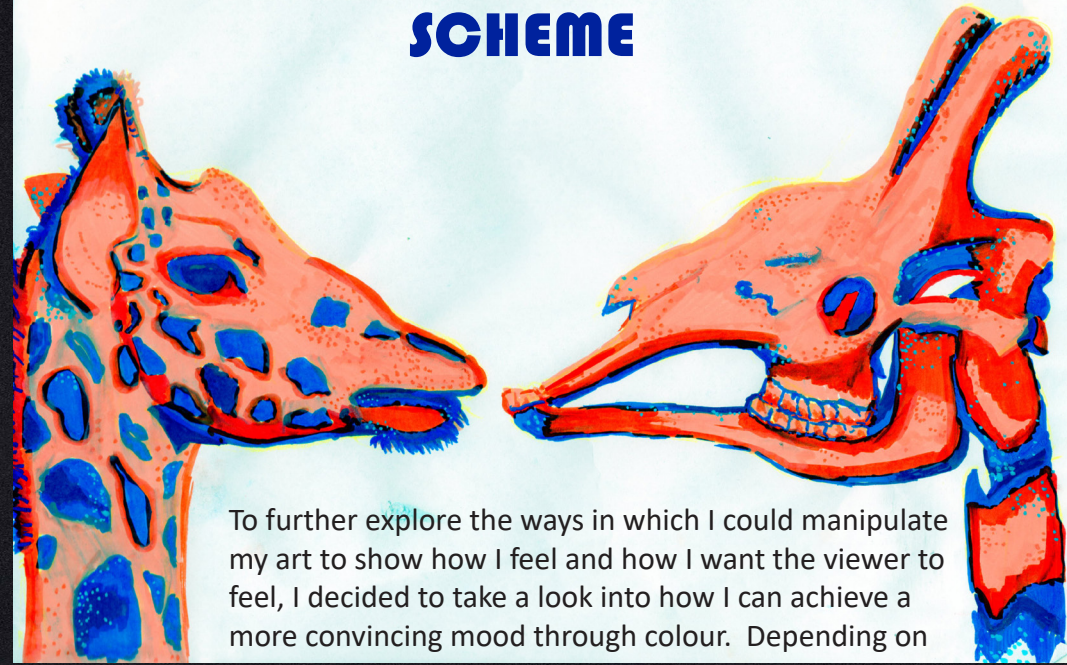
Here I was exploring positive and negative space to help better visualise what my final composition of my piece could look like.

As I have mainly focused my studies on different skeletons and bones, I think it would be best to reflect that newfound understanding in my final piece.

For the background I was thinking I could bring in some nature, to show that death is purely natural. Maybe I could paint a lot of poppies and have them be in the background to even represent the human influence on it, as poppies represent the fallen victims of war. The skull will be an animal skull to represent their side of death.



## COLOUR SCHEME



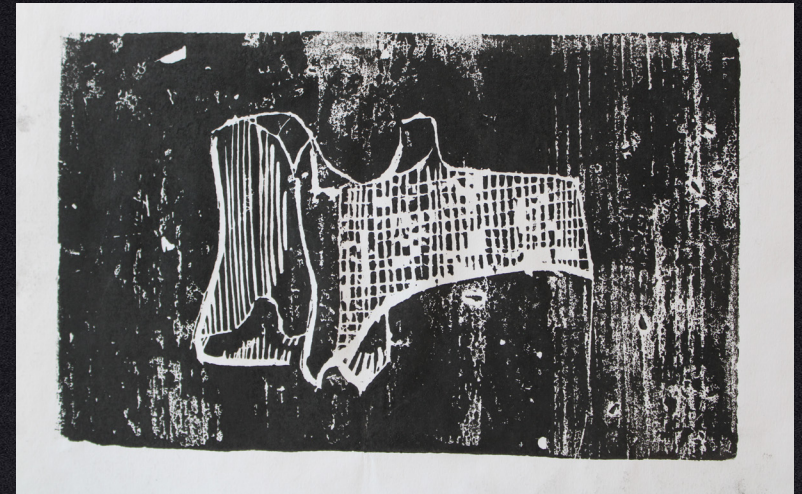
To further explore the ways in which I could manipulate my art to show how I feel and how I want the viewer to feel, I decided to take a look into how I can achieve a more convincing mood through colour. Depending on

which colours you choose and how you apply them in your art, you can evoke interesting emotions and make your art give off a certain mood. This is exactly what I wanted to achieve with mine. I wanted people to feel overwhelmed and impressed by the stark contrasting colours I used, and understand that even though 'Death' will have a never changing presence, it isn't all bad. It is powerful yet beautiful (due to its natural element) and is the reason why life has its meaning. Because without death there would be no life- there would be only being.



The use of complementary colours creates contrast and helps the details which I want stand out. I chose orange and blue because they are not only my favourite pair of complementary colours but also a pair with one warm toned colour and one cool toned colour.

# PATTERNS



In this phase, I was deciding what patterns and elements I would select from Klimt's work which I could later use in my final, was a lot easier to do than I expected. As I talked about before, when I was looking at the two art works 'The Kiss' and 'Life and Death' from Klimt, I loved to analyse the different shapes, patterns and colours he used. I really like the gold plating which he

used and so when I started creating my final piece, I used a gold marker to resemble this technique. We tried woodcut printing during the class. I chose to draw a bone, but I was not completely happy with the shade, so I tried to draw patterns on it to see how it would look like.

Before I chose the colours for my final, I decided to create a clay slab in which I could swatch the colours before deciding whether or not to use them in my final piece. In the end I went with a cool of white shade for the base, and magenta, navy blue, black, silver and gold for all the small details of the patterns.

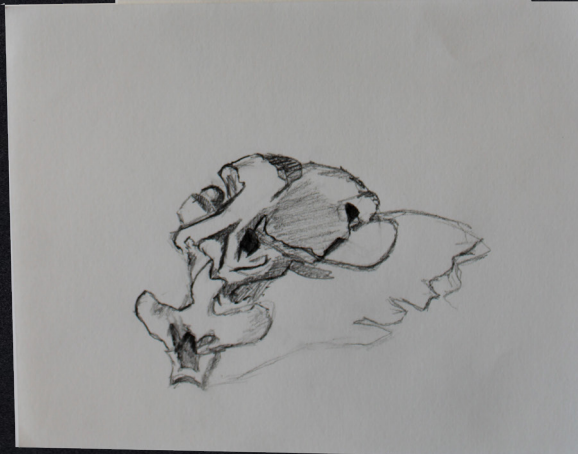
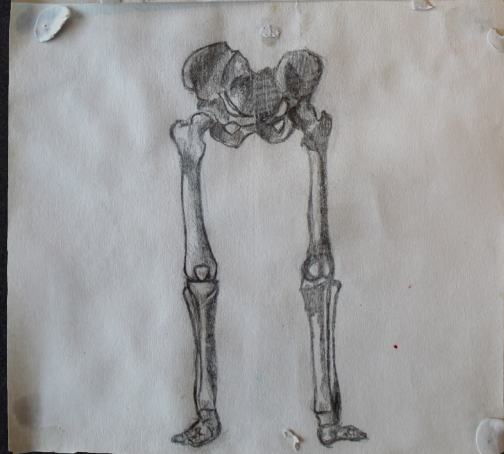
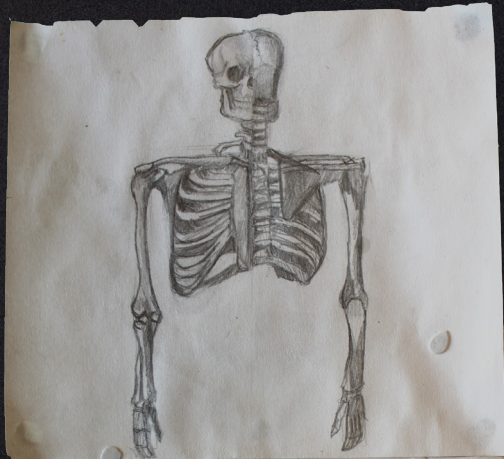


The final piece

For my final piece, I plan on creating a sculpture out of air drying clay, newspaper, chicken wire, and thick wire. To create my piece, I am going to make every bone separately so when it comes to assembling it, I will have an easier time and I can ensure that it is anatomically correct.

The final piece is inspired by many different concepts and techniques which I have accumulated over the period of working on my IGCSE coursework.

A trip to the Kunsthalle Bremen (an art museum here in Bremen) allowed for a discovery of an artwork which would later inspire me to create my final piece. The artwork 'Love Lasts Forever' shows the skeleton of four animals (A donkey, a dog, a cat and a rooster.: die Bremer stadtmusikanten- a very important part of the bremer culture) standing on top of each other from biggest to smallest. Up until that point I had only been focusing on the skulls of animals, however this artwork inspired me to explore a bit more than just the head. In my planning of my final, I came up with the idea of incorporating a body to the head of my animal.



At this point in planning, I decided to incorporate one of my favourite topics to explore: surrealism. Instead of just adding a bit of an animal body to my animal skull, I decided to make it a human body. Furthermore, during a previous exploration of complementary colours, I used a giraffe skull as my subject, which I decided to incorporate the horns of in my final piece.

When it came to deciding the colours and design of my final, I wanted to incorporate one last thing which I had previously covered and found really beautiful. The artist, Gustav Klimt (who I explored during my developmental stages) used all sorts of different patterns and designs ranging from circles to blocks of colour, which I decided I needed to incorporate in my final. Furthermore he has beautiful gold accents in many of his pieces which make his art truly glow.

If I incorporate all of these Ideas into my final piece, I feel like I can achieve the themes I want to convey and the emotions I want to invoke.

