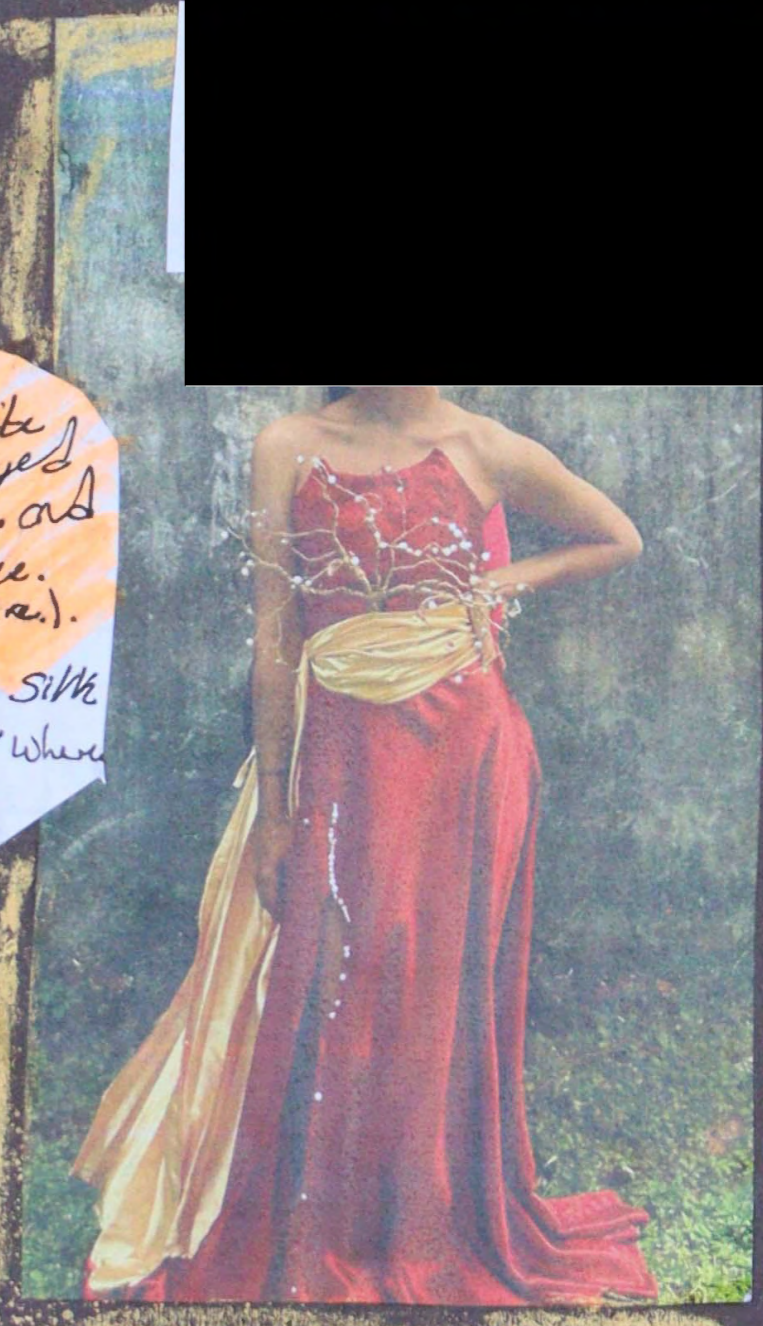




Back

The yellow markers represent Gold silk fabric.
 The red dots are red beads and the white dots are pearls and the black tree is sprayed Gold. The upper piece is a corset, with no sleeves and this piece was inspired by the Japanese blossom tree. (The tree on the dress is made from electrical copper wire).
 The middle piece around the waist area is a gold silk fabric that is wrapped around the waist covers where the corset and the lower dress meets.
 The fabric had scuffles and it was let loose on the left side.



Front

Final piece

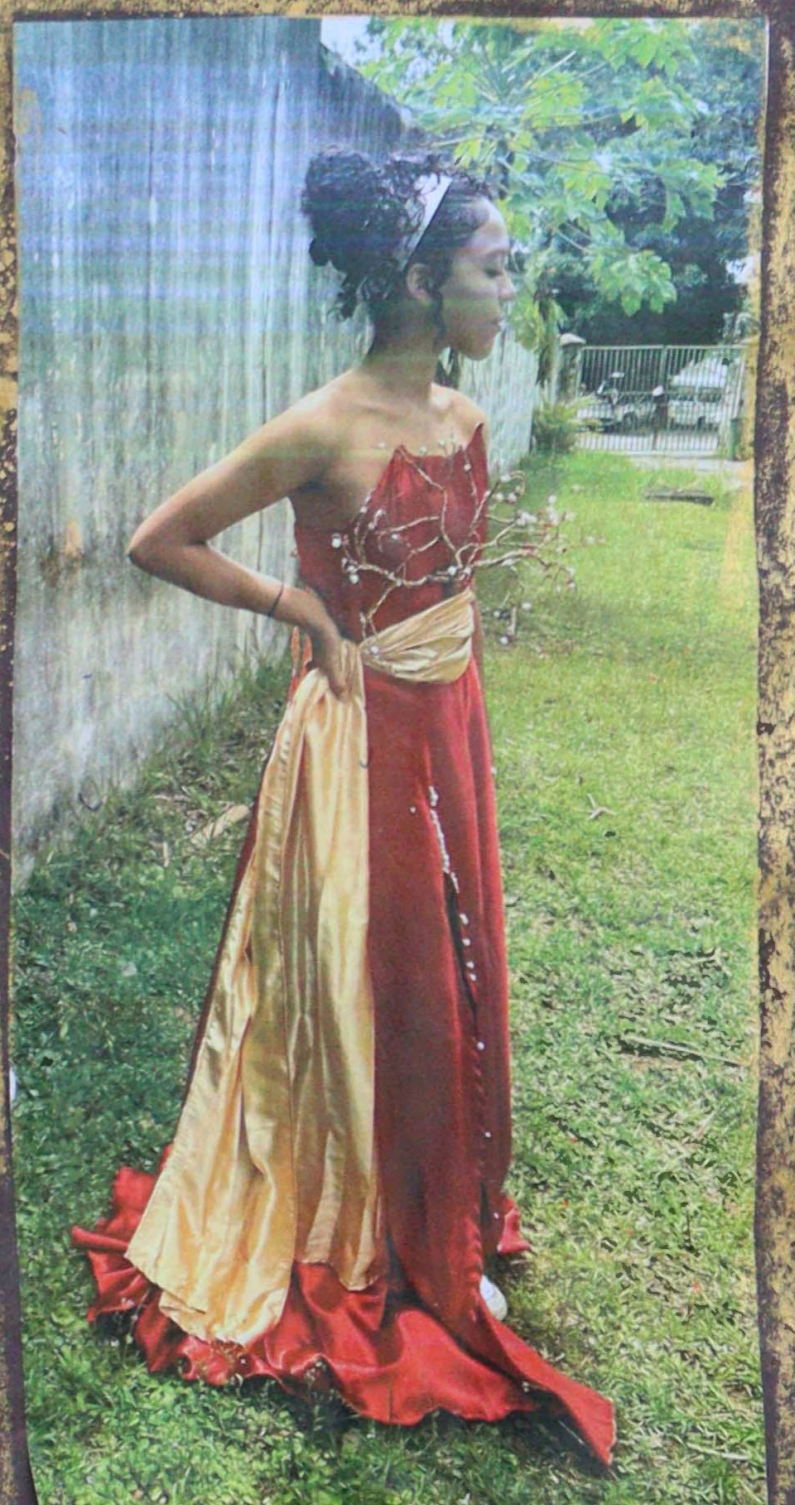
The whole dress is a burgundy silk fabric represented by the highlighter. The color burgundy represents sophistication, luxury, ambition and power all the things I wanted in this dress, also represents my ambition to go beyond the line of reality and imagination.

The back has a tied ribbon corset instead a zipper giving it the old but modern aesthetic.
 The gold also represents luxury, achievement and me achieving to create this dress.

In this short period of time just one day immersed to create this dress. It was inspired by Schie Perle design.

And it also has the golden petals at the back showing leaves from the cherry blossom.

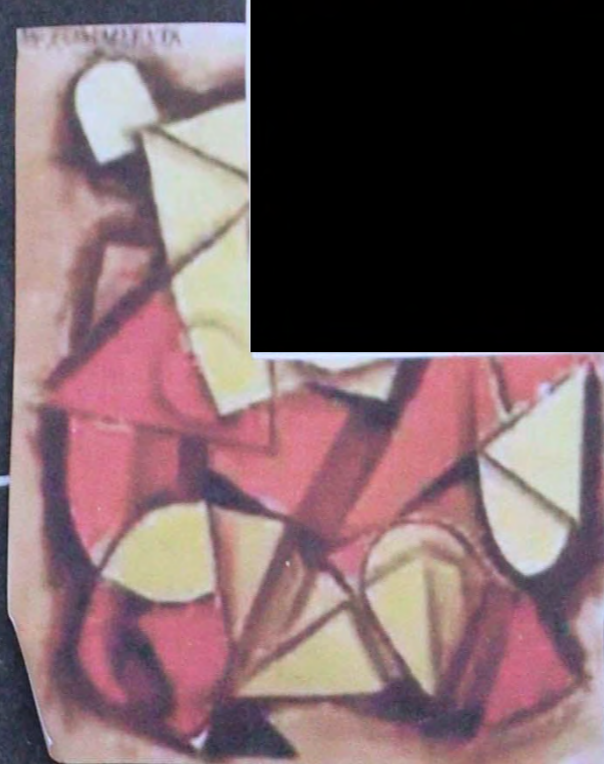
Side



Non-objective art.
Art that doesn't represent any recognizable object or figure.

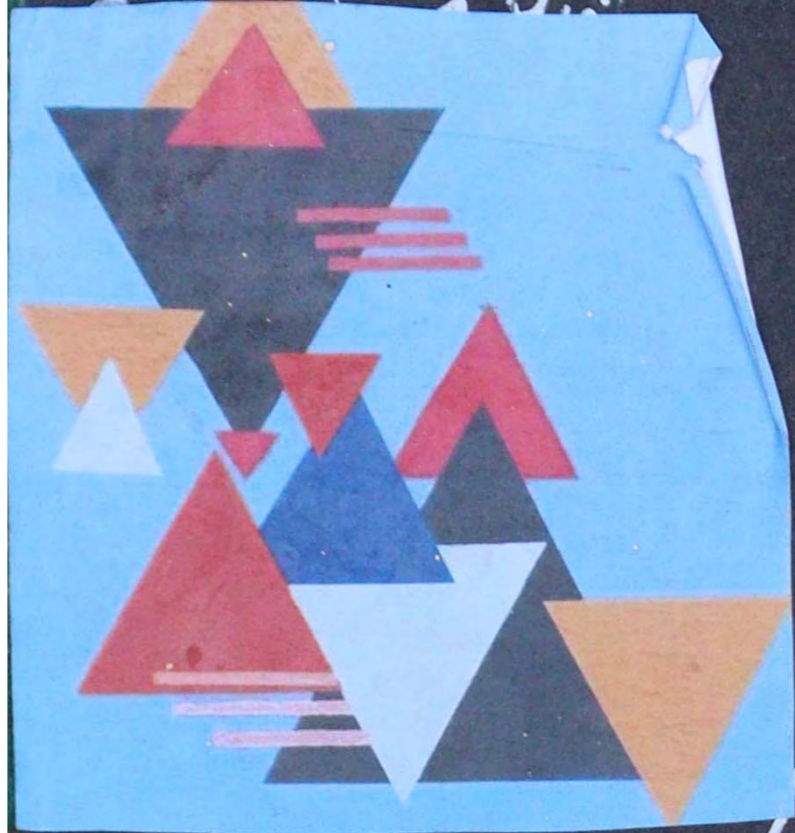
1

features:
• De Stijl
• Piet Mondrian
• Le Corbusier's forms



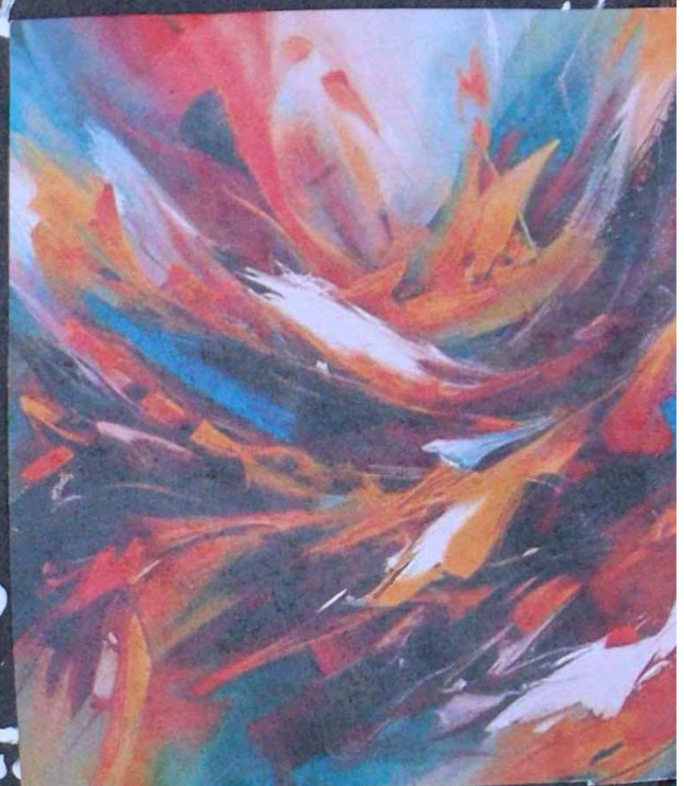
Abstract Expression
Key feature large scale
waves and emotional,
gestural brush strokes

Emotion
• Jackson Pollock
• Willem de Kooning
• Mark Rothko
• Franz Kline
• Arno Breker
• Anselm Kiefer



Abstract

is a non-objective art form
that emphasises visual elements
like color, shape, form and line
to create a composition, often without
recognised subject or realistic representation.



Fashion

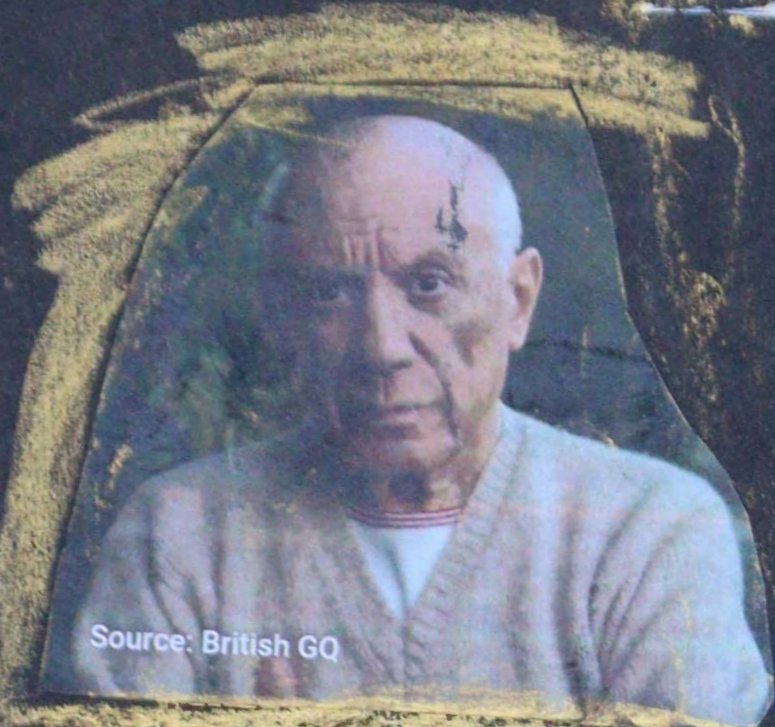
Abstract art, characterized by non-representational forms
and color has had a significant influence on fashion leading
to unique and eye-catching designs. using art movement such as
Cubism and expressionism, incorporating geometric patterns
and bold colors.

• Sohee Park



2

Pablo Picasso



Source: British GQ

Picasso was a Spanish painter, sculptor, and one of the most influential artists of the 20th century. He was born on **October 25, 1881**, in **Málaga, Spain**, and showed remarkable talent from a young age, encouraged by his father, who was also a painter and art teacher.

Picasso studied art formally in Barcelona and Madrid, but his unique style soon broke away from traditional techniques. By the age of 20, he had moved to **Paris**, then the center of the art world, where he began developing his own distinct artistic voice.

Picasso's work is often divided into different periods:

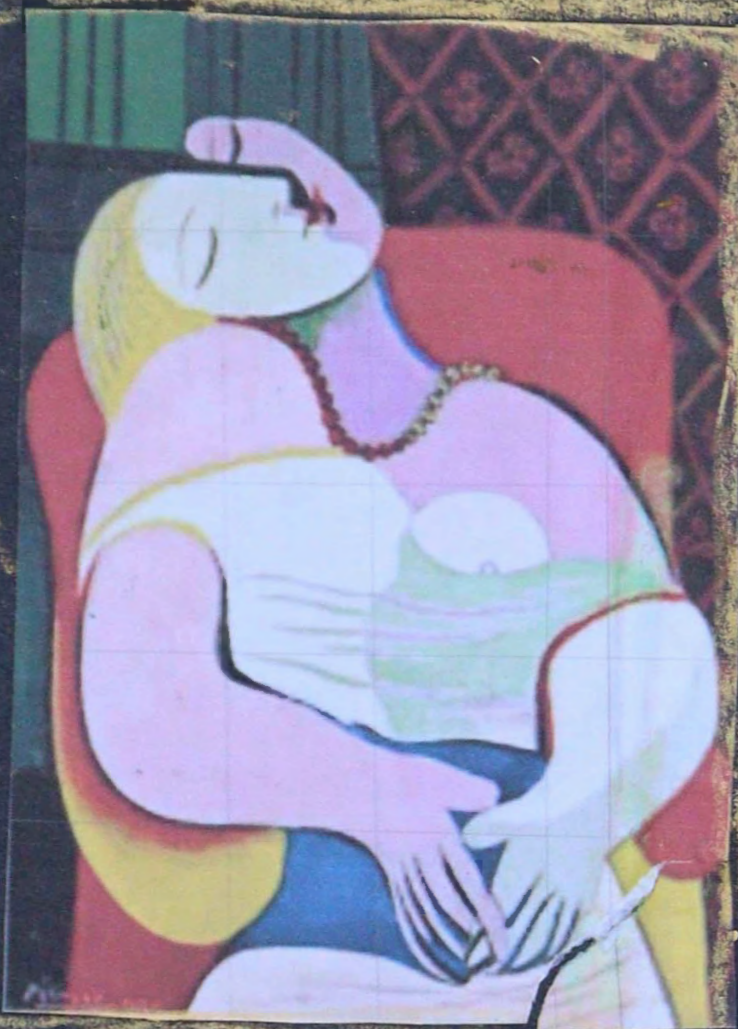
- Blue Period (1901–1904)
- Rose Period (1904–1906)
- African Period (1907–1909)
- Cubism (1909–1919)

Picasso died on **April 8, 1973**, in **Mougins, France**, at the age of 91. He left behind more than **20,000 works**, including paintings, drawings, sculptures, ceramics, and prints.

He is considered one of the greatest and most versatile artists in history, and his influence can still be seen in contemporary art, design, and culture today.

His paintings are not the same type of art skill; it's mixed in different types of art movements such as cubism, African.

These attract my interest because it's not the same kind of artwork; it's in different forms and colors. Their 2-D and 3-D dimensional creations and his works are fascinating. He shows his emotion and expression in his artwork.



The process of creating both artworks were hard, firstly the color palette I did not managed to create the right color palette secondly - the shape and sizes it was not balanced and incorrect and lastly the work was untidy and not clear or on replica of the real copy.



3

Piet Mondrian



Biography

Piet Mondrian was a Dutch painter best known for being a pioneer of abstract art and a leading figure in the De Stijl movement. He was born on March 7, 1872, in Amersfoort, Netherlands, and his full name was Pieter Cornelis Mondriaan. He later in life he drops the 'a' in Mondriaan to show his break with the past

He grew up in a strict Calvinist household and at an early stage showed interest in art. He studied at the Academy of Fine Art in Amsterdam, where he was initially influenced by Impressionism and Post-Impressionism, especially the works of Van Gogh.

In the early 20th century, Mondrian's style evolved toward abstraction. Influenced by Cubism during a stay in Paris, he gradually eliminated curves and realistic elements from his paintings. By 1917, he co-founded the De Stijl movement with Theo van Doesburg, promoting a new artistic language using geometric shapes, straight lines, and primary colors (red, blue, yellow), along with black, white, and gray.

His signature style, known as "neoplasticism", aimed to express universal harmony through a grid of vertical and horizontal lines and blocks of color. One of his most iconic works in this style is "Composition with Red, Blue, and Yellow"

He died of pneumonia on February 1, 1944, in New York.

Piet Mondrian's abstract style had a profound impact on modern art, architecture, and design. His vision helped pave the way for Minimalism, Conceptual Art, and modern graphic design. Today, his works are celebrated in major museums around the world.

His journey shown how one art skill can change and even if your specialized in a certain type of abstraction you can experiment and I am impressed by his cubism work and his mag work for 'composition with red, blue, and yellow'



Composition with Red, Blue and Yellow

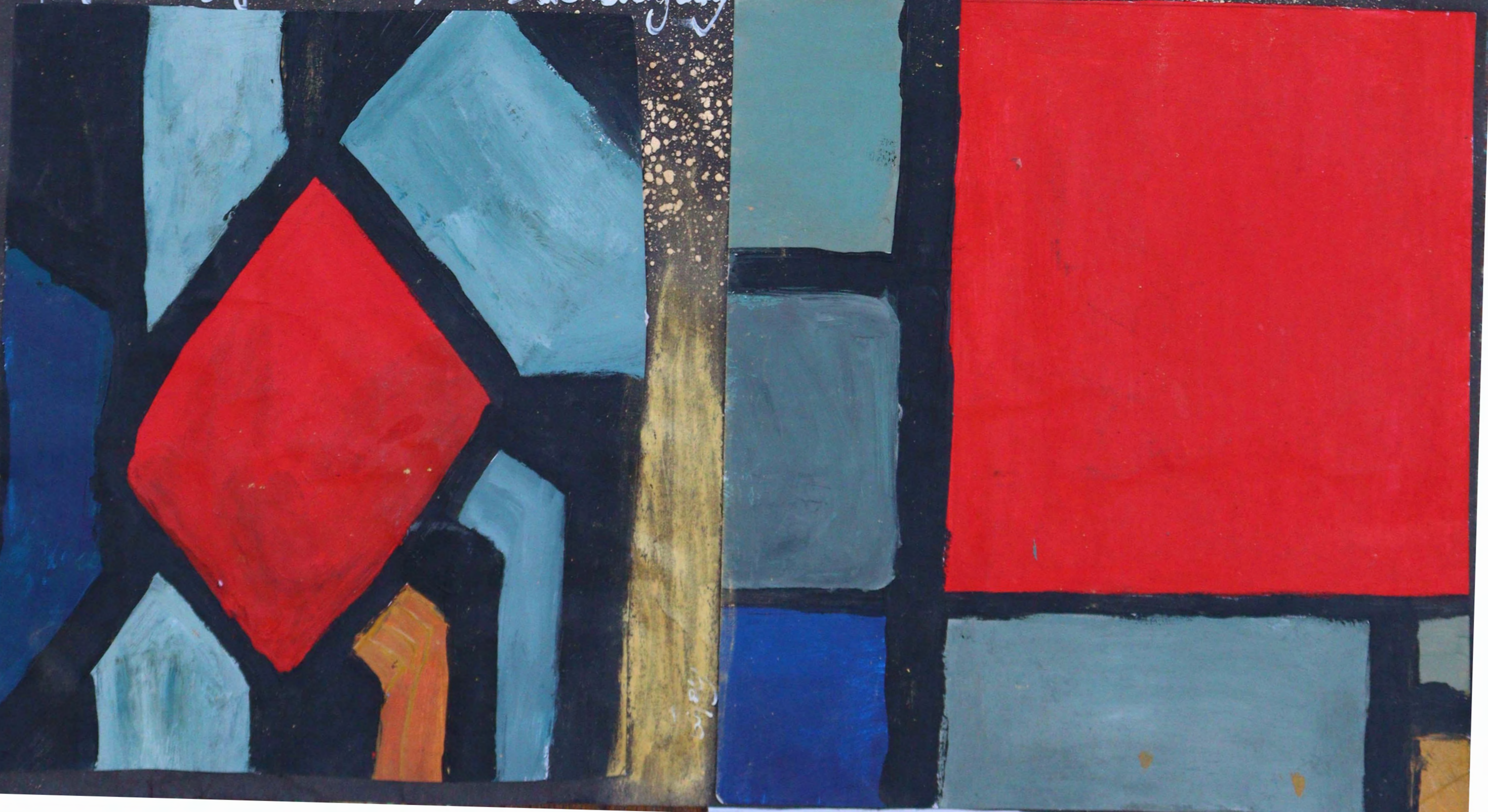
Mar. 1930

an oil on canvas painting.

Process

The biggest challenge I face was measuring the shape, find the right shade and as shown it's not the best and also making sure everything was even

My own style



Sohee Park

Biography

Sohee Park, known as "Miss Sohee," is a South Korean haute couture designer based in London, United Kingdom. Famously known for her romantic designs that blend traditional Korean aesthetics with contemporary flair.

After she graduated from the Central Saint Martins (University of the Arts) in 2020 she founded 'Miss Sohee' a London-based couture brand.

Ms. Park was born in Seoul, South Korea on the 29th of April 1996.

Her mother is an author, and her father is a professor grandmother loved embroidering, this inspired Sohee's fascination with intricate design. Despite hesitation her parents supported her move to London to pursue fashion.

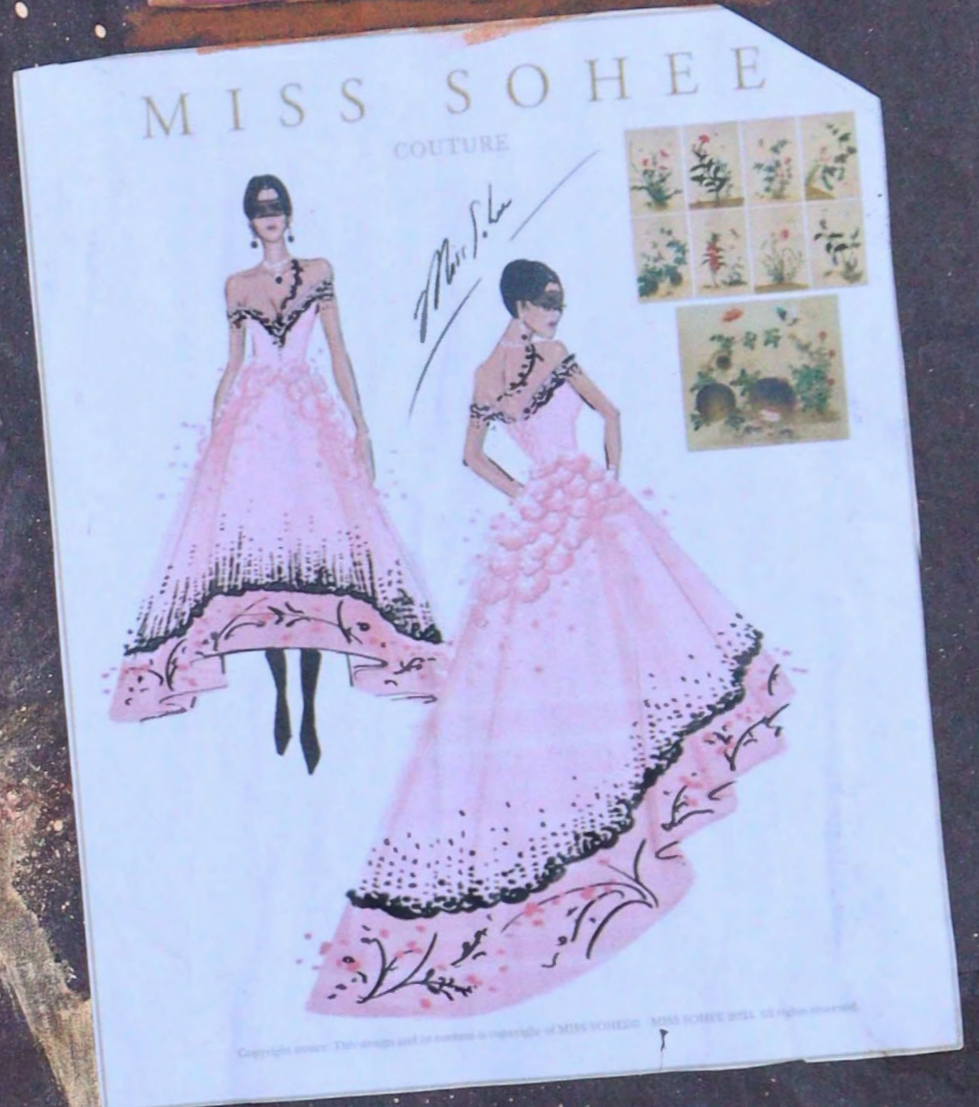
Park interned under designers such as Marc Jacobs and Molly Goddard.

Park's designs are characterized by their volume, curves, and detailed embellishments, often incorporating elements of Korean heritage, romantic motifs, and traditional embroidery.

Her debut collection, "The Girl in Full Bloom," was created during the COVID-19 pandemic and launched online, quickly gaining international attention.

Notable celebrities like Miley Cyrus, Cardi B, Bella Hadid, Lisa from Blackpink and Ariana Grande have worn her creations.

I choose Sohee Park because she is what I dream to be in my future. I wish to be successful like her, she started small and even though she was hesitated by her family she worked hard and showed everybody what she was capable of. She's a strong, bold, and intelligent woman, and her designs are haute and attract attention. They are unique and magnificent, they complement a female figure perfectly, and her work is feminine. It shows she loves women because their "a saying you can tell when a designer loves women in their work" and Miss Sohee loves women because her designs are truly a work of art. It shows that a work of art does not truly have to be on paper or painted but it can be in the clothes somebody wears. She's blending the line between reality and imagination, and her designs attract me.



As seen in Miss Sohee design her dress is long and flowing where as mine is more slim fit.

Also her designs, embellishments from a tree that she was inspired by where as mine I had flowers the corset is full with flowers.

And also as you can see most of Sohee design has a backpiece ever this current one of the leaf one on the women ever think it that big compared to mine.

The copy of Miss Sohee designs is a mix media in mine. Due to not having electronic devices I sketched it out and as work on the design I used the following: a gel pen, highlighter, marker (in the shades of pink).



5 The Artist that i chose is Miss Sohee

Haute Couture playground for designers, pattern makers, and fabric researchers...

Resonates with me the most because firstly her work is a fusion of high fashion and powerful femininity.

her work stands out visually



secondly miss sohee design aren't for every day normal attire, these for runway, gala events, red carpet, editorial photos and my design are also for specific events.



extremely hyper-feminine power.

3. her designs are incredibly feminine, but never soft or submissive. they are bold, theatrical, and commanding.

They have structured corsets, sculptural trains and towering silhouettes like her muses a gobbies-like presence.

Each one wishes empowerment, no just power.

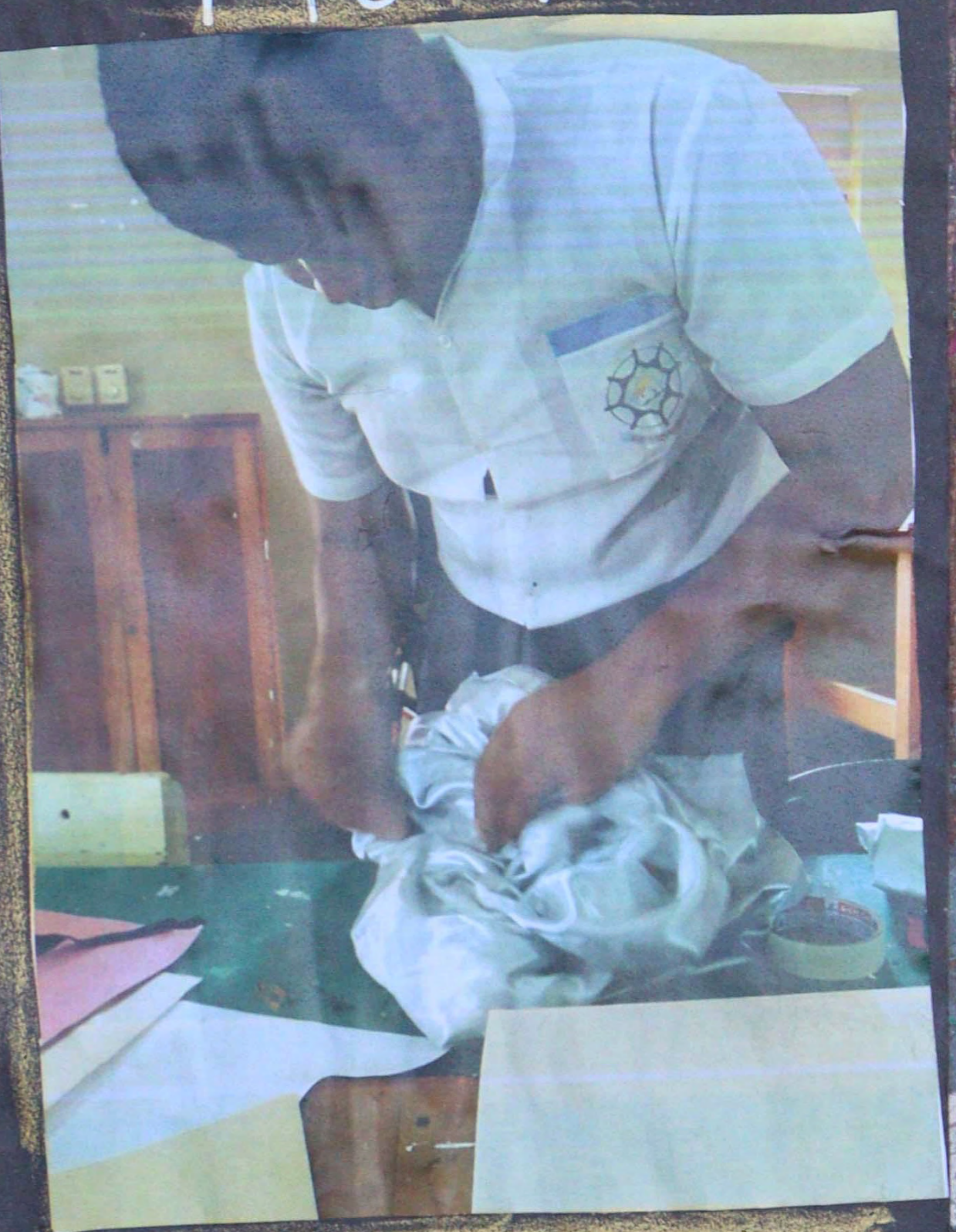


6

front

back

Pro
of
Mock



The process for mock was new and difficult
 firstly due to the fact it was the first time i was
 drapping a fabric on a mannequin to create
 a dress, i face many difficulties
 firstly when the fabric wouldnt cooperate it would not
 sit right on the mannequin.
 secondly there was a lot a wind even in a closed room
 because of the monsoon which blow all the fabric
 thirdly the time ~~take~~ crache in only under 4 hours
 i had to design and make this dress.

Final

7



Of

This piece did not fully turn out how i imagined it but it is similar to my design.

Overall there was alot of fixing need one i could do alot better than this.



mock

Process for final

8



The process creating this dress was exciting and new even though it was a little bit of a challenge with the help and guidance from my teacher.

This was my first time create a curly blossom tree with wires I got help from plastic.

also the dress we had to calculate the exact measurement to get the right flow and movement also so we could add the tree.

