



Cambridge O Level

GEOGRAPHY

2230/01

Paper 1 Geographical Themes

October/November 2024

INSERT

2 hours

INFORMATION

- This insert contains additional resources referred to in the questions.
- You may annotate this insert and use the blank spaces for planning. **Do not write your answers** on the insert.



This document has **8** pages.

Fig. 1.1 for Question 1

A recently regenerated area in a city in an HIC (high income country)



Fig. 2.2 for Question 2

A type of marine fishing in Brunei

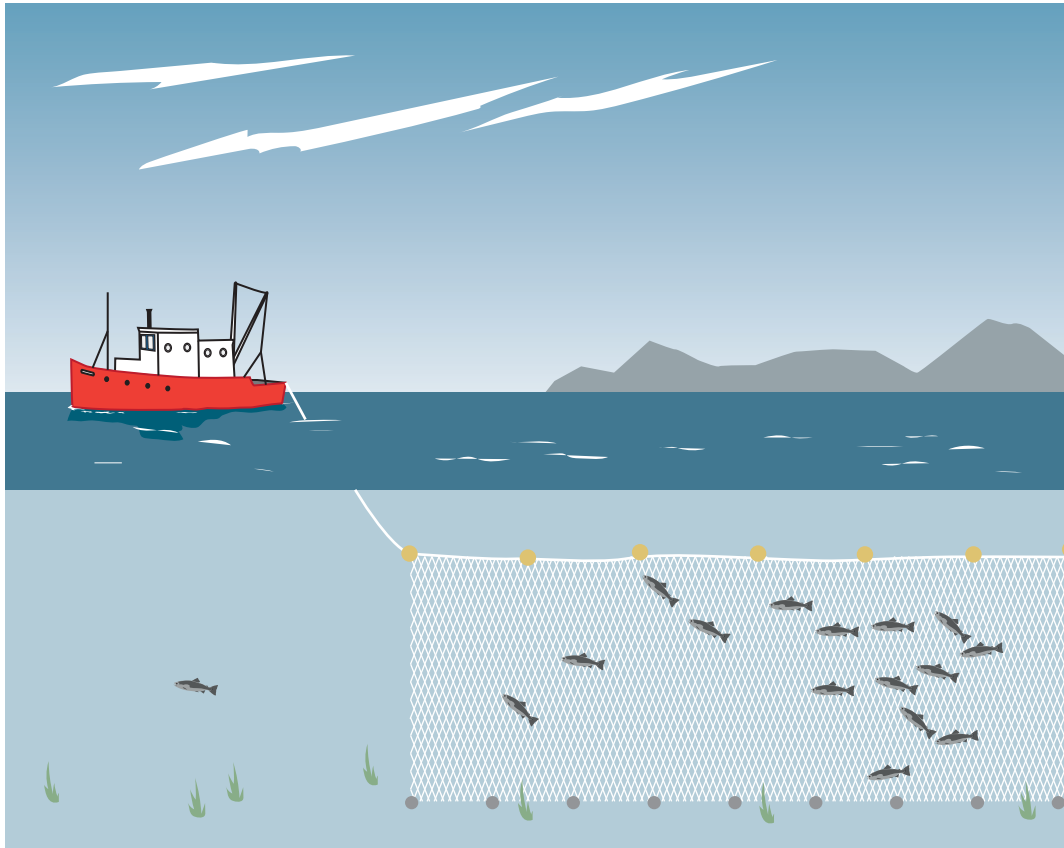


Fig. 3.1 for Question 3

The number of people killed in disasters, 1995–2015

Content removed due to copyright restrictions.

Fig. 3.2 for Question 3

The Nile River delta

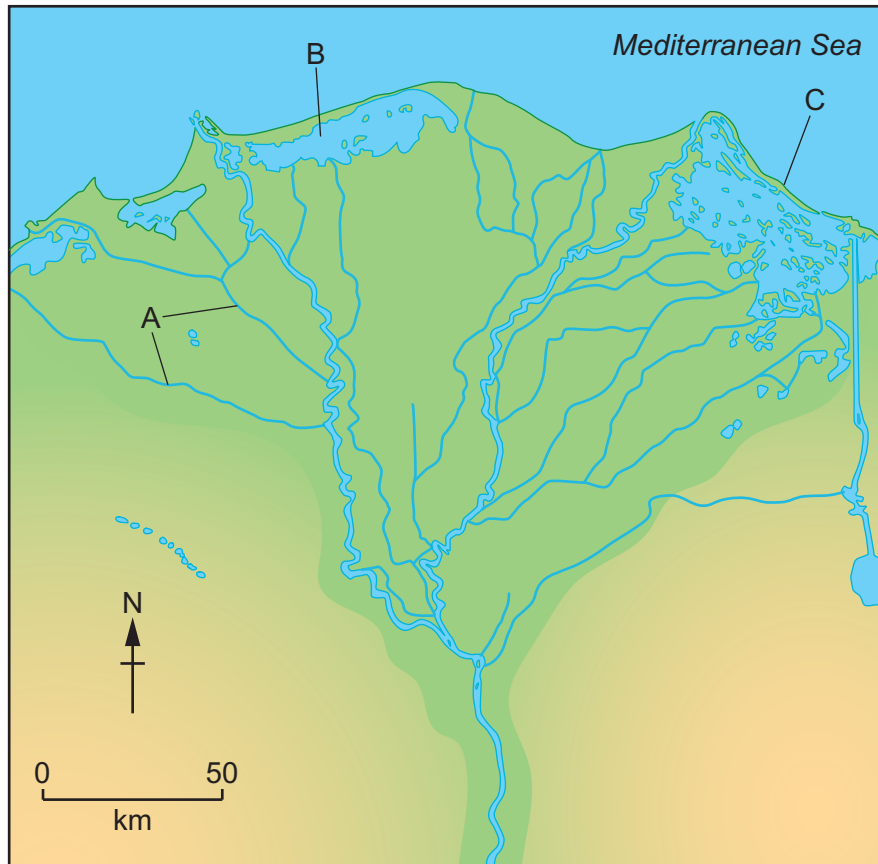


Fig. 4.2 for Question 4

The location of recent earthquakes and volcanic eruptions

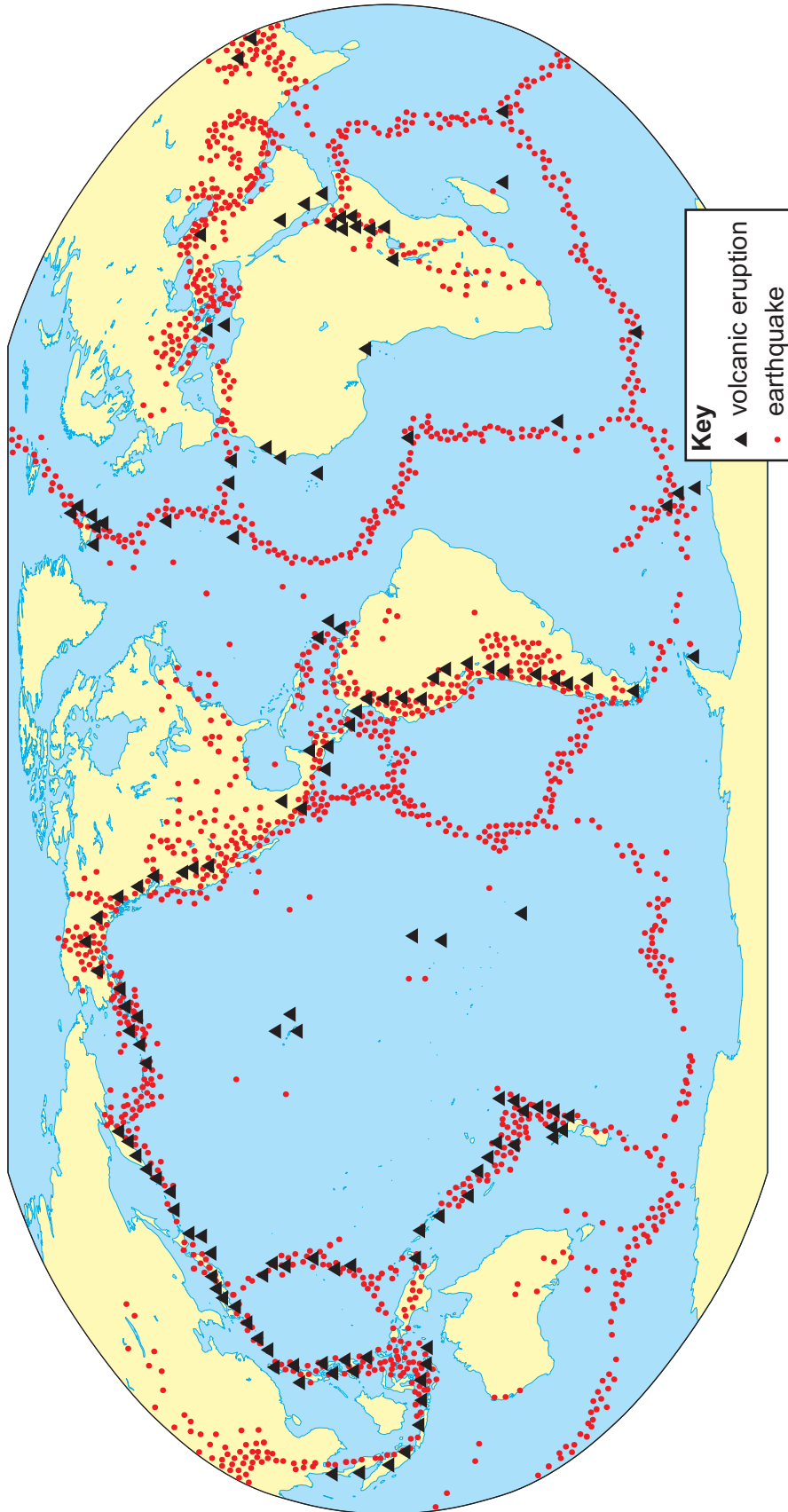


Fig. 5.2 for Question 5

An industrial area in China



Fig. 6.1 for Question 6

An image used by a travel firm to promote global tourism



The boundaries and names shown, the designations used and the presentation of material on any maps contained in this question paper/insert do not imply official endorsement or acceptance by Cambridge Assessment International Education concerning the legal status of any country, territory, or area or any of its authorities, or of the delimitation of its frontiers or boundaries.

Permission to reproduce items where third-party owned material protected by copyright is included has been sought and cleared where possible. Every reasonable effort has been made by the publisher (UCLES) to trace copyright holders, but if any items requiring clearance have unwittingly been included, the publisher will be pleased to make amends at the earliest possible opportunity.

To avoid the issue of disclosure of answer-related information to candidates, all copyright acknowledgements are reproduced online in the Cambridge Assessment International Education Copyright Acknowledgements Booklet. This is produced for each series of examinations and is freely available to download at www.cambridgeinternational.org after the live examination series.

Cambridge Assessment International Education is part of Cambridge Assessment. Cambridge Assessment is the brand name of the University of Cambridge Local Examinations Syndicate (UCLES), which is a department of the University of Cambridge.