



Cambridge O Level

CANDIDATE
NAME



CENTRE
NUMBER

--	--	--	--	--

CANDIDATE
NUMBER

--	--	--	--

GEOGRAPHY

2230/02

Paper 2 Geographical Skills

October/November 2024

1 hour 45 minutes

You must answer on the question paper.

You will need:

Insert (enclosed)	Plain paper
1:50 000 survey map (enclosed)	Protractor
Calculator	Ruler

INSTRUCTIONS

- Answer **all** questions.
- Use a black or dark blue pen. You may use an HB pencil for any diagrams or graphs.
- Write your name, centre number and candidate number in the boxes at the top of the page.
- Write your answer to each question in the space provided.
- Do **not** use an erasable pen or correction fluid.
- Do **not** write on any bar codes.
- Sketch maps and diagrams should be drawn whenever they serve to illustrate the answer.
- If additional space is needed, you should use the lined pages at the end of this booklet; the question number or numbers must be clearly shown.

INFORMATION

- The total mark for this paper is 60.
- The number of marks for each question or part question is shown in brackets [].
- The insert contains additional resources referred to in the questions.

This document has **20** pages. Any blank pages are indicated.



Section A: Mapwork skills

1 Study the map extract of Montego Bay on the island of Jamaica. The scale is 1:50 000. The heights are in metres.

(a) (i) Name the airport in grid square 5305.

..... [1]

(ii) Use the map to describe the site and situation of the airport in grid square 5305.

.....
.....
.....
.....
.....
..... [3]

(iii) If you travel along the road towards the airport, from 630077 to the Police Station (PS) at 585076:

- In which direction will you travel?

.....

- How far will you travel?

.....

[2]

(b) Name **three** different services found in grid square 5202 in the settlement of Montego Bay.

- 1
- 2
- 3

[3]



(c) Study the coastal area on the map, shown in Fig. 1.1 below.

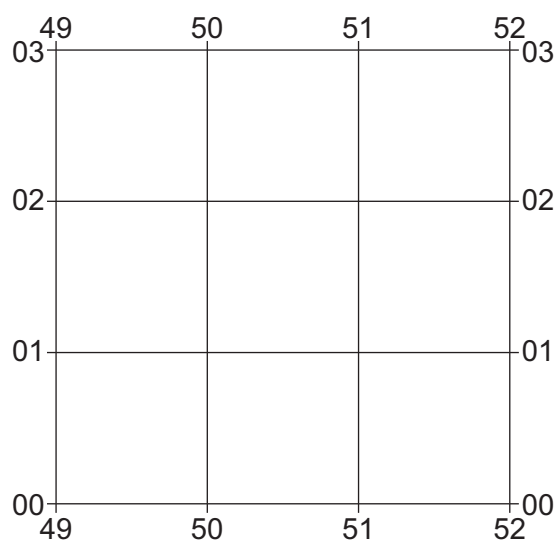


Fig. 1.1

Describe the **physical** features of the coastal area.

.....

.....

.....

.....

.....

..... [3]

(d) **Complete the table below** by drawing an arrow between the map location and the correct land use. One has been completed for you.

map location	land use
5300	Woodland
5098	Banana Plantation
5698	Trees and Scrub
5804	Mixed or scattered Cultivation
5903	Sugar Cane Plantation

[4]





(e) Study the area on the map extract shown in Fig. 1.2 below.

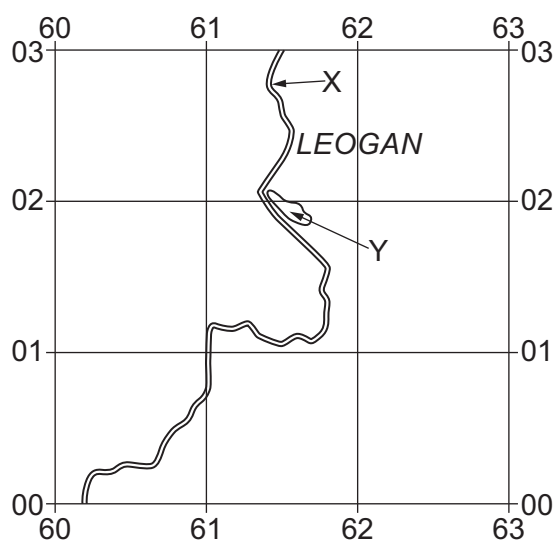


Fig. 1.2

(i) Use the map to identify features X and Y shown on Fig. 1.2.

- X

.....

- Y

.....

[2]

(ii) **Add a dot and the letter Z onto Fig. 1.2 above** to show the location of a quarry. [1]

(iii) State the total area covered by the grid squares in Fig. 1.2. Give your answer in square kilometres (km²).

..... [1]

[Total: 20]





TURN OVER FOR QUESTION 2

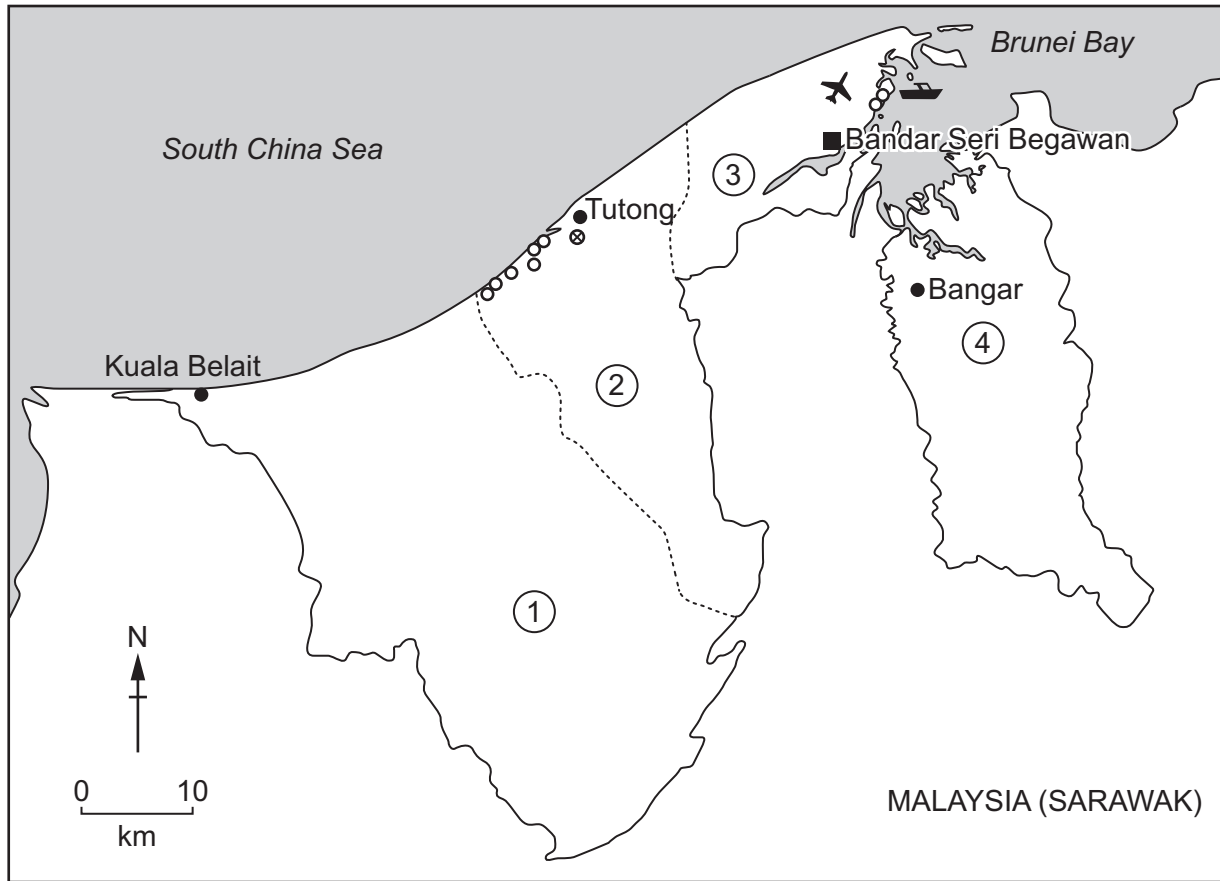




Section B: Geographical skills

- 2 Study Fig. 2.1, which shows the locations of Golden Corporation's aquaculture activities in Brunei.

Locations of Golden Corporation's aquaculture activities in Brunei



Key

- International boundary
- District boundary
- Capital City
- District Capital
- Golden Corporation aquaculture activity
- ⊗ Golden Corporation seafood processing factory
- ✈ Brunei International Airport
- ⚓ Muara Port
- ① Belait district
- ② Tutong district
- ③ Brunei-Muara district
- ④ Temburong district

Fig. 2.1





(a) Using Fig. 2.1, describe the locations of Golden Corporation's aquaculture activities in Brunei.

.....

.....

.....

..... [2]

(b) Study Fig. 2.2 (Insert), which shows some photographs of Golden Corporation's aquaculture activities in Brunei.

Complete the table below by adding the words primary, secondary, tertiary or quaternary in the correct place.

photograph	industry sector
A	
B	
C	

[3]

TURN OVER FOR QUESTION 2(c)





- (c) Study Fig. 2.1 again to identify the location of the Golden Corporation seafood processing factory and Fig. 2.3, which shows factors affecting the location of a factory.

Factors affecting the location of a factory

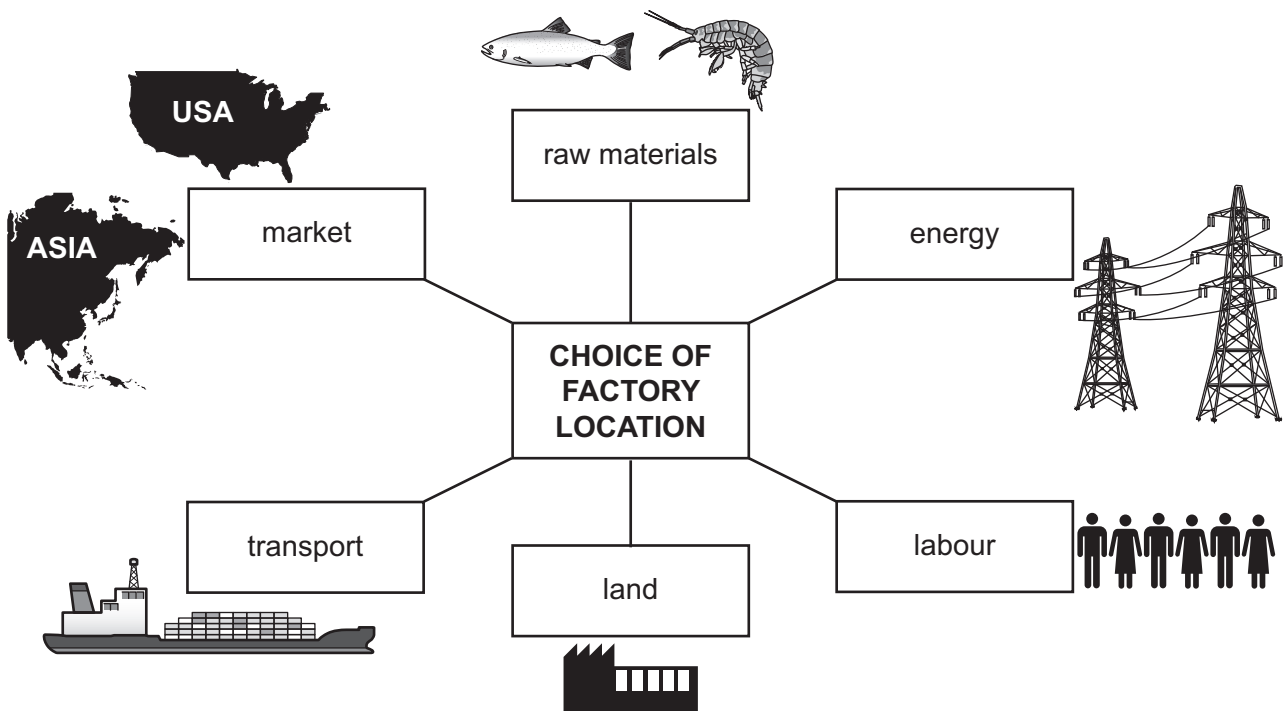


Fig. 2.3

Do you think that Golden Corporation made a good choice of location for their factory?
Explain your decision.

.....

.....

.....

.....

.....

..... [3]

- (d) State **two** reasons why Brunei was keen to increase the value of aquaculture production from B\$ 10 million in 2015 to B\$ 400 million by 2020.

.....

.....

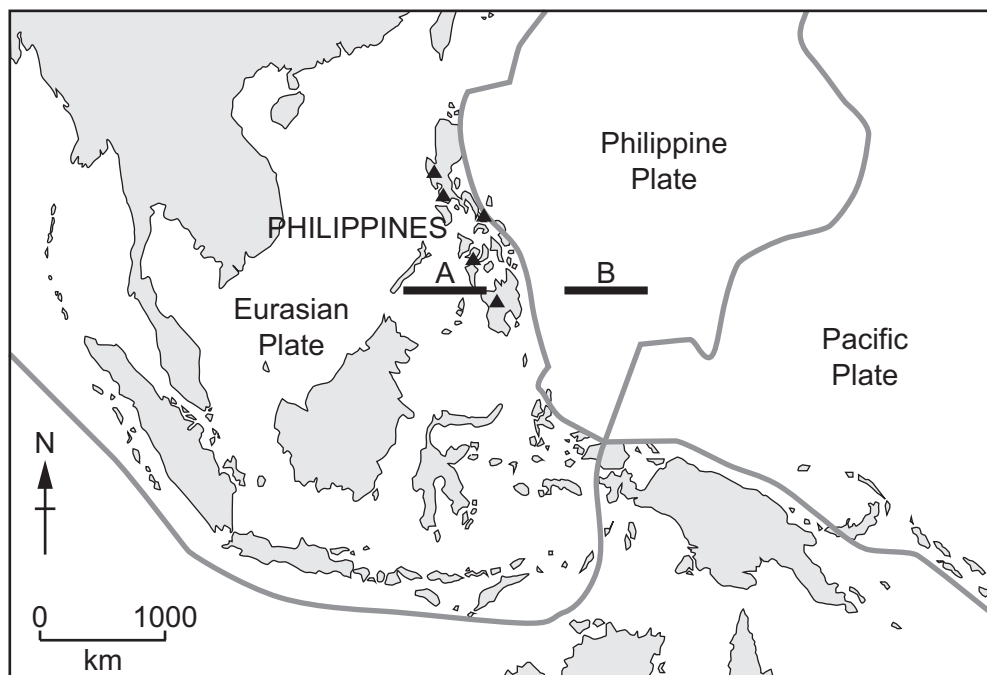
.....

..... [2]

[Total: 10]



3 (a) Study Fig. 3.1, which shows a map of the area around the Philippines.



Key

▲ major volcano

Fig. 3.1

(i) Name the tectonic plate on which the Philippines is located.

..... [1]

(ii) How many major volcanoes are there in the Philippines as shown in Fig. 3.1?

..... [1]

(iii) The Philippines is located on a convergent plate boundary. **On Fig. 3.1:**

- draw an arrow at A to show the direction of movement of the Eurasian Plate
- draw an arrow at B to show the direction of movement of the Philippine Plate.

[2]





(b) Study Fig. 3.2, which shows information about the Mayon volcano eruption in January 2018.

Mayon volcano eruption, the Philippines, January 2018

KEY FIGURES



→ 84 400

Total displaced population

Displaced population by city/municipality

Legazpi City	15 474
Santo Domingo	13 705
Daraga	13 374
Camalig	11 367
Guinobatan	11 187
Tabaco City	7 600
Ligao City	5 792
Malilipot	5 333
Bacacay	583

\$3.8 million

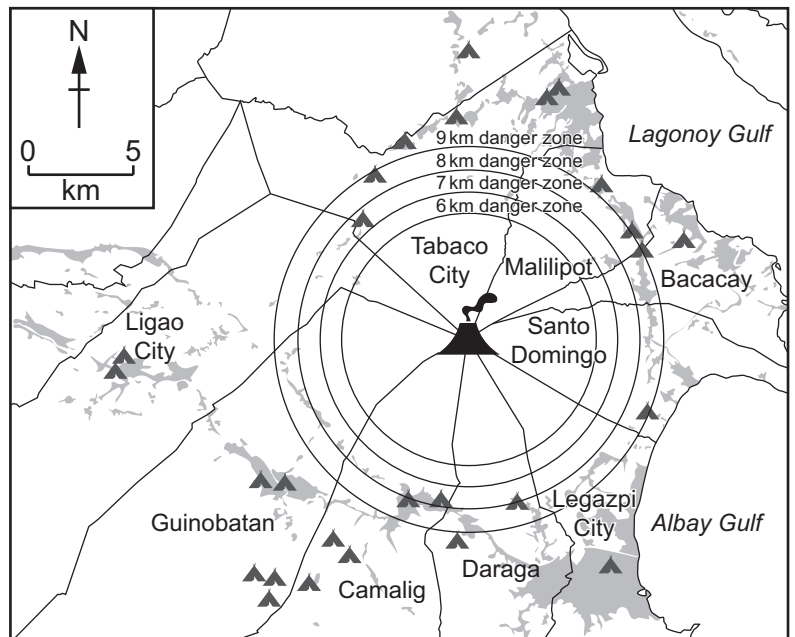


production losses in
agriculture and fisheries

\$0.5 million



worth of damages to
livestock and poultry



Key



Mayon volcano



evacuation centres



municipal boundary



built-up area

Fig. 3.2

- (i) Calculate the total cost of losses in agriculture, fisheries, livestock and poultry. Show your working.

.....

.....

.....

..... [2]





- (ii) Use Fig. 3.2 to explain why more people were displaced from Legazpi City than Ligao City.

.....

.....

.....

..... [2]

- (c) Describe **two** ways scientists try to predict volcanic eruptions.

.....

.....

.....

..... [2]

[Total: 10]

TURN OVER FOR QUESTION 4





Section C: Geographical investigation

- 4 Students in Italy did some fieldwork to investigate the impact of tourism on Venice. They wanted to find out what the impacts of tourism were on both the local people and the environment of Venice.

The students agreed to investigate the following hypotheses:

Hypothesis 1: *Tourism has a negative impact on the environment.*

Hypothesis 2: *Tourism creates more advantages than disadvantages for local people.*

- (a) In order to investigate **Hypothesis 1**, the students did an Environmental Quality Survey at four different sites in Venice: three tourist areas and one residential area.

Fig. 4.1 (Insert) shows the location of the four fieldwork sites with a photograph of each location.

The environmental quality recording sheet they used is shown in Fig. 4.2 below.

Environmental quality recording sheet

Name of area surveyed:							
Date:		Time:					
feature	negative description	-2	-1	0	+1	+2	positive description
condition of buildings	poorly maintained						well maintained
amount of greenery	no greenery						much greenery
litter	much litter						no litter
noise pollution	noisy						quiet
air pollution	high level of air pollution						low level of air pollution
crowdedness	crowd of people						no people

Fig. 4.2

- (i) Before they went to do their fieldwork, the students did a pilot study at a local tourist destination near their school.

Suggest **two** reasons why they did a pilot study.

1

.....

2

.....

[2]





(ii) Describe how the students used the recording sheet shown in Fig. 4.2.

.....

.....

.....

..... [2]

TURN OVER FOR QUESTION 4(a)(iii)





- (iii) When the students had completed their Environmental Quality Survey they calculated the total score for each site. The results are shown in Fig. 4.3 below.

Complete Fig. 4.3 below by adding the total score for Site 2.

Results of Environmental Quality Survey

	Site 1	Site 2	Site 3	Site 4
condition of buildings	+1	+1	+2	0
amount of greenery	-1	-2	-2	+2
litter	-1	-2	0	+1
noise pollution	-2	-1	0	+1
air pollution	-1	0	0	0
crowdedness	-1	-2	-1	+1
total score	-5		-1	+5

Fig. 4.3

[1]

- (iv) The graph for Site 4 has been drawn on Fig. 4.4 below. **Complete the graph for Site 1 on Fig. 4.4 below** using the results shown in Fig. 4.3. Site 4 has been completed.

Graph to show environmental quality scores

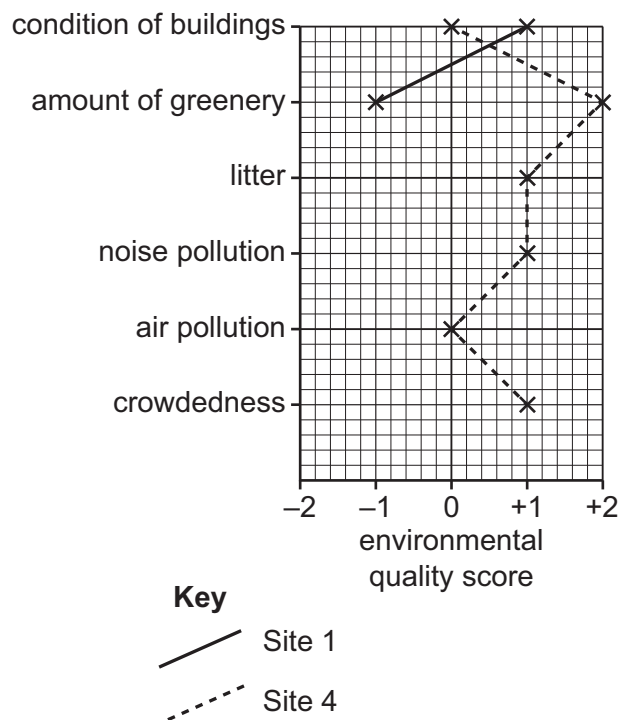


Fig. 4.4

[3]





- (v) The students compared the results for the three tourist sites (1–3) with the residential area (4) and decided that **Hypothesis 1: *Tourism has a negative impact on the environment*** was accepted. Use data from Fig. 4.3 and Fig. 4.4 to support their conclusion.

.....

.....

.....

.....

.....

.....

.....

..... [4]

- (b) The students decided to use a questionnaire to investigate **Hypothesis 2: *Tourism creates more advantages than disadvantages for local people.***

The questionnaire is shown in Fig. 4.5 (Insert).

- (i) Name and describe **one** sampling method to select 100 residents of Venice to complete the questionnaire.

Name of sampling method

Description

.....

..... [2]

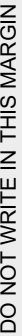
TURN OVER FOR QUESTION 4(b)(ii)



DO NOT WRITE IN THIS MARGIN

DO NOT WRITE IN THIS MARGIN

DO NOT WRITE IN THIS MARGIN



[2]

DO NOT WRITE IN THIS MARGIN

conclusion	tick (✓)
Hypothesis 2 is accepted	
Hypothesis 2 is inconclusive	
Hypothesis 2 is rejected	

[Total: 20]



This image shows a full page of white paper with horizontal dotted lines. The lines are evenly spaced and run across the width of the page, providing a guide for handwriting practice. There are no margins, text, or other markings on the page.

[illegible]



DO NOT WRITE IN THIS MARGIN





BLANK PAGE

DO NOT WRITE IN THIS MARGIN

DO NOT WRITE IN THIS MARGIN

DO NOT WRITE IN THIS MARGIN

DO NOT WRITE IN THIS MARGIN

DO NOT WRITE IN THIS MARGIN

The boundaries and names shown, the designations used and the presentation of material on any maps contained in this question paper/insert do not imply official endorsement or acceptance by Cambridge Assessment International Education concerning the legal status of any country, territory, or area or any of its authorities, or of the delimitation of its frontiers or boundaries.

Permission to reproduce items where third-party owned material protected by copyright is included has been sought and cleared where possible. Every reasonable effort has been made by the publisher (UCLES) to trace copyright holders, but if any items requiring clearance have unwittingly been included, the publisher will be pleased to make amends at the earliest possible opportunity.

To avoid the issue of disclosure of answer-related information to candidates, all copyright acknowledgements are reproduced online in the Cambridge Assessment International Education Copyright Acknowledgements Booklet. This is produced for each series of examinations and is freely available to download at www.cambridgeinternational.org after the live examination series.

Cambridge Assessment International Education is part of Cambridge Assessment. Cambridge Assessment is the brand name of the University of Cambridge Local Examinations Syndicate (UCLES), which is a department of the University of Cambridge.

