



Cambridge O Level

GEOGRAPHY

2230/02

Paper 2 Geographical Skills

May/June 2024

INSERT

1 hour 45 minutes

INFORMATION

- This insert contains additional resources referred to in the questions.
- You may annotate this insert and use the blank spaces for planning. **Do not write your answers** on the insert.



This document has 8 pages.

Fig. 1.2 for Question 1

Satellite image of Rarotonga

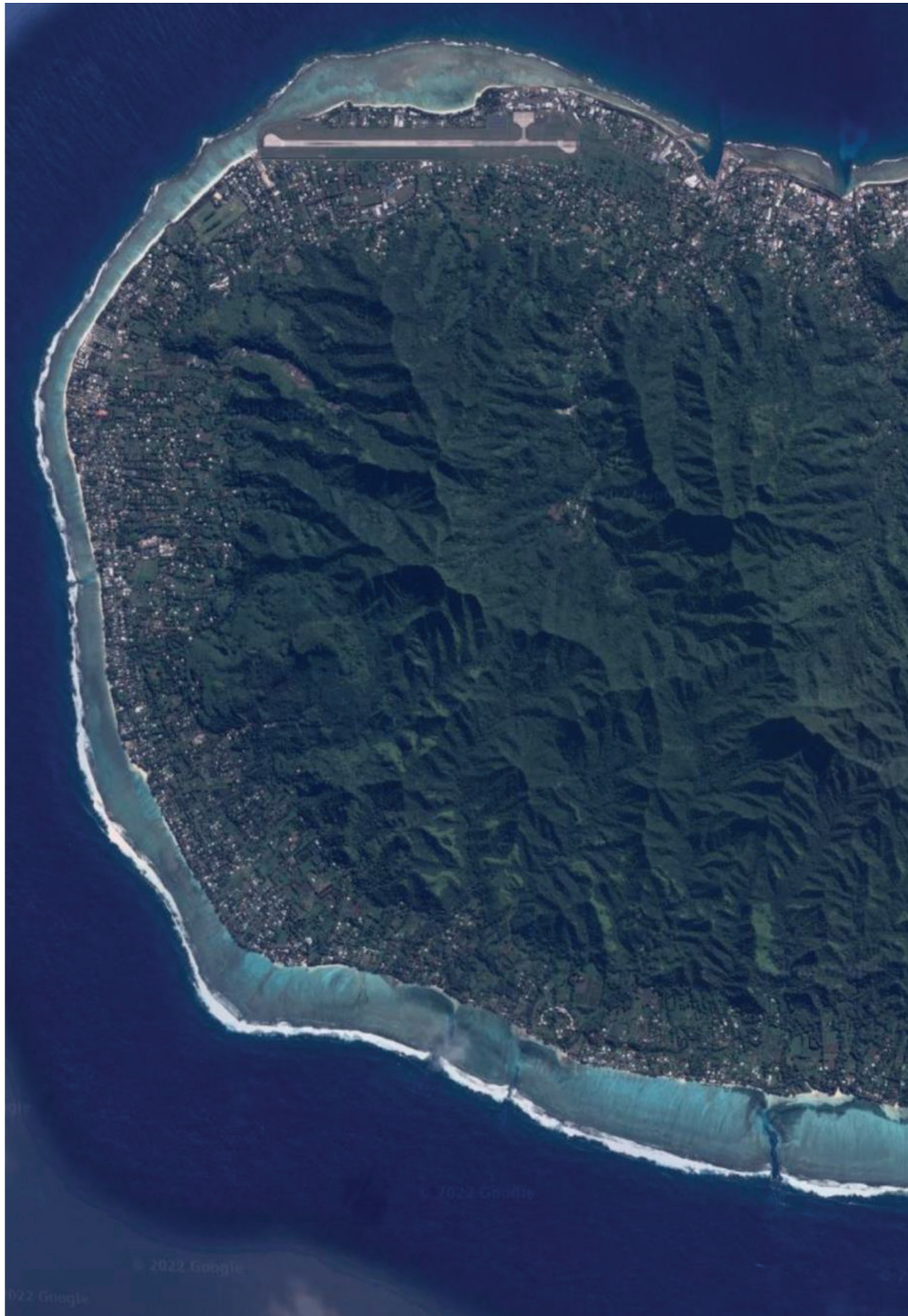
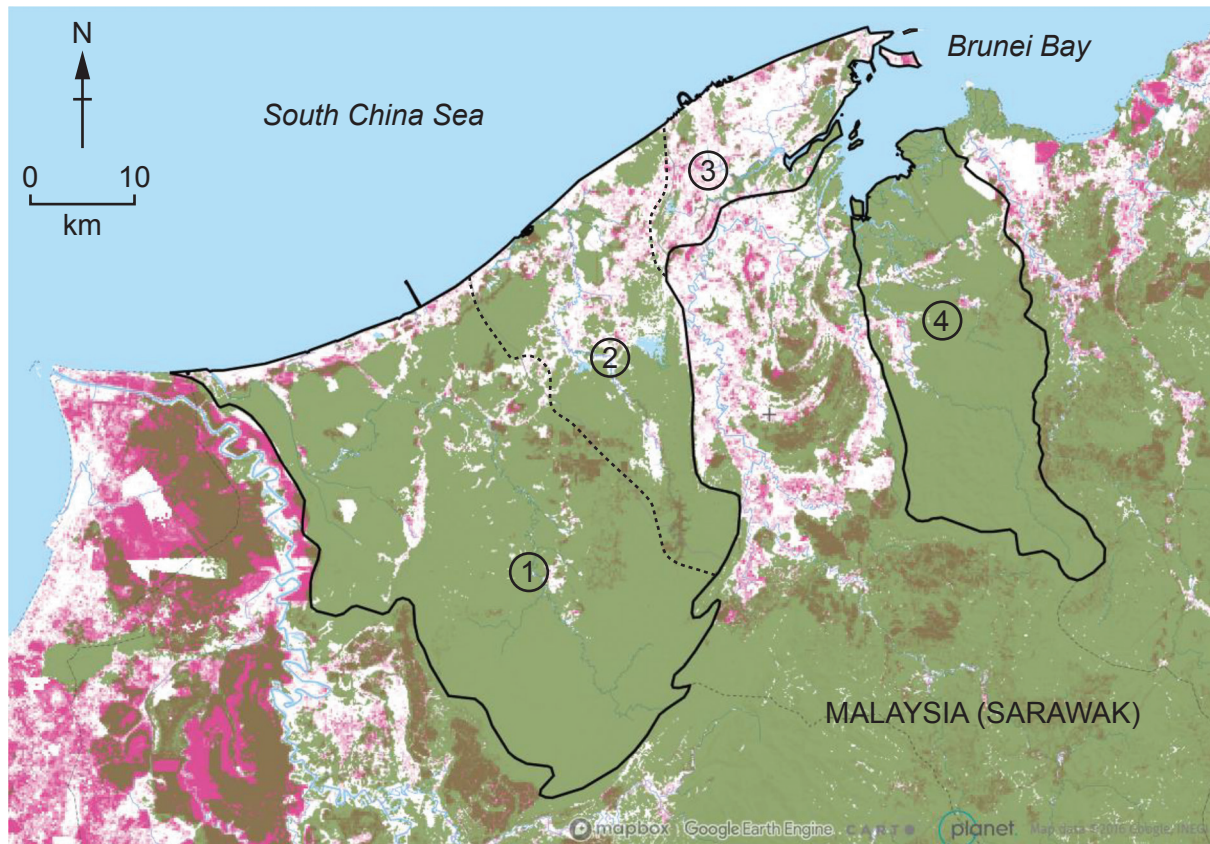


Fig. 2.3 for Question 2

Satellite image of tree cover loss in Brunei

**Key**

- international boundary
- - - district boundary
- ① Belait district
- ② Tutong district
- ③ Brunei-Muara district
- ④ Temburong district
- primary forest
- tree cover loss

Fig. 3.2 for Question 3

Population of continents, 1950–2100 (estimated)

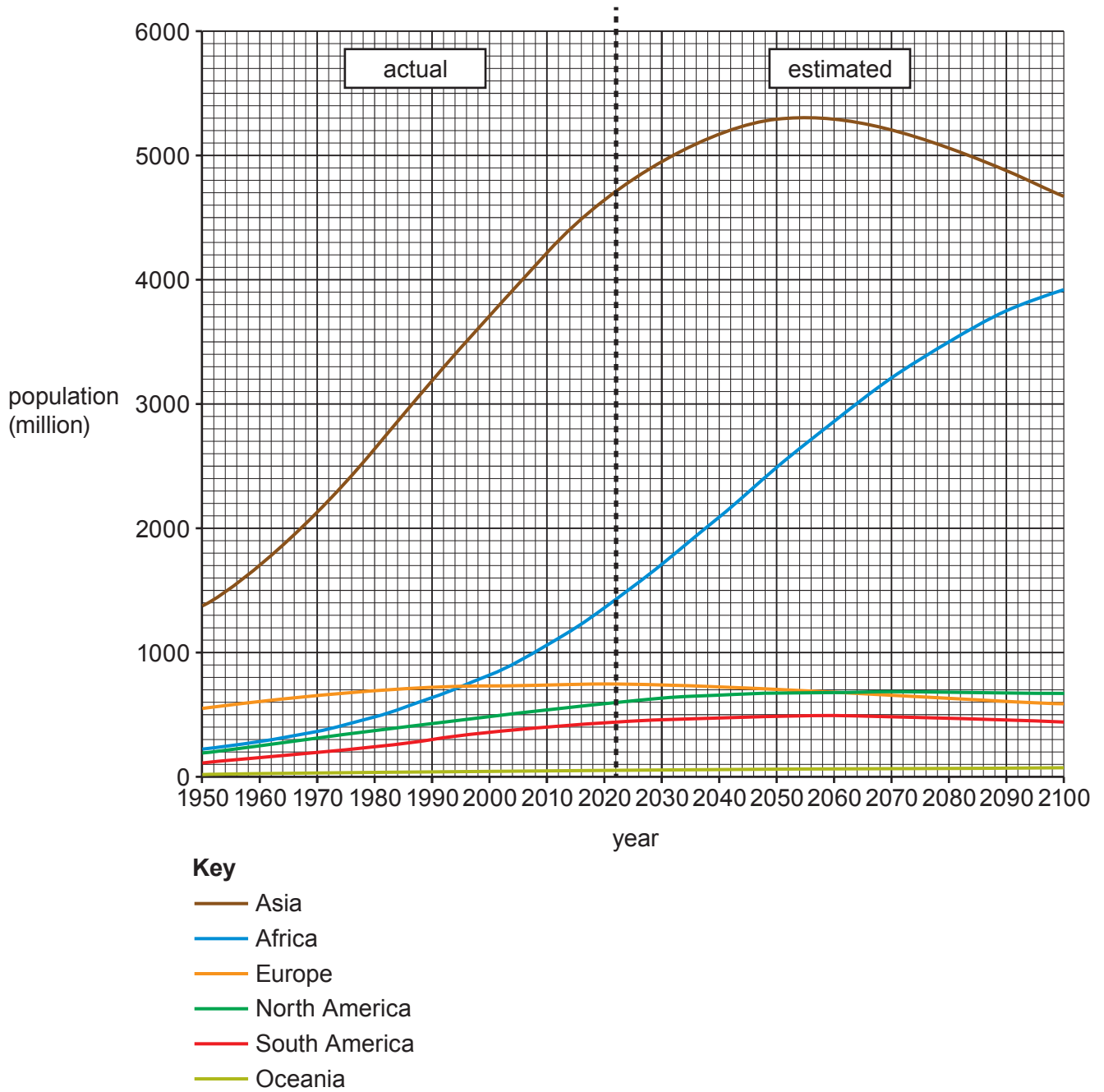
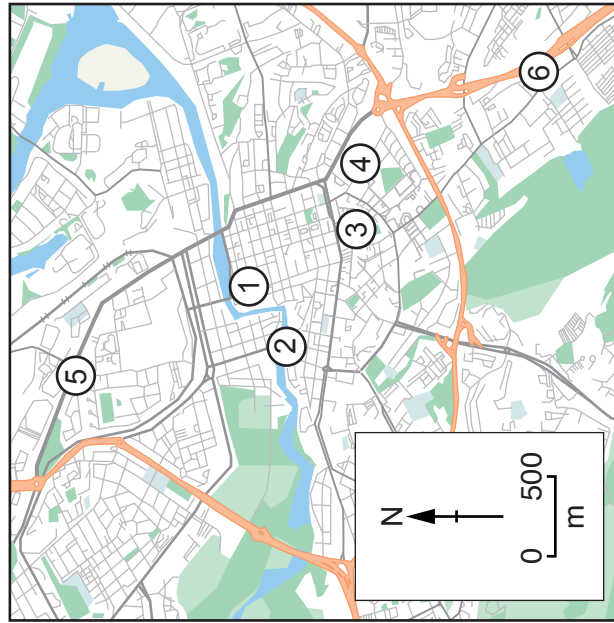
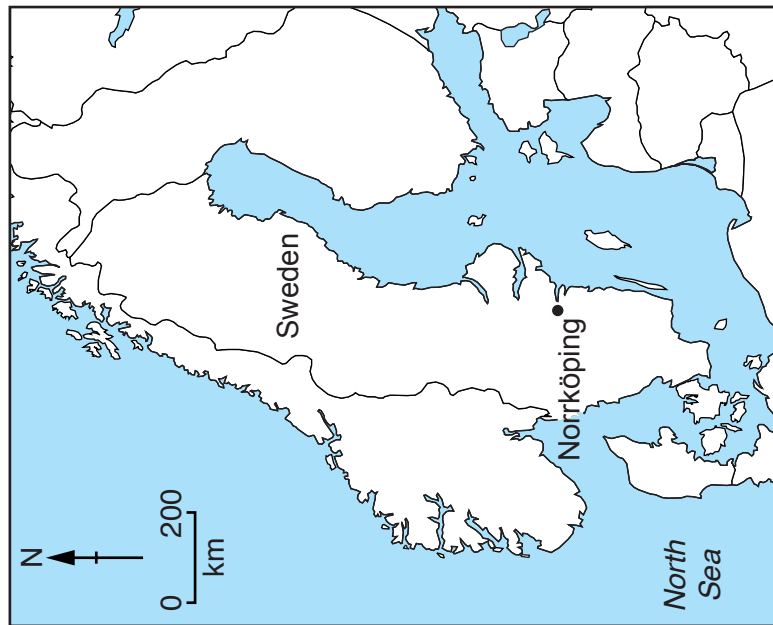
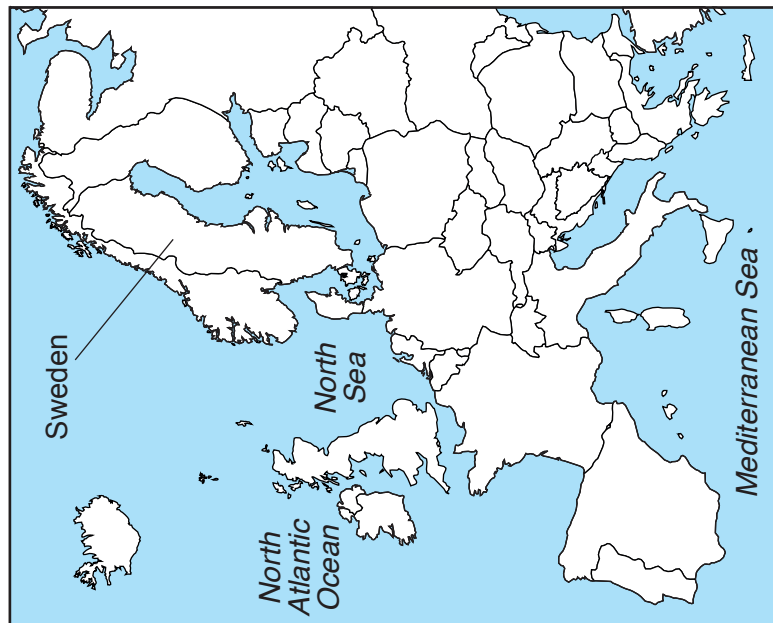


Fig. 4.1 for Question 4

Fieldwork locations



Key

- ① Location 1 (Gamla Staden)
- ② Location 2 (Berget)
- ③ Location 3 (Söderstaden)
- ④ Location 4 (Ljura)
- ⑤ Location 5 (Fredriksdalsgatan)
- ⑥ Location 6 (Hageby)

Table 4.1 for Question 4

Traffic survey results

	Location 1 (city centre)	Location 2 (500 m from city centre)	Location 3 (800 m from city centre)	Location 4 (1100 m from city centre)	Location 5 (1300 m from city centre)	Location 6 (1500 m from city centre)
cars	45	11	31	19	14	54
vans/ lorries	16	5	4	3	10	7
buses/ trams	6	5	0	6	0	6
bikes	7	5	10	9	0	3
total	74	26	45	37	24	70

Fig. 4.2 for Question 4

Graph to show traffic survey results

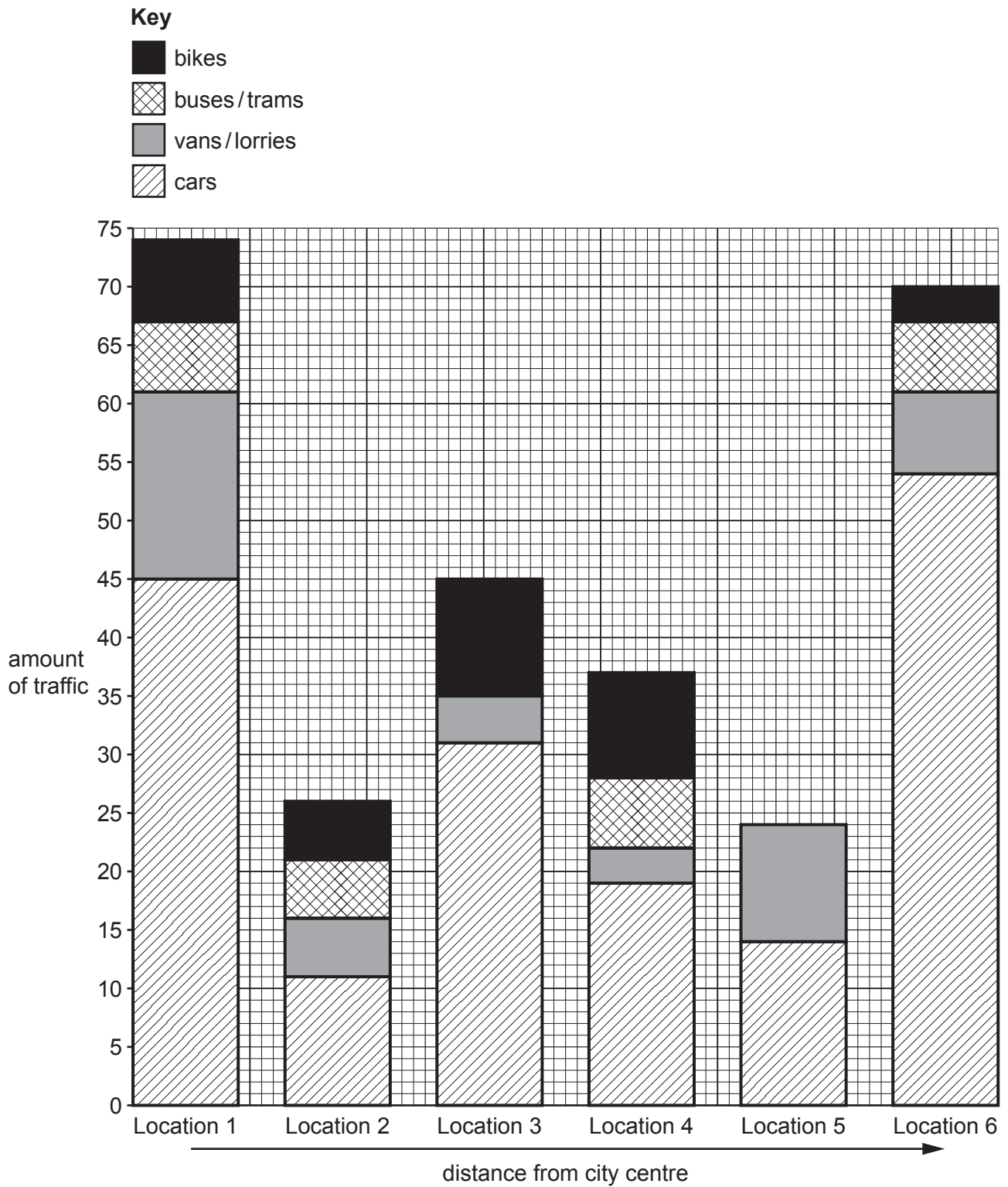


Table 4.2 for Question 4

Results of Environmental Quality Survey

	Location 1 (city centre)	Location 2 (500 m from city centre)	Location 3 (800 m from city centre)	Location 4 (1100 m from city centre)	Location 5 (1300 m from city centre)	Location 6 (1500 m from city centre)
condition of roads and pavements	+2	+2	+2	+2	−2	−1
noise and air pollution	−1	+2	+2	−1	+1	+1
litter	−1	+2	+2	−1	+1	+1
condition of buildings	+2	+2	−2	+2	−2	−1
graffiti and vandalism	+2	+3	−1	−1	+2	−1
street furniture and art	+3	+2	−2	−2	−3	+1
greenery/ landscaping	+1	−3	+2	+2	−2	+2
total score	+8	+10	+3	+1	−5	+2

The boundaries and names shown, the designations used and the presentation of material on any maps contained in this question paper/insert do not imply official endorsement or acceptance by Cambridge Assessment International Education concerning the legal status of any country, territory, or area or any of its authorities, or of the delimitation of its frontiers or boundaries.

Permission to reproduce items where third-party owned material protected by copyright is included has been sought and cleared where possible. Every reasonable effort has been made by the publisher (UCLES) to trace copyright holders, but if any items requiring clearance have unwittingly been included, the publisher will be pleased to make amends at the earliest possible opportunity.

To avoid the issue of disclosure of answer-related information to candidates, all copyright acknowledgements are reproduced online in the Cambridge Assessment International Education Copyright Acknowledgements Booklet. This is produced for each series of examinations and is freely available to download at www.cambridgeinternational.org after the live examination series.

Cambridge Assessment International Education is part of Cambridge Assessment. Cambridge Assessment is the brand name of the University of Cambridge Local Examinations Syndicate (UCLES), which is a department of the University of Cambridge.