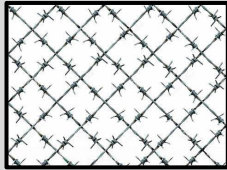


View Through a Fence

I chose the theme "View through a Fence" for my art IGCSE coursework because it offers a unique perspective that lets me play with framing and depth. The fence acts as a natural barrier, creating contrast between what's visible through it and what lies beyond, which can symbolise boundaries or separation. It also gives me the chance to explore the contrast between man-made structures and the natural world, while focusing on everyday objects in an artistic way. I was drawn to this theme for its potential to convey deeper meanings or personal connections to limitations and distant views.

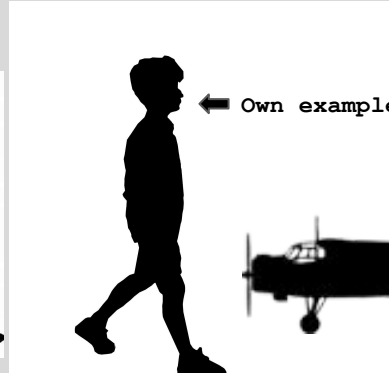


London

Hamburg



First-hand sources



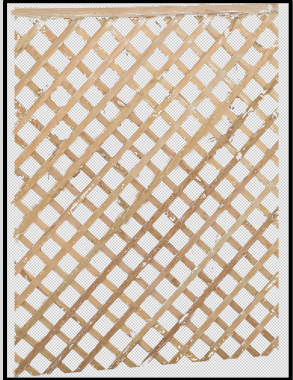
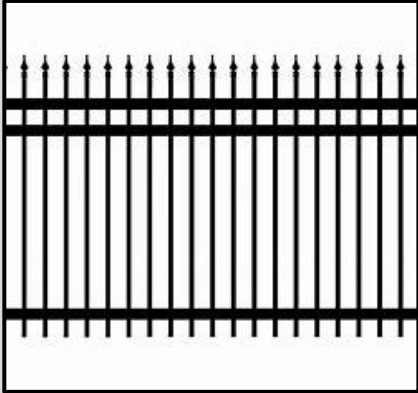
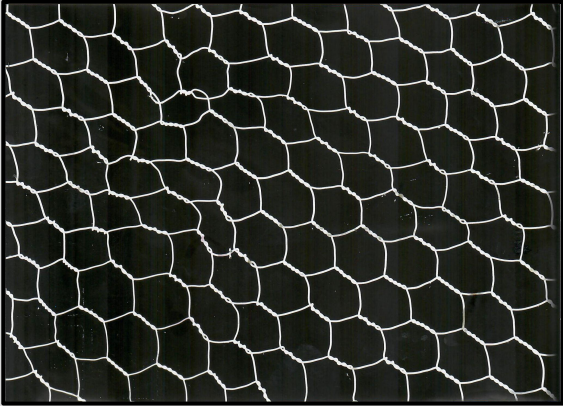
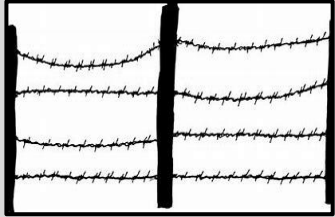
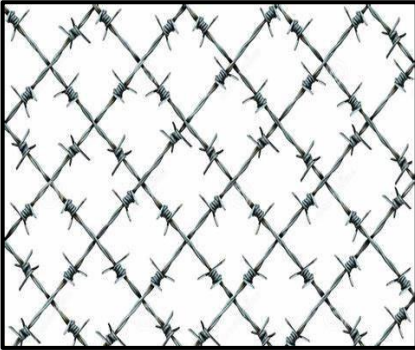
← Own example





I used Photoshop to create this piece which portrays the beauty of Hamburg from the perspective "On the Water" I then added a fence to match my theme a view through a fence I took the images below and merged them together to create the illusion of it being one picture

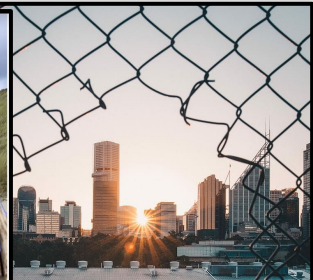
These are the fences I used in some of my projects portraying my theme View Through A Fence





First Ideas

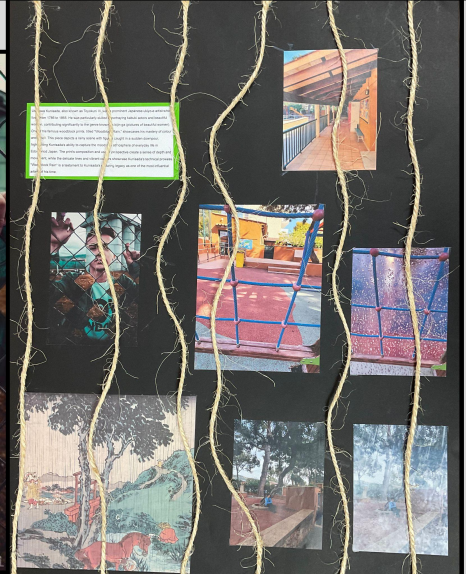
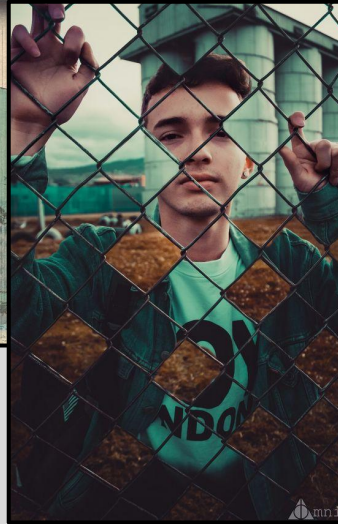
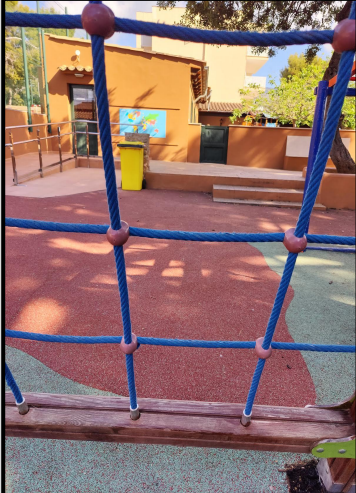
← Own Piece



↑ Own Piece ↓

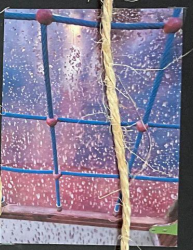
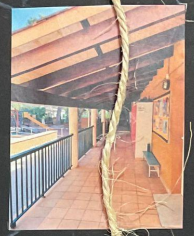


I chose Utagawa Kunisada as an artist for my work because of his amazing ability to capture mood and atmosphere, especially in scenes involving weather, like rain. His print "Woodblock Rain" shows how he uses rain to create a certain feeling, with the figures in the scene caught in a downpour. Kunisada's use of colour, detail, and perspective brings the rainy atmosphere to life, making it feel real and emotional. His skill in portraying everyday life with such depth and atmosphere really drew me to his work for exploring how rain can influence a scene.





Utagawa Kuniyoshi, also known as Toyokuni III, was a prominent Japanese ukiyo-e artist who lived from 1798 to 1865. He was particularly skilled at portraying kabuki actors and beautiful women, contributing significantly to the genre known as ukiyo-e (pictures of beautiful women). One of his famous woodblock prints, titled "Woodblock Rain," showcases his mastery of colour and atmosphere. This piece depicts a rainy scene with figures caught in a sudden downpour, highlighting Kuniyoshi's ability to capture the mood and atmosphere of everyday life in Edo-period Japan. The print's composition and use of perspective create a sense of depth and movement, while the delicate lines and vibrant colours demonstrate Kuniyoshi's technical prowess. "Woodblock Rain" is a testament to Kuniyoshi's artistic legacy as one of the most influential artists of his time.

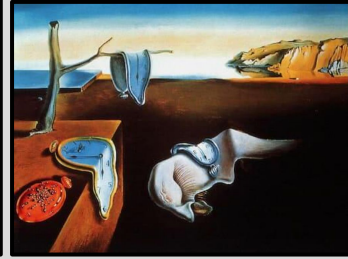
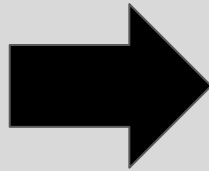


Salvador Dalí

I chose Salvador Dalí for my artist study because of his unique way of showing dreams and the unconscious in his art. By 1929, he had developed his own style with famous symbols like melting clocks and burning giraffes. His skill in painting made his surreal images look almost real. I find his themes of dreams, fever and religion interesting.



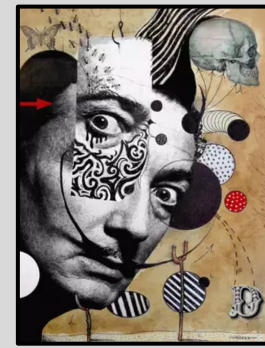
This is a piece I created in photoshop using multiple layers.





Mr Man series by Loui Jover

I chose Loui Jover because of his distinctive style and the way he combines portraiture with mixed media. His art often uses old book pages, which gives a sense of history and depth to his work. I'm drawn to how he blends abstract elements with realistic faces, creating an emotional and thought-provoking atmosphere. Jover's use of ink and watercolours also adds a unique texture and feeling to his pieces which I find really captivating. His work is bold, expressive and has a strong visual impact, making it a great choice for my project.



This piece was inspired by the Mr Man series created by Loui Jover. For this piece, I used cut out scans of orange paint splatters for the background, and for the man in the suit I used a first-hand source (my dad).



My signature was scanned on the printer and pasted into photoshop, then I separated the two signatures and put each in one corner of the piece.



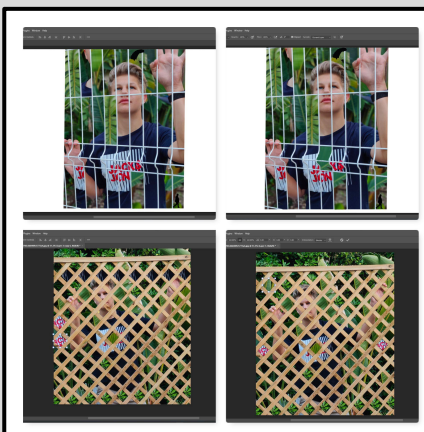
Tom Paulmann



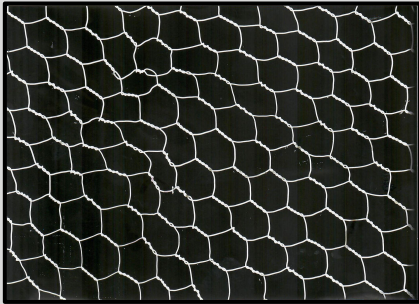
Tom Paulmann

Cutting and pasting
gaps and swapping them
to create interesting
patterns and textures.

Photoshop experiments



Dark Room



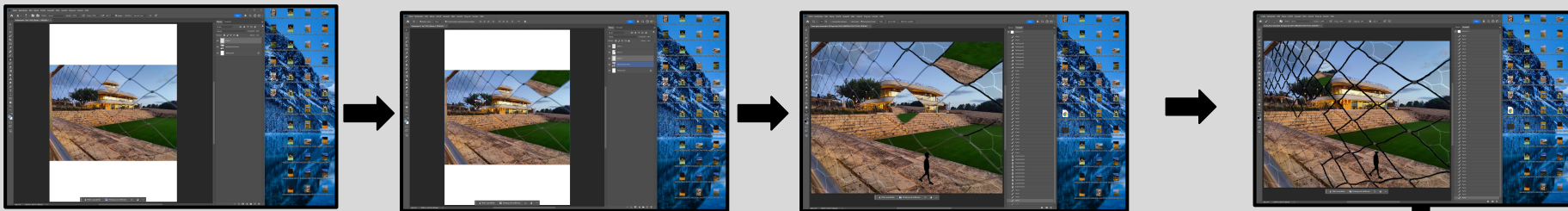
Chicken wire



A bicycle chainwheel



Working in layers in photoshop combining photographs with photograms



Final-Piece screenshots

