

FINAL ARTWORK



Materials used

Foam balls, simulated moss, mesh clothes, textile clothes, organza, plastic hoses, hot melt adhesive, spray paints.

This page shows both the parts and the whole of the final work, and you can get a detailed understanding of the design and process of the entire work.

Planting process

I bought a mushroom pack and recorded the growth of mushrooms for nearly a month.



SKETCHES ABOUT MUSHROOM



I sketched some of the mushrooms to get a better idea of their structure.



MORE SKETCHES

I found as many real photos of different mushrooms as possible to sketch so that I could have a deeper understanding of the appearance of mushrooms.



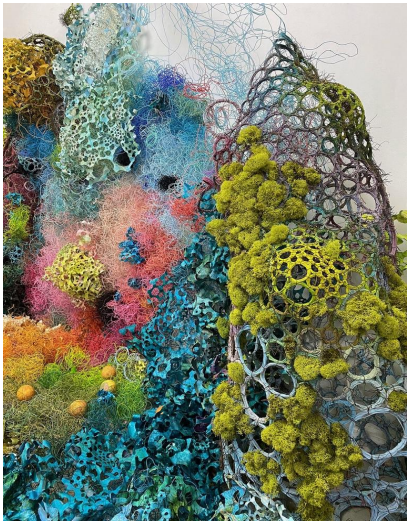
Even though they are of the same genus, they all have their differences. The mushrooms shown are chicken mushrooms, shiitake mushrooms, oyster mushrooms.

PAINTING & MATERIAL

This is a colored lead A3 painting of a mushroom, with simulated moss and yarn on the border to simulate the real growing environment of the mushroom.



ART INFLUENCE



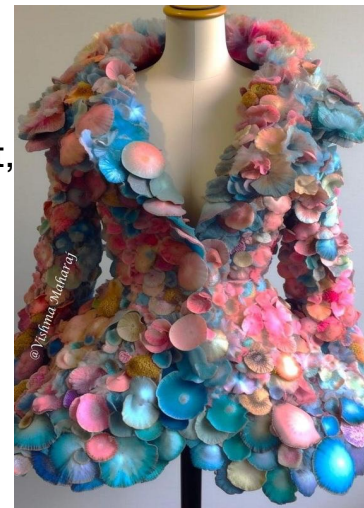
I wanted to mix the illusion of the colors that people get when they eat poison mushrooms with the shape of the mushrooms for inspiration.



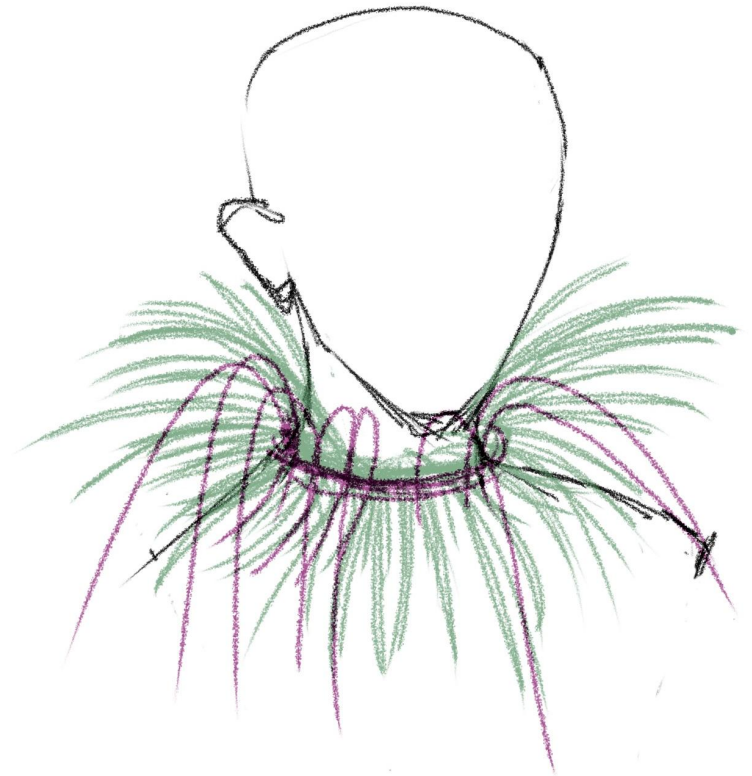
This sculpture is from SHINIQUE SMITH.



So Here are some of the references I found on pinterest, They all have rounded shapes and exaggerated colors.

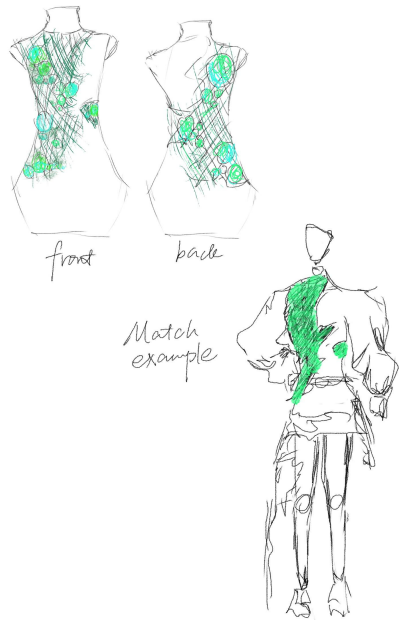


ART INFLUENCE



This is the reference I found for the neck decoration and drew the design for the actual production.

DESIGN DRAFT



The color I chose is a blue-green tone, partly to combine with the natural growing environment of mushrooms, and partly to fantasy the intoxicant world. The various foam balls are the associative expression of different varieties of mushrooms, and the grid under the lining is the structural abstraction of the cap and mycelium. The neck decoration mimics the spore eruption of the mushroom at maturity.



FIRST DRAFT

At the beginning of my design, I drew the first draft to lay the foundation for my model production. However, as the production went deeper step by step, I found that this draft was not enough to reflect details and I had further understanding of the theme, so there were still many things to be added and modified. I drew the final draft. It reflects more details the distribution of foam balls, color matching and interlining colors, as well as the neck embellishments I drew based on references.

FINAL DRAFT



PREPARE & MAKING

I bought a lot of fabric online, spray paint, mesh cloth, foam balls for the exterior. I put them together randomly and made a lot of finished products as backups. The picture shows my spray painting process, as well as various combinations.



Spray paint the foam balls.





These are photos of me making a sample of white cloth, and later I will add linen to the white cloth to enrich the visual effect. Here shows the first two steps, making a foundation for model.

PROCESSING



DETAIL PRESENTATION

In this step, the edge of the fabric is sewn with mesh . It is also my own thinking with the picture of spore spraying after mushroom ripening, giving people a hazy feeling like fog gauze.



A photo of me making the model.

These photos were taken when I combined the model from different angles, showing the details of the work as much as possible. They all used different paint colors, fabric types, spray painting methods, combination methods, to express my combination of different mushroom forms and growing environments, as well as different degrees of intoxication after hallucinogenic imaging.

DETAIL PRESENTATION

OVERALL DISPLAY

These are photographic works of the whole in the middle and late stages of the model. It's a complete display of my work, from the lace of the base to the foam model and the grid of the base. But in the end I decided to add simulated moss on the backing to enhance the theme and give it a more contoured look.

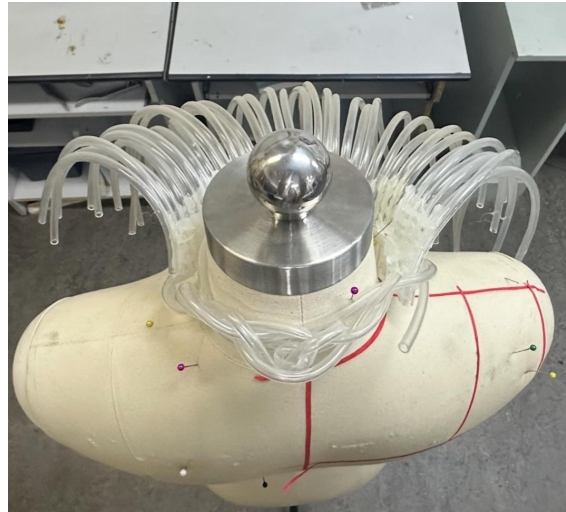


Front

Back



STEP 1
Apply Glue



NECKLACE PROCESS

STEP 2
Stick Pipe



These photos show how I made this neck decoration, First applying glue to the pipe with a hot glue gun, then attaching the next pipe and adjusting the shape until the total length covers the entire front of the neck. Finally, use the longest hose to connect and tie.

STEP 3
Rearrange

