

Marking standards for

**Cambridge IGCSE™ / IGCSE (9–1) / O Level Art & Design
0400 / 0989 / 6090**

Component 1

Example 1

		Mark
AO1	Record	21
AO2	Explore	23
AO3	Develop	23
AO4	Present	24
Total (max mark 100)		91

Tonal drawings with pencils to
show different textures

A woman's face

Tr
Vi
to
bu



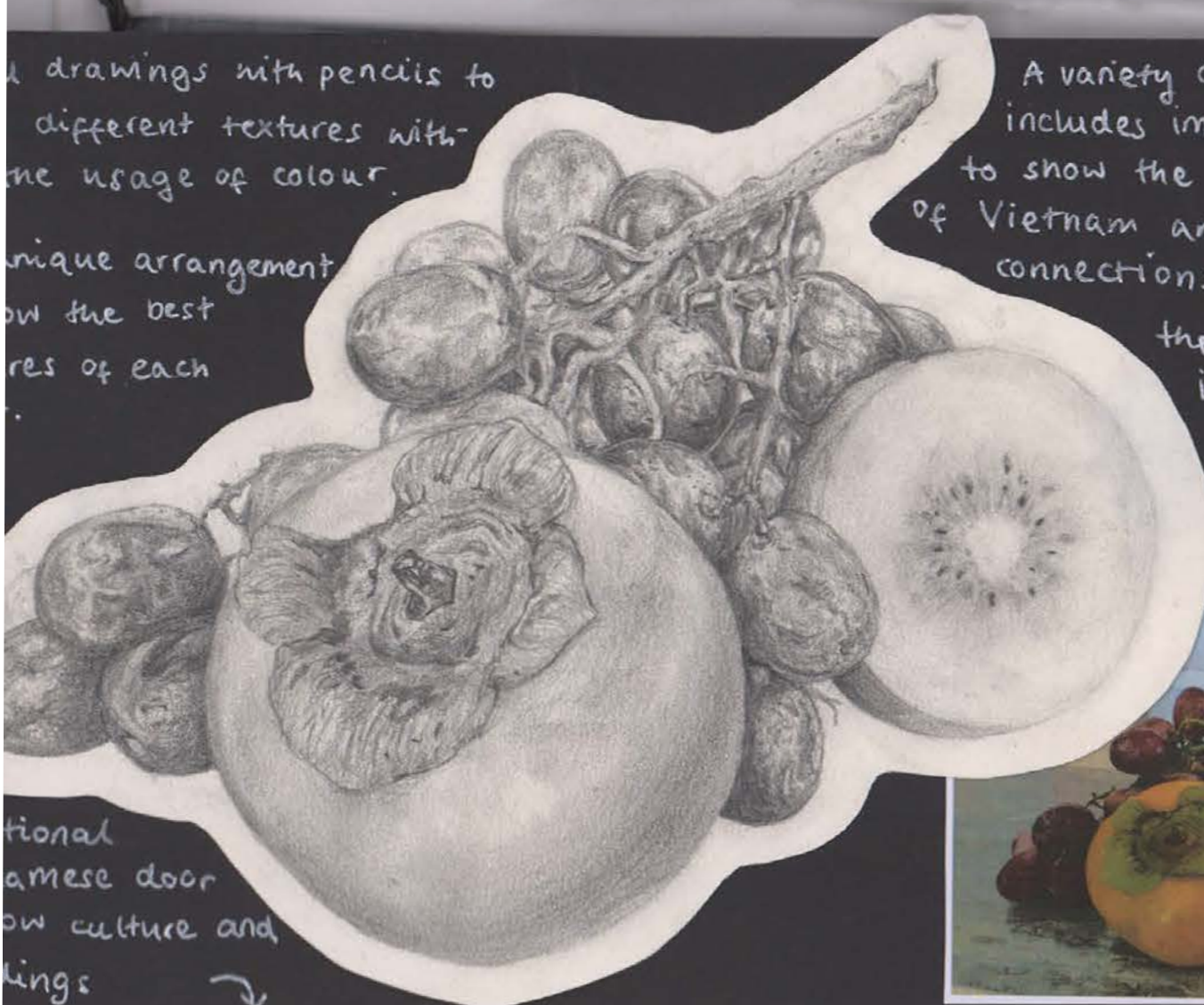
drawings with pencils to
different textures with
the usage of colour.

unique arrangement
on the best
res of each

tional
amese door
ow culture and
lings

A variety of fruits which
includes imported variants
to show the modernisation
of Vietnam and its expanding
connections, especially in
the produce
industry

used the
available fruits
in my house
own photo



Serena Lee

BO

c GZRN0a#aaa"

0000#aaaa"

al"

LIFE IN VIETNAM



The tangled wires show a messy,
almost suffocating and claustro-
phobic nature of Vietnam. It
is a staple of most east-asian
countries due to how busy and
numerous the buildings are. I
wanted to capture this moment
by using contrasting black pen
and snowden paper to also
show its diversity and inter-
connected idea.



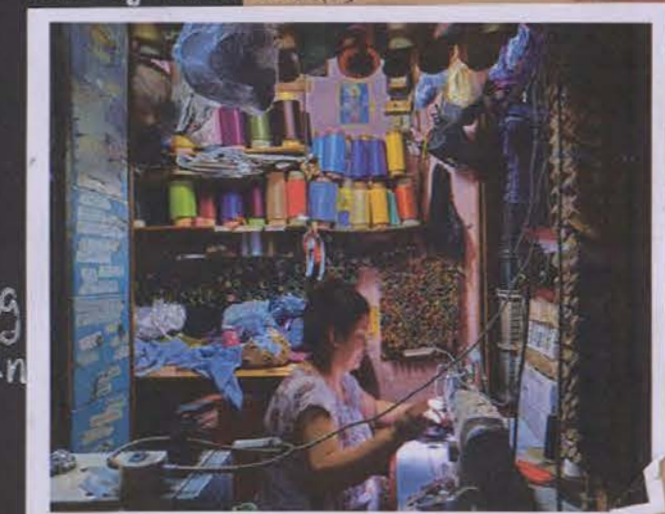
I decided to go for a more
surreal feel for this
piece. The door leads in
to the fruit box to join
both. The fruit represents
the diverse nature of
Vietnam & its tropicality

yellow lady



mind map for possible ideas to do
with life in Vietnam
• fruits, modes of transport, people,
tangled wires & animals.

Photo by Janet Williams



The dichotomy between the
hard-working lady and the
multi-national brand is
representative of inherited
traditions slowly dissipating
as Vietnam becomes overrun
by rapacious, foreign
corporations.



Costa
Dvaretsky
2021
↓

pose
inspired
by his
works
↓



Andrew Hem ↑

The
large
town
over
one. The
feeling of
being diff-
erent.

leads to
another
↓



h
K # 'O
streets
atmosphere
with the pending unknown.

Inspiration
for main
piece

ANDREW Hem

own
photo
↓

can feel claustrophobic



mountain full - Andrew Hem

a pop surrealist artist
to express
anxiety
of Los Angeles
defining his pieces.



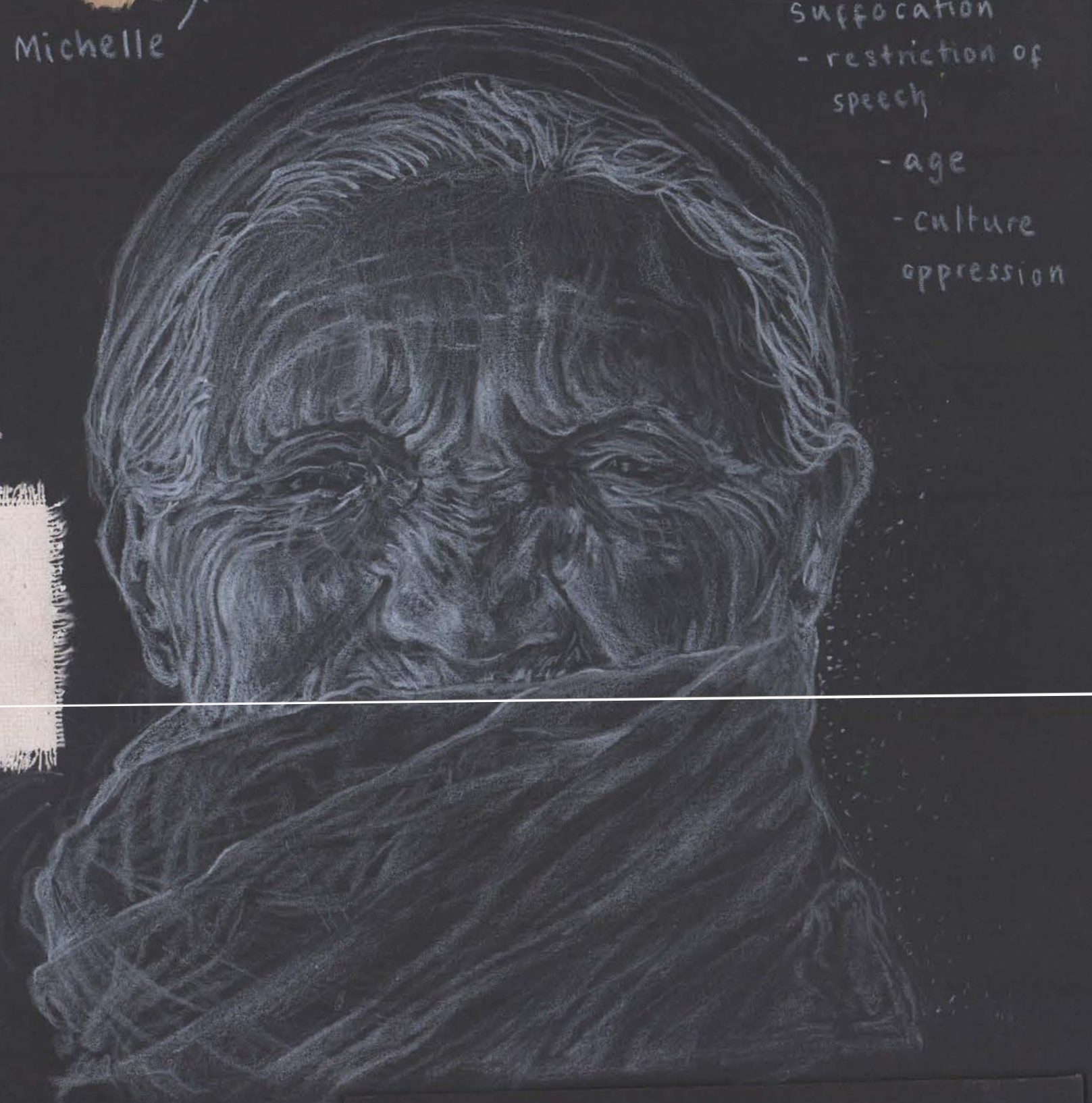
The glass pane



Michelle ↑

the face is kept ambiguous for this piece as it allows the viewer to imagine being in this... incite empathy... also... pres... war... user... of being is...

- suffocation
- restriction of speech
- age
- culture
- oppression

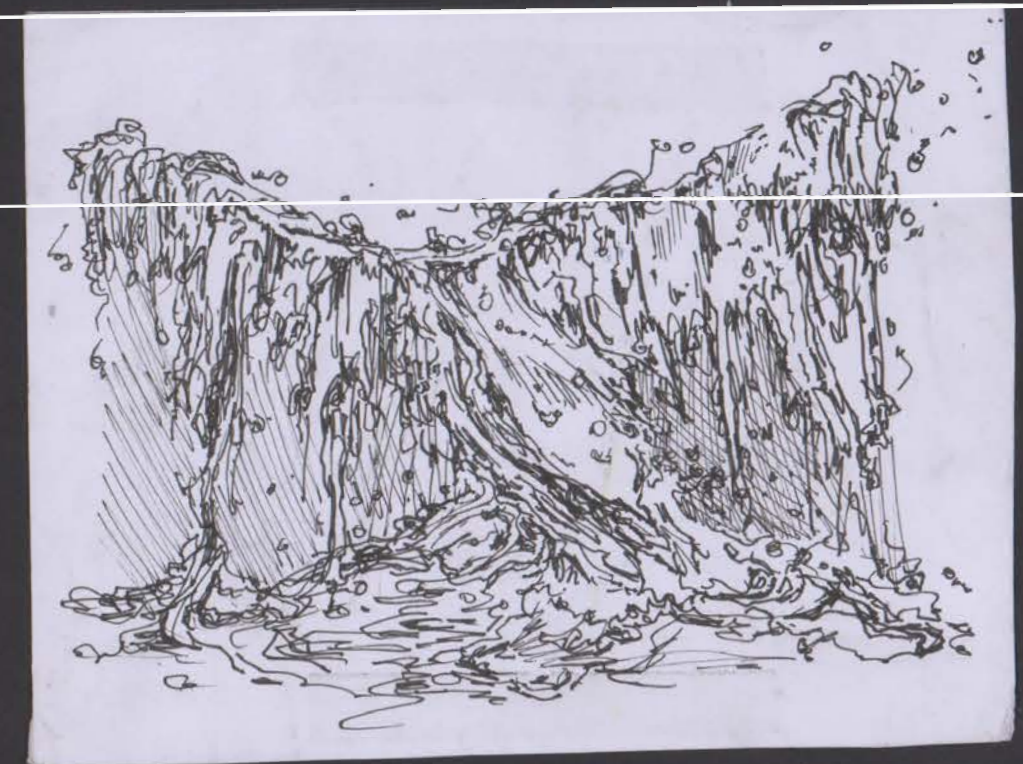


CLAUSTROPHOBIA

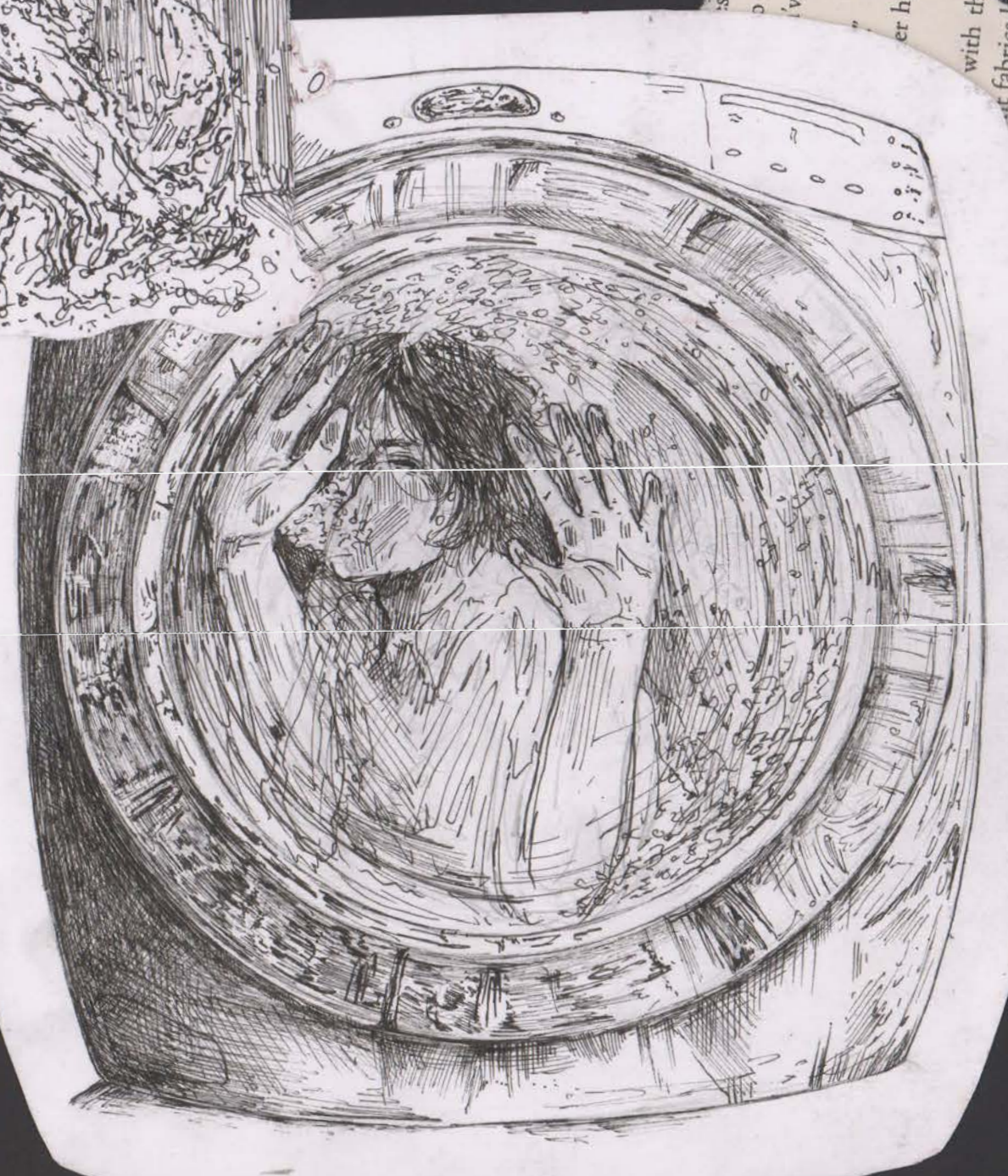


Parallel Universes
Ibai Acevedo

Practice Sketches - flip



This piece was used to represent the act of being trapped with... pressed up... the bubbl... s... perceiving he... showing... has been...



This piece is representative of... freedom... very thin that once... through the... once... downed her with great... the door... a vague inside of the washing machine being a symbol... how one must overcome it by oneself.

freeing oneself



side
right
take
die-
is
and

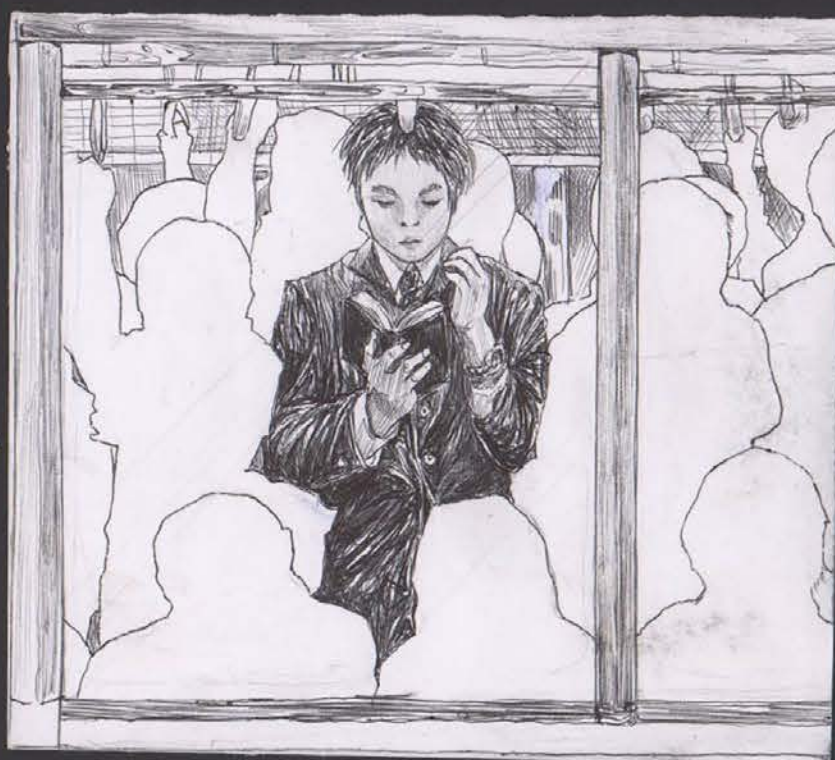


Public Transport

The silhouetted people are the homogenous society, the single man and girl in each piece rendered heavily to create a great disparity between these figures and a generally white & blank crowd to depict the sentiment of isolation derived from individuality. Their characteristics and mannerisms generally indistinct, showing that even those integrated into society can be nonconformed and have unique qualities.

photo by Alamy

Public transport spaces are spaces where personal boundaries are disregarded - entrapment



thumbnail

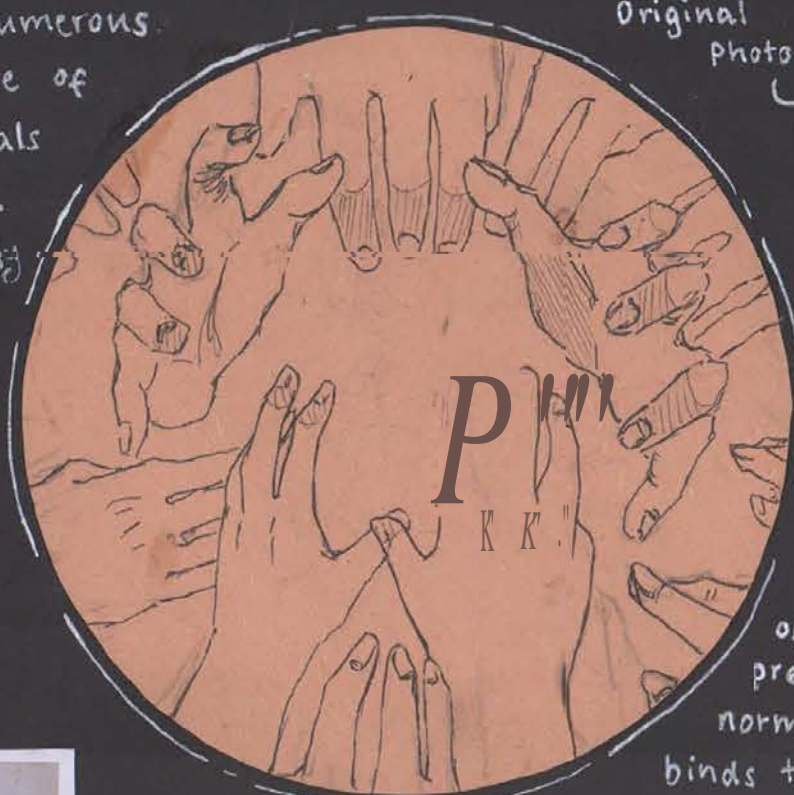


Transcription of 'Cocoon' - Jono Dry



Terunori Yasuda

Thumbnail is a possible idea for a piece where the numerous silhouettes are representative of society's oppressive ideals of an exploitative nature. The hand has a slightly different gesture, a combination of their quite different intent but all regardless, seeking to take advantage of the system, shown by the radical largeness of the hands.



Original Photo



The detailed coloured piece represents enslavement of unique ideas and prevention of breaking the norm. The cling film that binds to the tips of the

fingers attempting to grasp to escape, symbolism for how society monitors the accepted acts and oppresses those which pose a threat to the current system, the monotonous texture of the cling film contrasting with the multi-coloured, diverse and mixed ideas.



BOARD 5

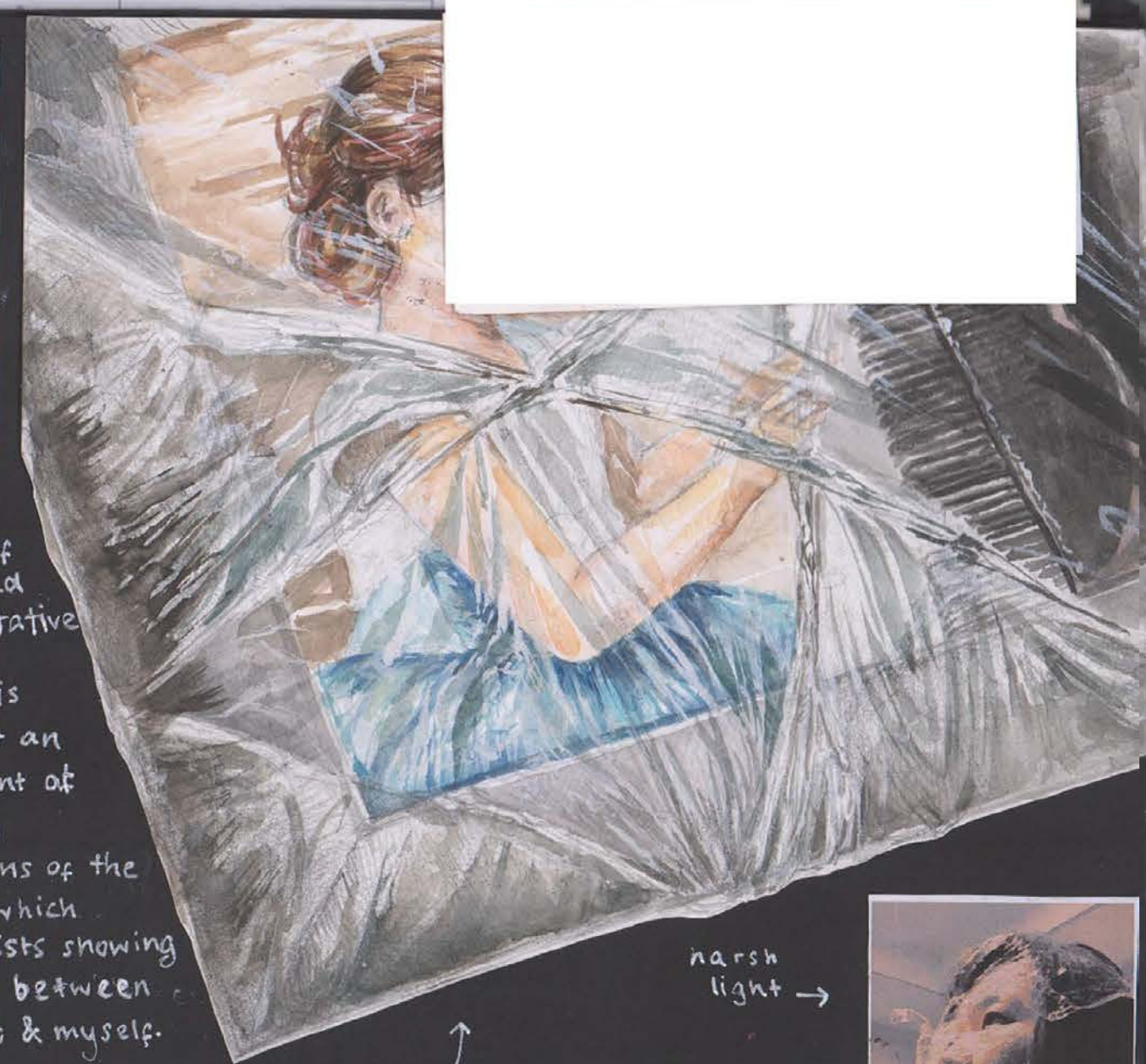
DEVELOPING - IDEAS

ENTRAPMENT & OPPRESSION



Relics of the past

The photograph framed of my younger self, wrapped in cling film is representative of my emotions towards piano since young. It is about how I always felt an obligation to be proficient at playing due to familial pressure and social norms of the middle class. The film which darkens around the wrists showing a physical disconnect between the piano & myself.



harsh light

washed water colour effect - faded along with memories

Maria Teicher



digital manipulation
→ contrast
→ darken
→ saturate

Her works inspired me to recreate my own photos, I wanted to create detailed and shocking imagery which prompted me to use clingfilm as a suffocating and metaphorical medium.

Photography



Lips

The cling film which wraps the lips tightly is showing the silencing and restriction of speech. The clear nature of the cling film, painting a facade of free speech while it muffles words in reality.



cropped / zoomed photo of lips (original)

Inanimate Objects

The bear was an exploration of inanimate objects and how it could possibly be integrated into my future pieces as an extended metaphor.





BOARD 6

Serena LEE

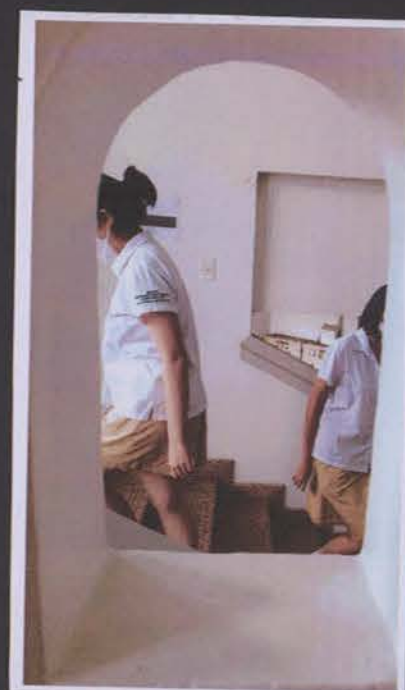
DEVELOPING 2 IDEAS CLAUSTROPHOBIA

- Exploration of different mediums
- Further refining coloured techniques
- Identifying ideas for the final piece
- Synthesise thoughts



Secondary
ere used to
different forms of
mixture of the two to make diverse
om both daily surroundings and those
aters. This represents the
g sentiments and
that has
into wh
today

This resolved piece is in prisma color, of my friend, pressed up against a window of a train. It depicts the pressure of people in societies to conform to normality and retain a monotonous life, hence the setting of public transport. The varied colours and tones used to contrast with the theme of conservatism and how the continuous containment of uniqueness ultimately leads to an entrapping circumstance.



This fineliner piece is a less direct representation of claustrophobia. The focus is on the figure in the middle, where she is surrounded by vague silhouettes of passerbys on a busy staircase. Each of the silhouettes contains diverse forms of water, showing how every individual are born with the same basis; however each experience creates distinction. The combination and intimacy creates a sense of invasion of privacy, which is where the tension and claustrophobia is derived from. A purposefully ambiguous exploration to show how versatile and widespread the theme of claustrophobia is.



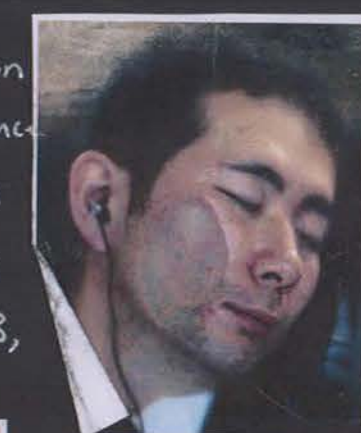
Own photography
inspired by the
condensation in
Michael Wolf's photos



this
imagine
to to
a stronger
pose is
how
become
of glass
able to be

tion
tion of
ge
ulture
pression

Michael Wolf's photography series was the main inspiration for this piece, a recreation of one of his photos, to reproduce the claustrophobic and distorted nature of his subjects - a calming tension. The tones were purposefully saturated & enhanced to connect more to my previous artist on board 3, Andrew Hem and to additionally create a greater distinction between the dark background. Their expressions contradict their position, fabricating an image of a dystopian, subservient society - the pathetic fallacy of the condensation, creating a moody feel to further enhance this effect.



Michael Wolf
- Tokyo Compression
A photo series which
depicts crowded
trains in Japan,
unique to Asia



BOARD 6

Serena LEE

There were a few other photos I took before taking the photo that was used for my final piece. Although they are decent photos - I found that they weren't as good as the one I had. One had blocks of aggressive reflections, a lack of detail in the folds.



This enlarged, fully coloured drawing of the eye of my final piece was to

practise getting the skin tones and proportions correct. I wanted to ensure that there was simplicity

in the eyes with a smooth but quite textured skin. I also examined eyelashes & strands of hair which added another depth to my piece.



BOARD 8

PRACTISING MY FINAL

I tried to implement & combine the interesting aspects of water & silhouettes into my final piece so I created this one-colour based piece to practise recreating water effects with colour pencils on black card - a cool tonal experiment



real images combined for easier envisioning



I initially sketched my final piece, then I took a photo at a similar angle to fit the perspective that I was going for. I tried digital manipulation with the photo I took and combined it with the window frame of a train or a window to cover large portions of the face as it detracted from the overall feeling of claustrophobia I was trying to invoke. It was a similar case for the 'water silhouettes'. These silhouettes did have a crowding effect I was going for - however I found that the interesting contrast & overload of highlights due to the reflective nature of water took away from the main focus of my final piece. The digital manipulation of 2 of my pieces showed this as there are too many things to focus on. Thus in the end, I opted for a simpler design which still incorporated the aquatic aspects in the form of flat, cold colours.



Black & white filter helps identify highlights & shadows

I wanted to practise the clingfilm around the mouth as it required a different technique compared to the rest of the piece. Essentially, the area around the mouth had larger folds which I tackled by separating the structures into blocks. By using tonal drawing, I was able to identify the relevant blocks which helped with creating the final piece.



I wanted to draw a previously taken photo to practise the basic technique as well as an enhanced colour scheme which focuses heavily on the darker, rouge tones.



I went through a similar process of choosing the correct image with the hand. I initially chose a previous photo I had taken for board 5 for the hand of which I created a refined study of - however, I found it did not reflect my themes of claustrophobia and entrapment well thus I took a myriad of different photos. In the end I chose a photo with better lighting as I found the photo had

an interesting angle which enhanced my theme. I also wanted some contrast in the textures within the clingfilm so I was looking for some loose and tight areas. The photo I chose for my final also has hints of cool tones which

I printed my thumbnail onto a sheet of acetate which I could overlay over a pen drawing of a frame/window. I wanted to experiment with larger and landscape pieces which was interesting & clarified my vision

