

Marking standards for

**Cambridge IGCSE™ / IGCSE (9–1) / O Level Art & Design
0400 / 0989 / 6090**

Component 1

Example 5

		Mark
AO1	Record	11
AO2	Explore	11
AO3	Develop	14
AO4	Present	15
Total (max mark 100)		51



SC1434797

Final



PICTURES



Progress Picture

1)

2)



3)

My Final Artwork
is the combination
of all my artworks.

As in most of them
I have something
related to food
or flower. so I have
combined food and
flower to make my
final artwork.

Prisma Color with
Acrylic!



INITIAL STUDY



In this painting, I have done the arm and the flower in a realistic way and the hand with stippling. I used different types of paper for the background.



28.5g 1.0 oz
959



NTIAL

STUDY



Paper for the background
Painted a part of the
arm and foot
a real

In this eye, you can
see the horror it has
gone through. I have
used coffee as the
main medium and
water color for the bg.





ARTIST

STUDY

watercolor



like doing this
I liked doing
the texture for
the background

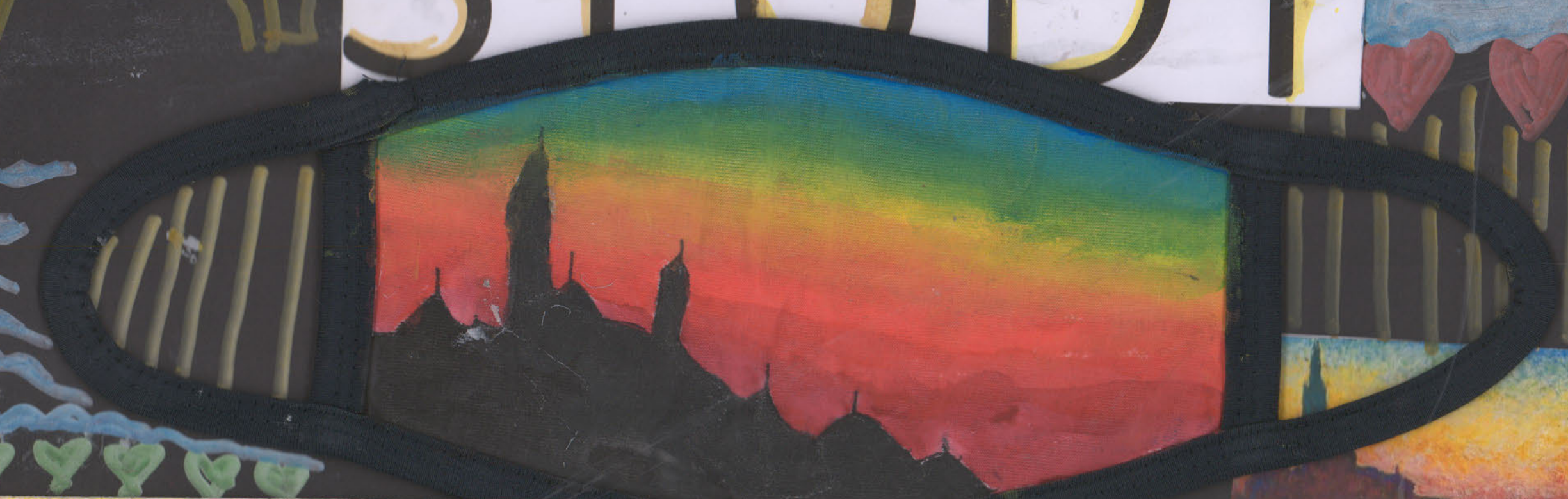


I have done
this artwork
in Prisma col-
or and really
allowed me
to see how
to merge the
color and dif-
ferent median
allows you to
merge.



working at
drawing you
can see that

ART STUDY



In this art work
have used color
pencil for the
base and prism
pencil for the detail
this piece of art
gives the person to
Art Work

by:
Nicola
gray



DEVELOPMENT OF IDEA

PALETTE KNIFE WITH WATER COLOR ①



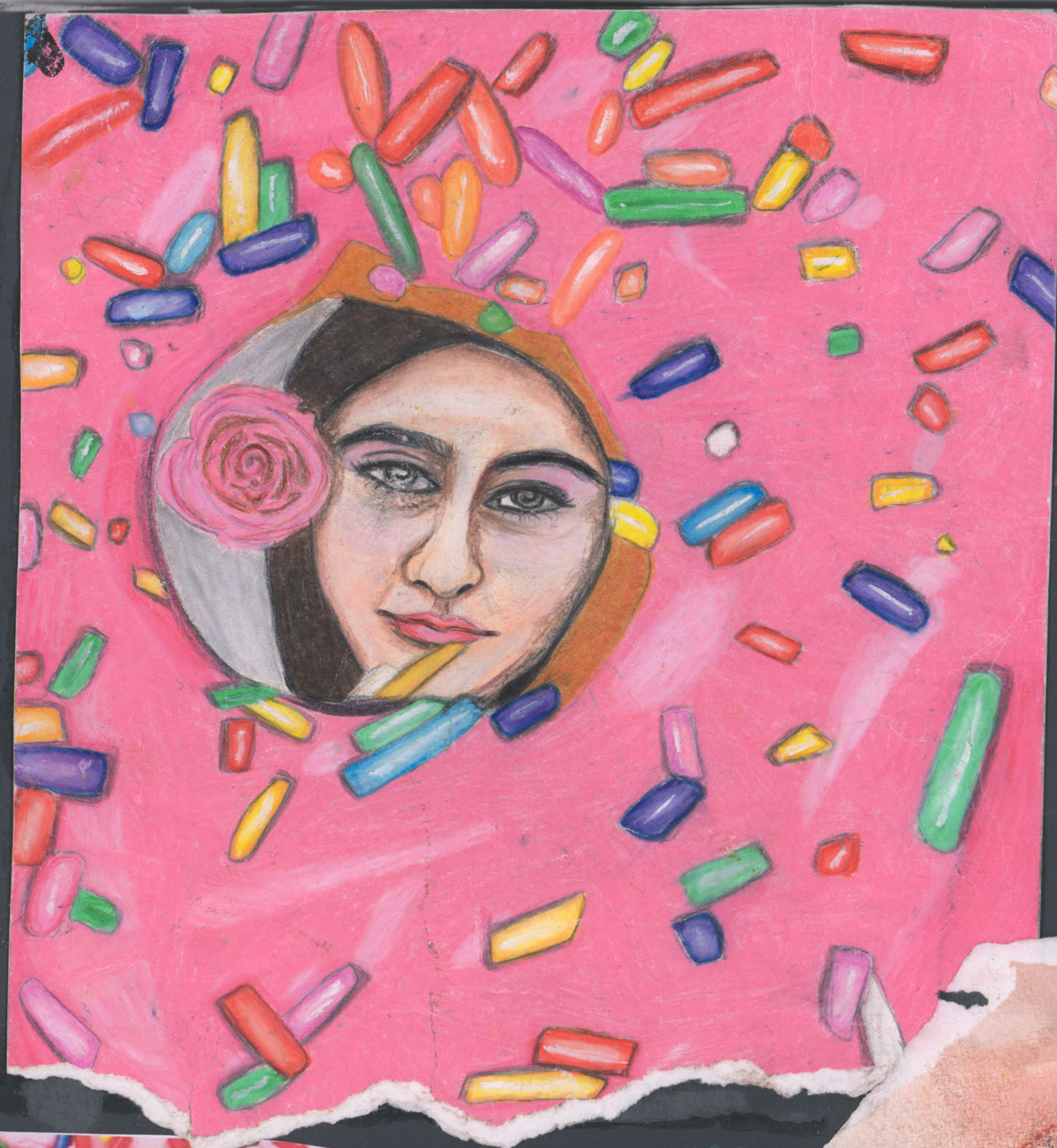
first idea for this artwork was monochrome but after I finished my drawing I came up with a plan that I should make flower around it to make it interesting. For this artwork I have used Prisma colors. This artwork shows that a simple thing like flower can be a big part of your life.



I have lovingly worked in to this piece, adding textures and color, and details. I have used water color for the flower, then I have used pallet knife for the skin and then I added the details with Prisma colors. This shows how flowers are involved in our daily lives and how much we appreciate it. Flowers are used for everything from gifts to decorations.

Reference picture





Donut Art

PRISMA
COLORS



For this art work I have taken my picture and have edited it between the doughnut circle. For removing the background of the doughnut I have used the www.remove.bg website and to edit it I have used www.pixlr.com. For the medium for this artwork I have used is Prisma colors. I have used different shades of pink for the flower and doughnut and for the skin color I used peach pink black and red and for the sprinkles I used different color and then added details with black and white

The medium I used for this piece is water color and I have used prisma colors to add details. I have used the same picture of the doughnut I had from before and edited it on the eye using www.pixlr.com



PRISMA COLOR

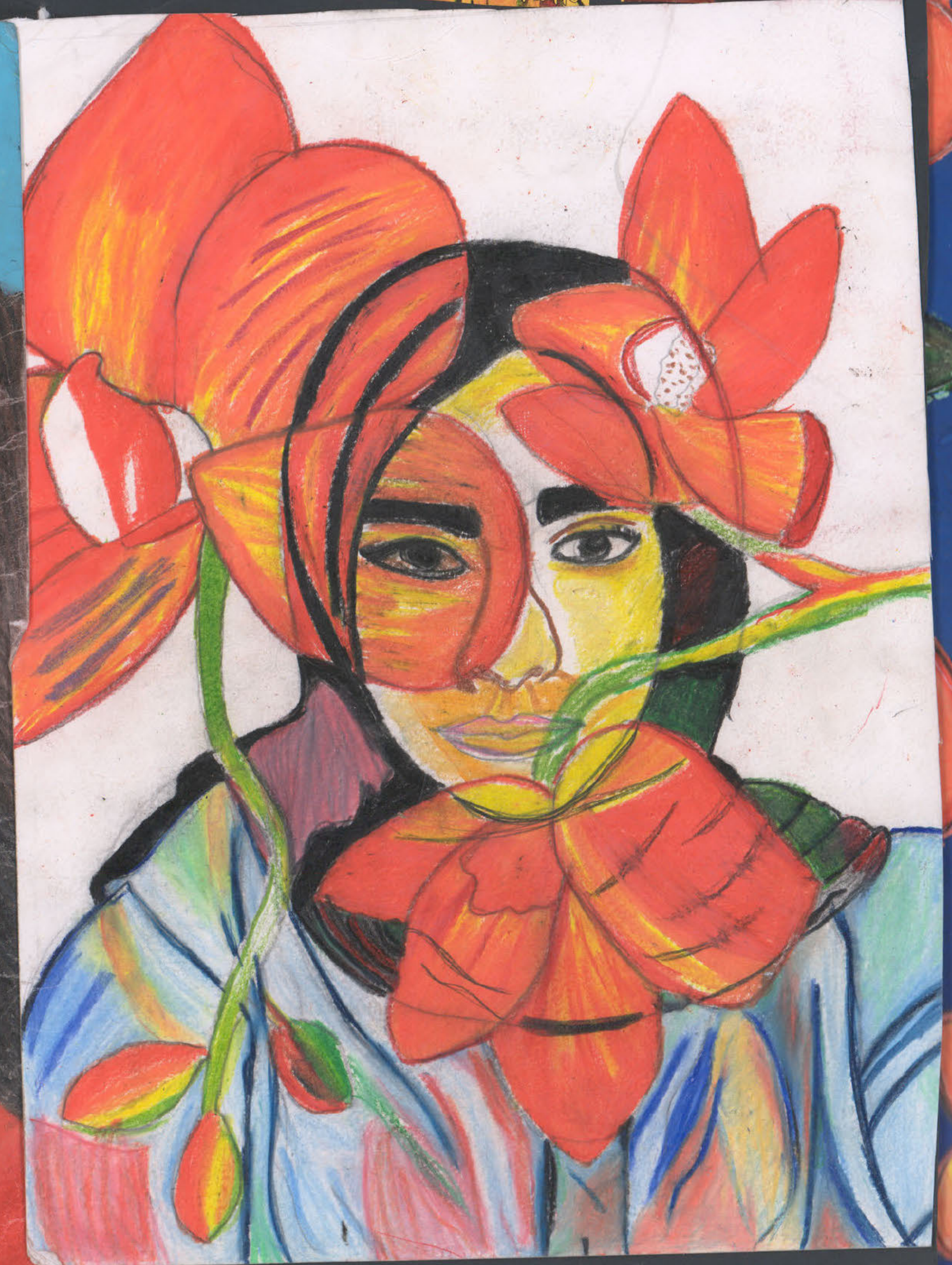


In this artwork she is staring into the gumball machine craving it from the inside. I have done this artwork with prisma color pencil. it is showing how badly she wants the candy and she can't live without it.

PRE ~ FINAL

In this artwork you can see the flower merging with the face. It shows how the flower enhancing the beauty of the person. The theme of the work is abstract. The different color shows more beauty towards the artwork.

PRISMA COLOR





PRE-FINAL

Progress picture



reference picture



Alternative picture



In this Art work
I have used Prisma
Colours as my main
medium and added
details with oil pastels
I have used www.