

Marking standards for

**Cambridge IGCSE™ / IGCSE (9–1) / O Level Art & Design
0400 / 0989 / 6090**

Component 2

Example 3

		Mark
AO1	Record	21
AO2	Explore	19
AO3	Develop	18
AO4	Present	17
Total (max mark 100)		75





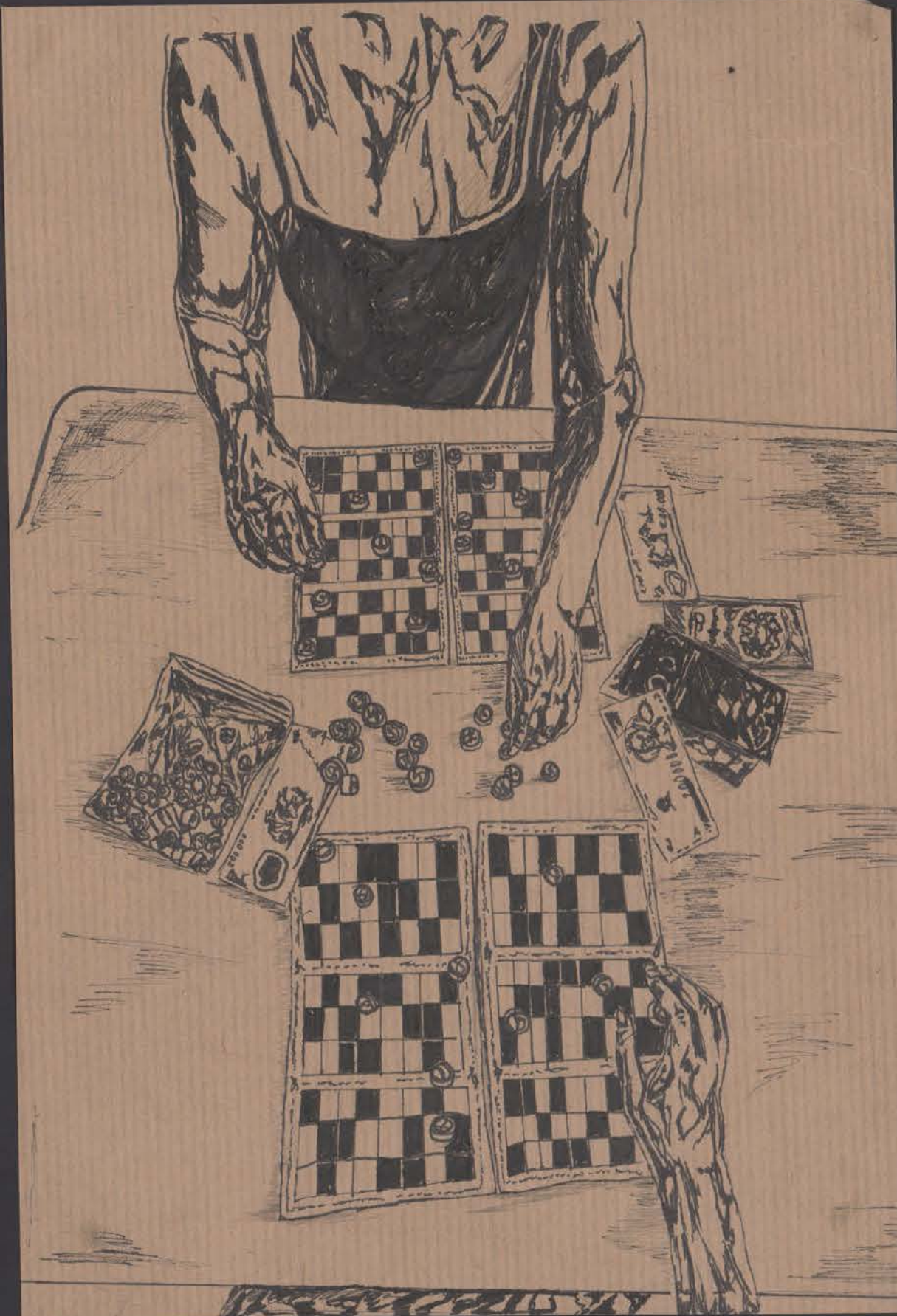
This piece represents the idea of working around the table, showing the reality of exhaustion from working. This is done with a higher viewpoint and shows two people in order to emphasise people around a table.



Another unique idea from different viewpoints. This encapsulates the whole image of a person around the table. From another viewpoint, it conveys 'around the table' more actively.



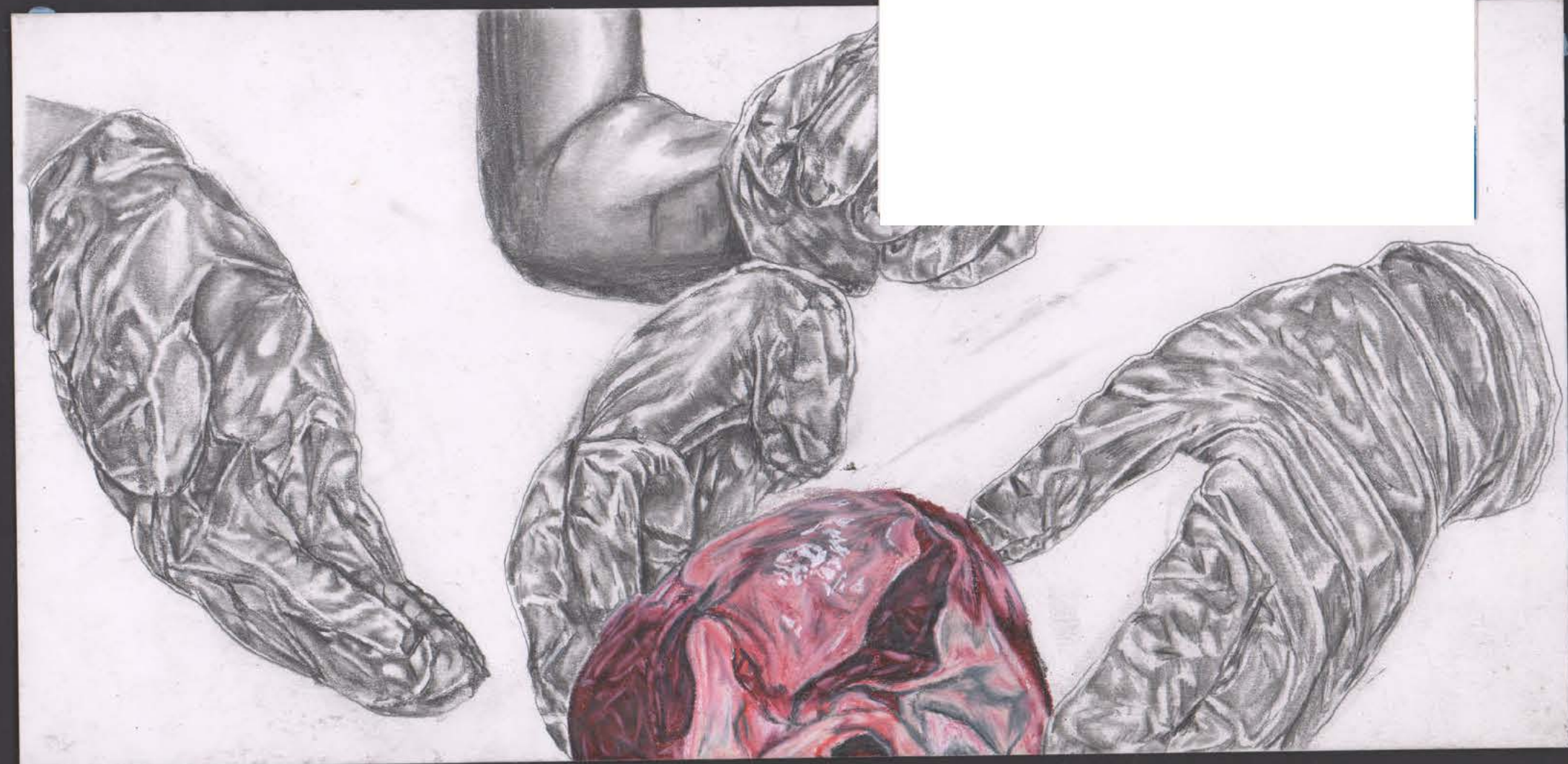
This idea shows working around the table. This depicts the different elements on the table that it needed for the person to work at the table.



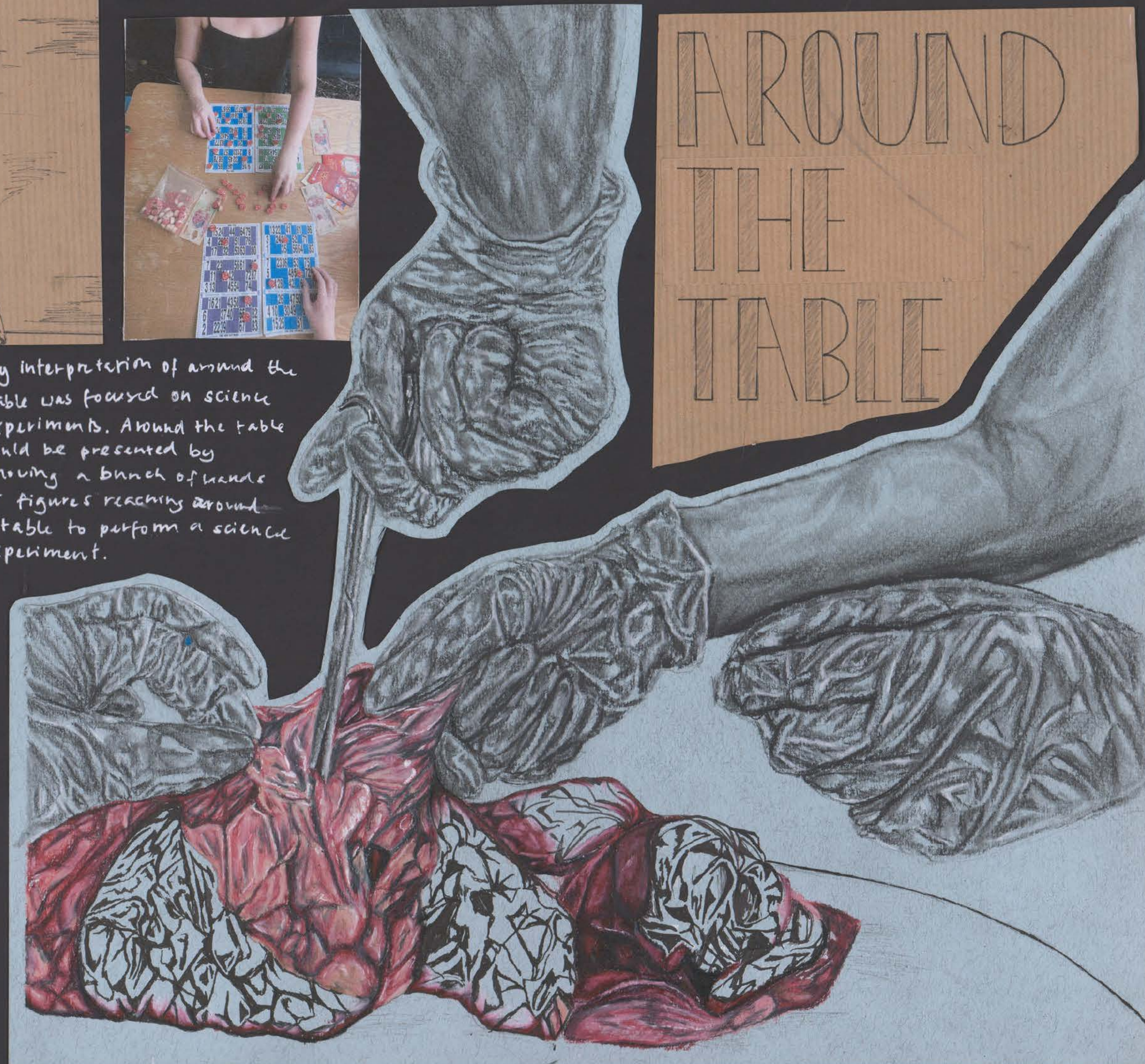
My interpretation of around the table was focused on science experiments. Around the table could be presented by showing a bunch of hands or figures reaching around a table to perform a science experiment.



under a glass table experimenting with viewpoints
birdseye
traditional vietnamese games
board games
eyeline
AROUND THE TABLE
working around a table
Notebooks, Laptop etc.
Science experiments
Sleeping from work exhaustion



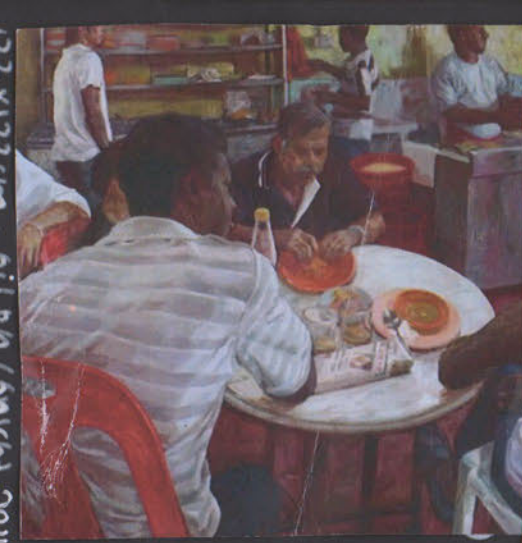
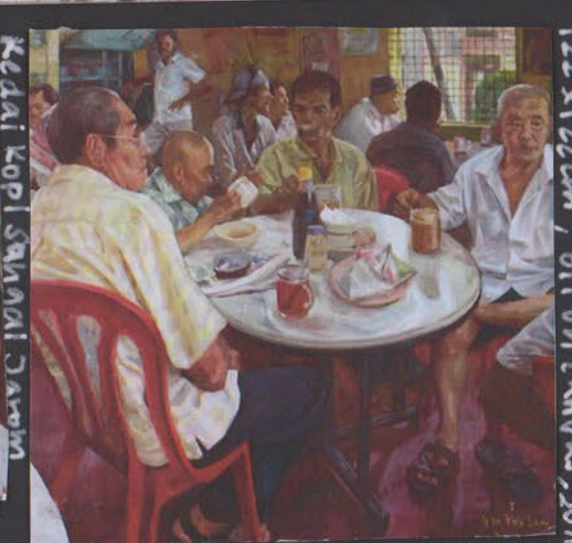
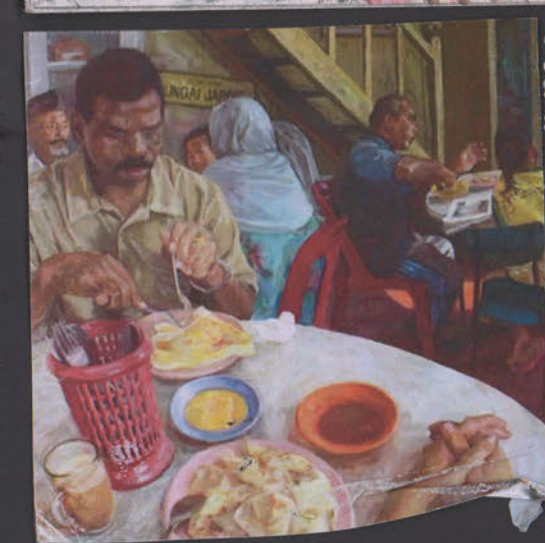
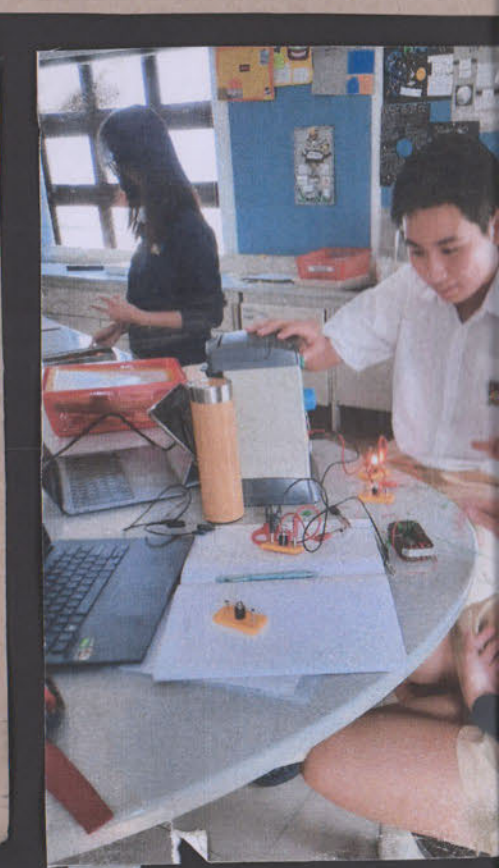
AROUND
THE
TABLE



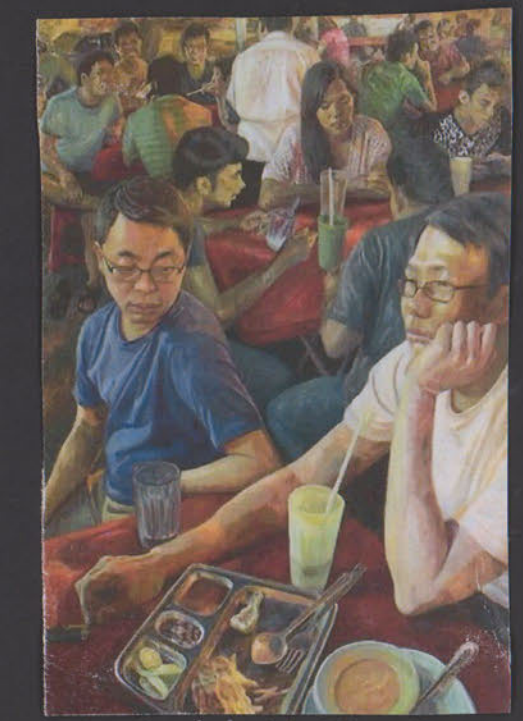


The idea of implementing his 3 piece composition of his work into the pieces has inspired a new way to present the link between the people and school or science experiments

IDEA ①
My idea is to use Gran Chin Lee's style in colours, viewpoint & technique into my own pieces of students doing science experiments around a table. This can help connect the students or people with the environment.

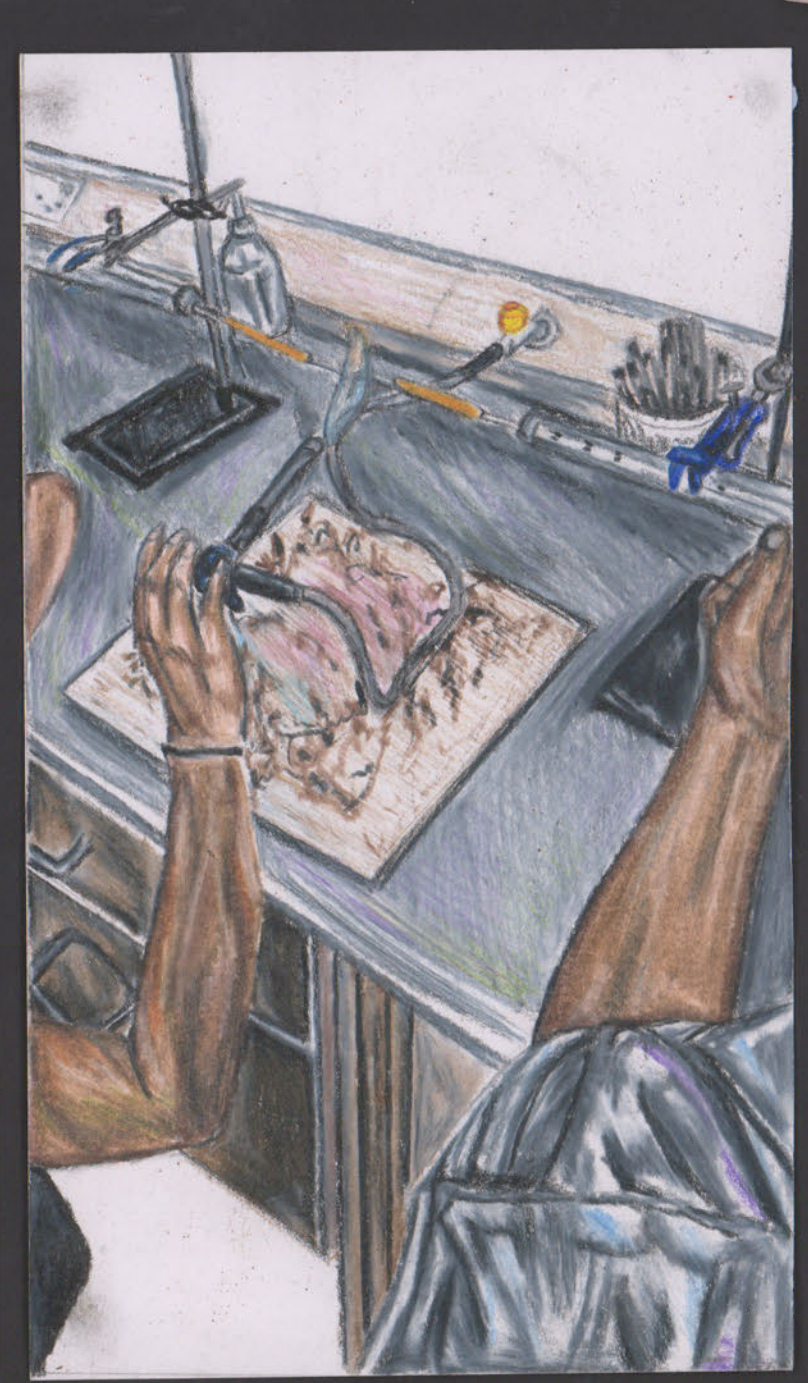
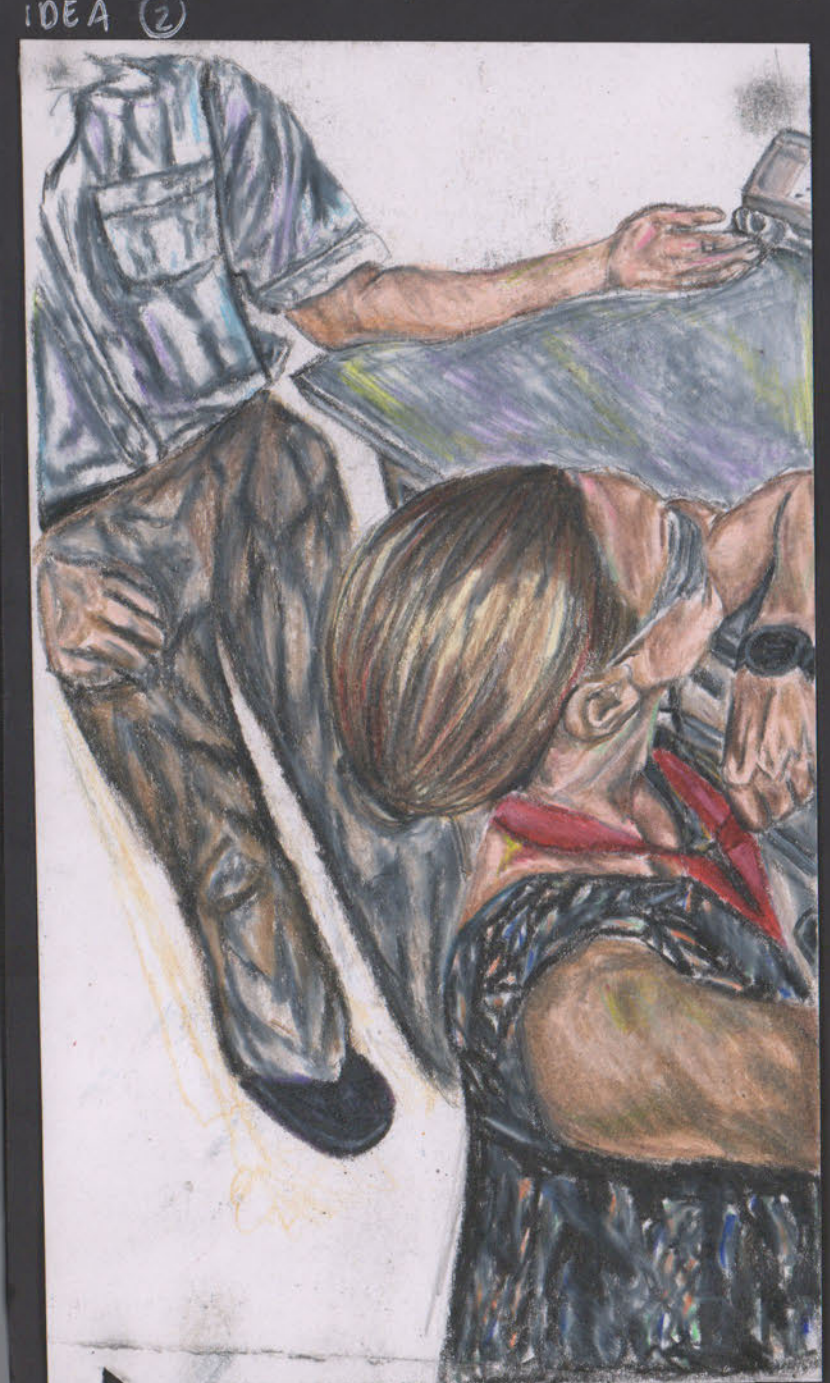


COMPOSITION
The compositions of Gran Chin Lee's works often show an amplified spatial perspective in which he depicts multiracial & multicultural urban scenes shared in spaces, such as street stalls & coffee shops, which are densely populated by characters indifferent to each other. There is rarely empty space in his work to lead our eyes to the different characters to effectively contrast each individual & their expressions.



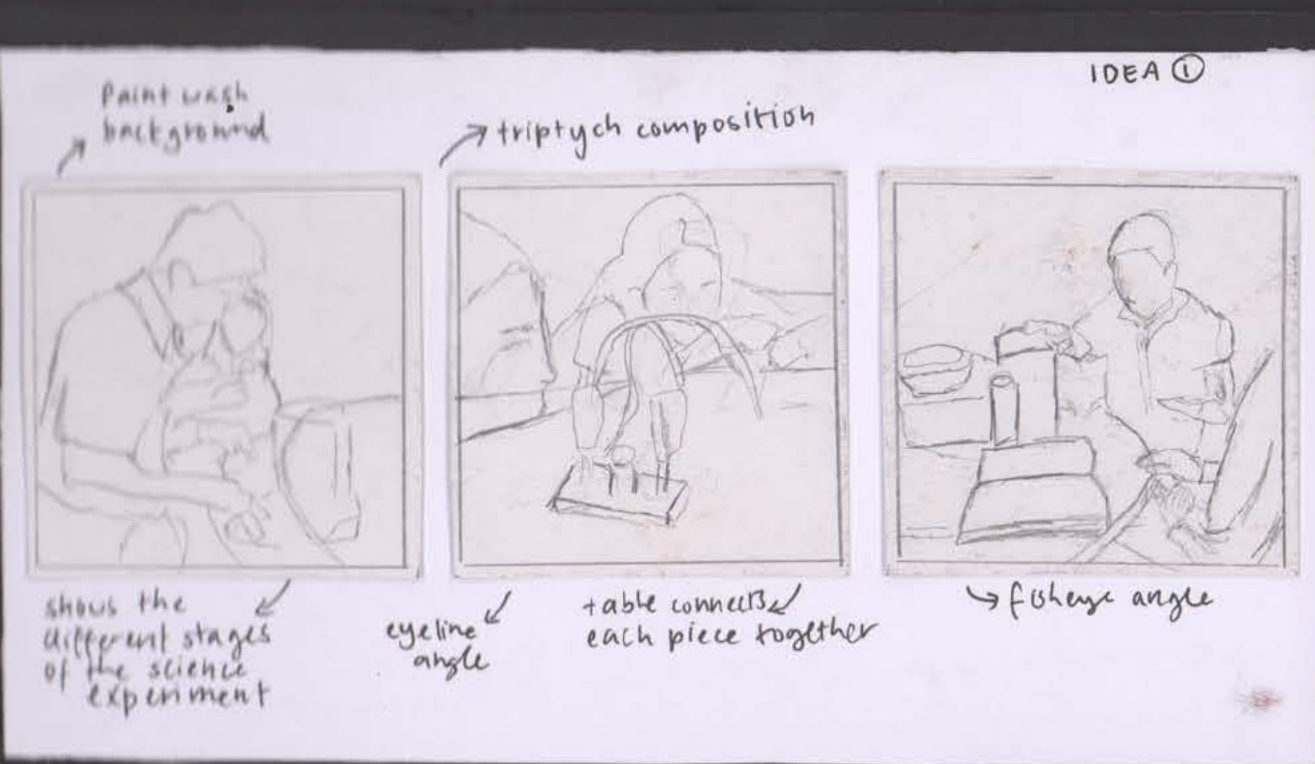
Status Anxiety U, 180 x 120 cm
oil on canvas, 2010

Gran Chin Lee

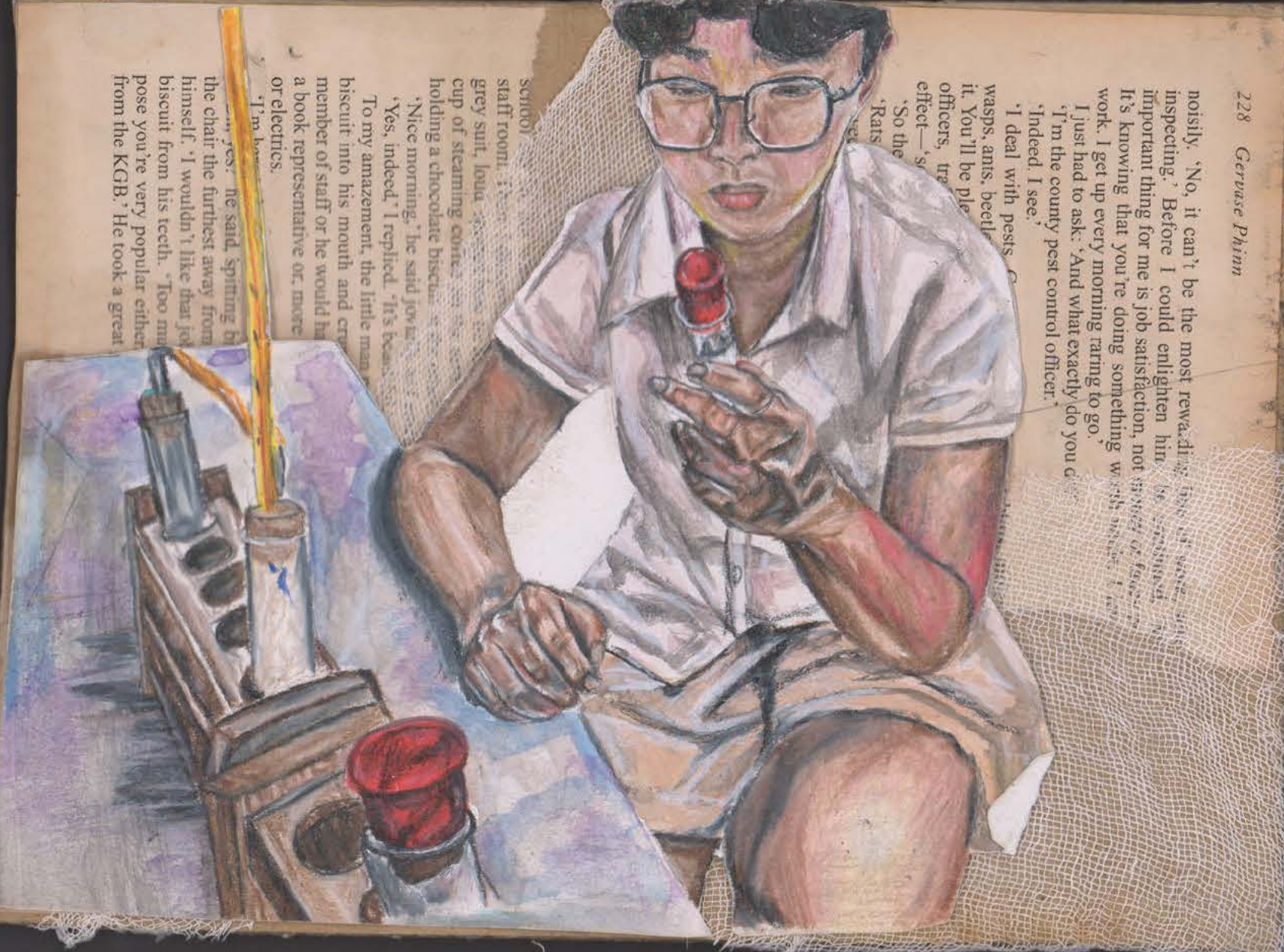


VIEWPOINT
The viewpoint of this work is usually from a front or an above angle in order to capture everything in the busy scenes Gran Chin Lee encaptures. This is in order to understand the symbiotic relationship between people & the surrounding environment.

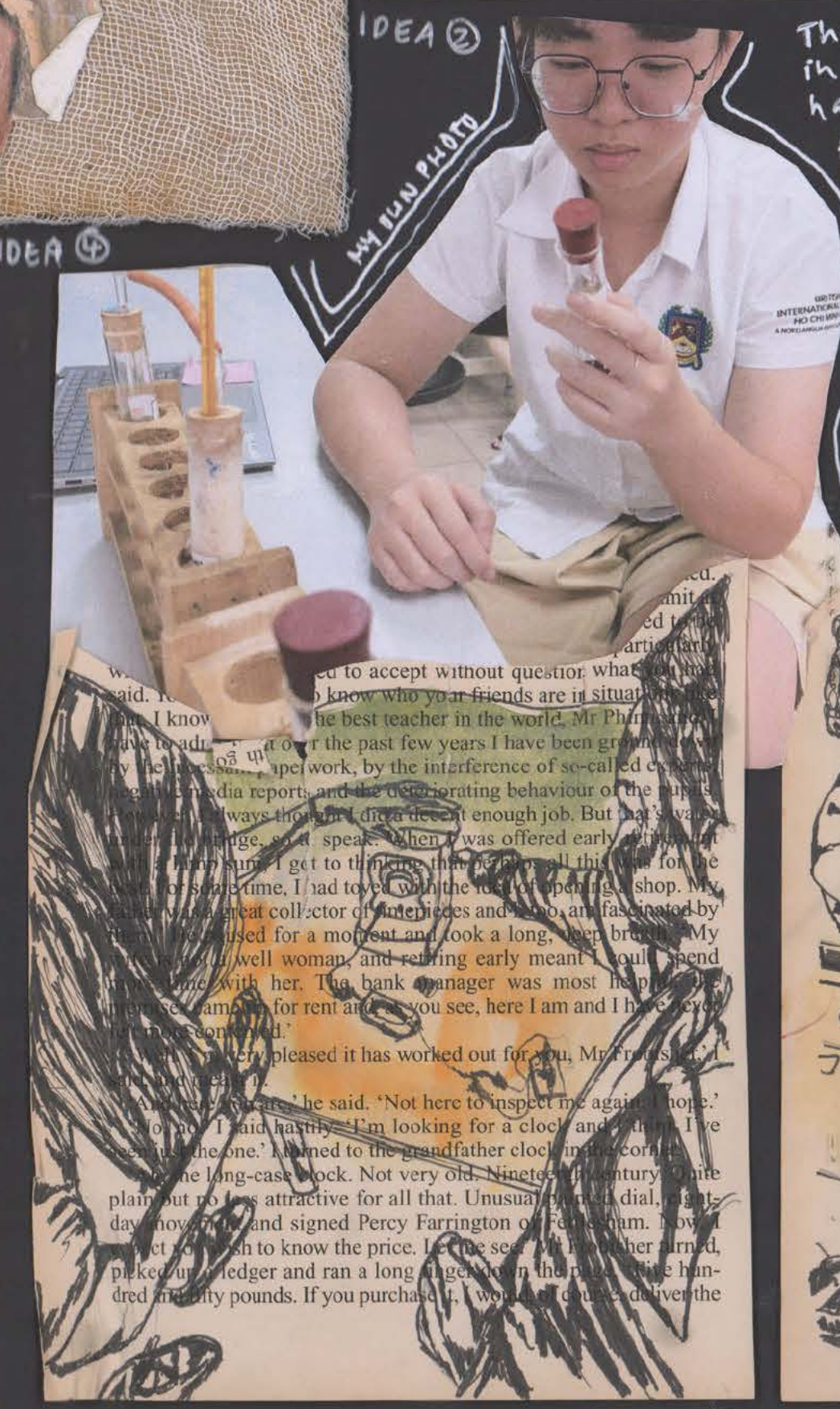
The intention of the artist is to document the ethnic - religious complexities of Malaysia and the boundaries and territories of different ethnic groups, understanding topics that he was not familiar with before, and letting him and his audience have a better understanding of the symbiotic relationship between people and the environment.



people, as well as his well known triptych composition. The back grounds of most pic have been left empty to emphasise the collages and water colour washes. For single compositions, angles have been explored like a fisheye angle to capture as much as possible in a frame.

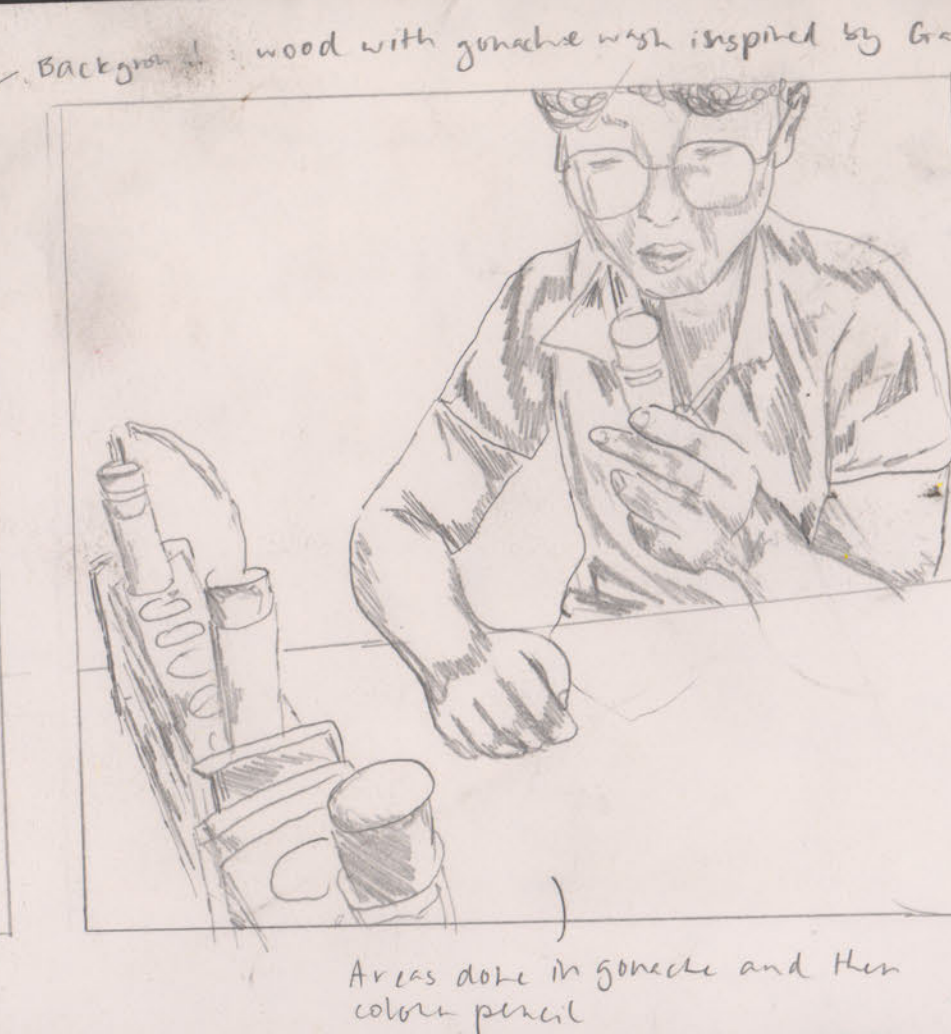
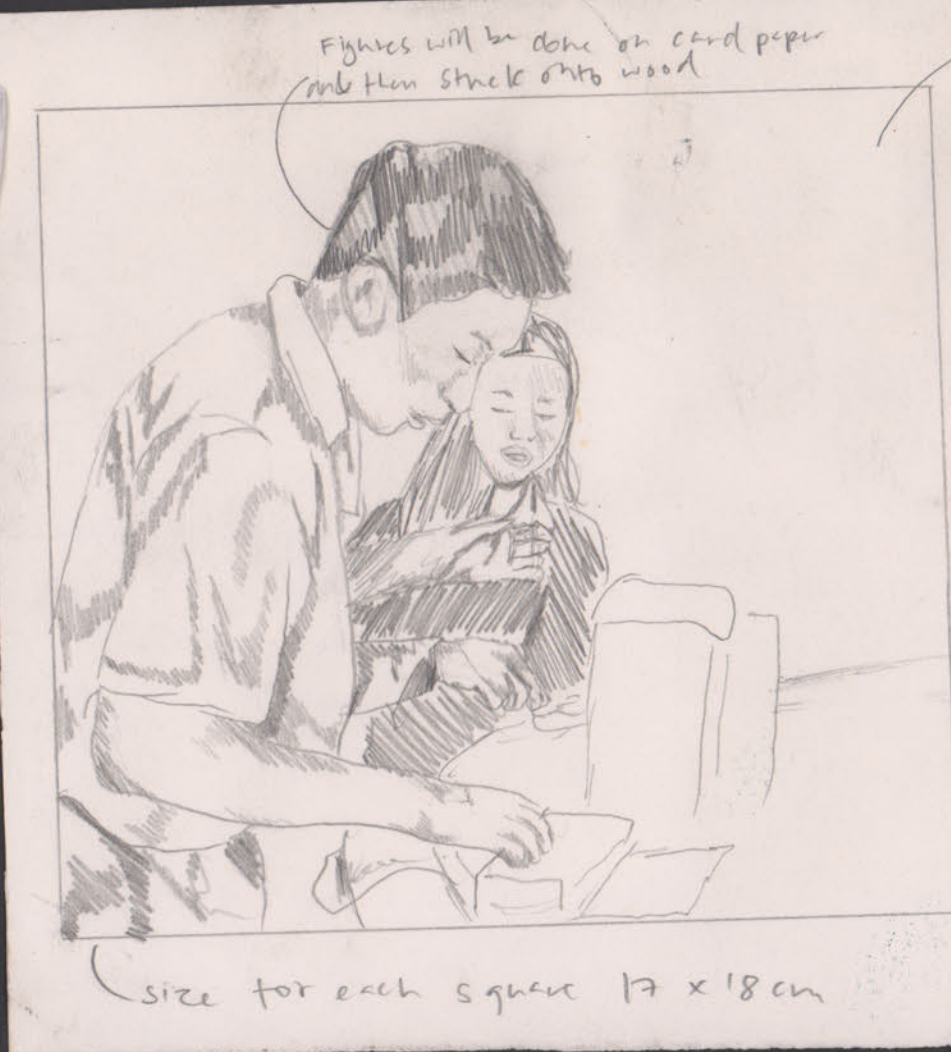


MY OWN PHOTOGRAPHS



DEVELOPING FINAL IDEAS





REFINING
THE
FINAL
IDEA

