

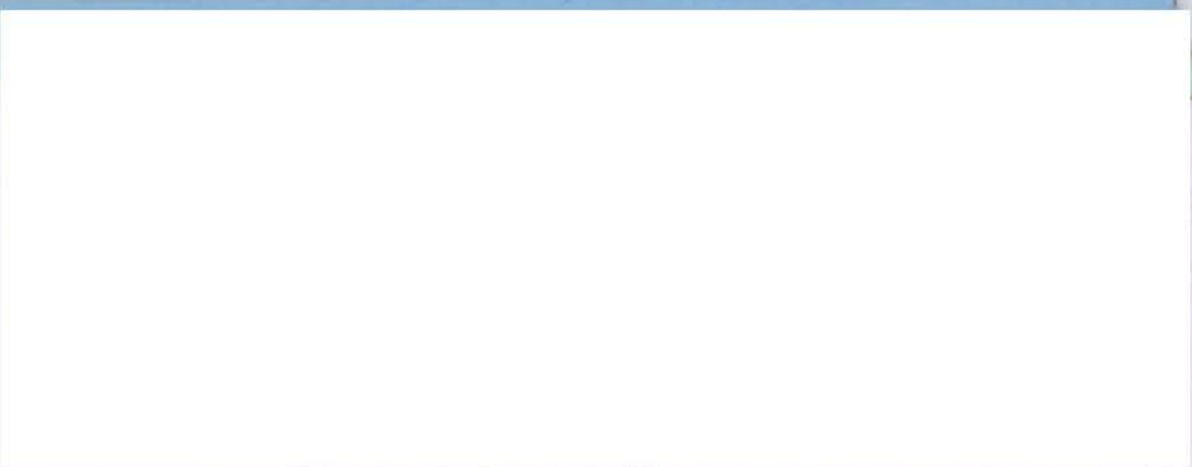
Marking standards for

**Cambridge IGCSE™ / IGCSE (9–1) / O Level Art & Design
0400 / 0989 / 6090**

Component 2

Example 8

| | | Mark |
|----------------------|---------|------|
| AO1 | Record | 12 |
| AO2 | Explore | 12 |
| AO3 | Develop | 10 |
| AO4 | Present | 11 |
| Total (max mark 100) | | 45 |



PREP 1



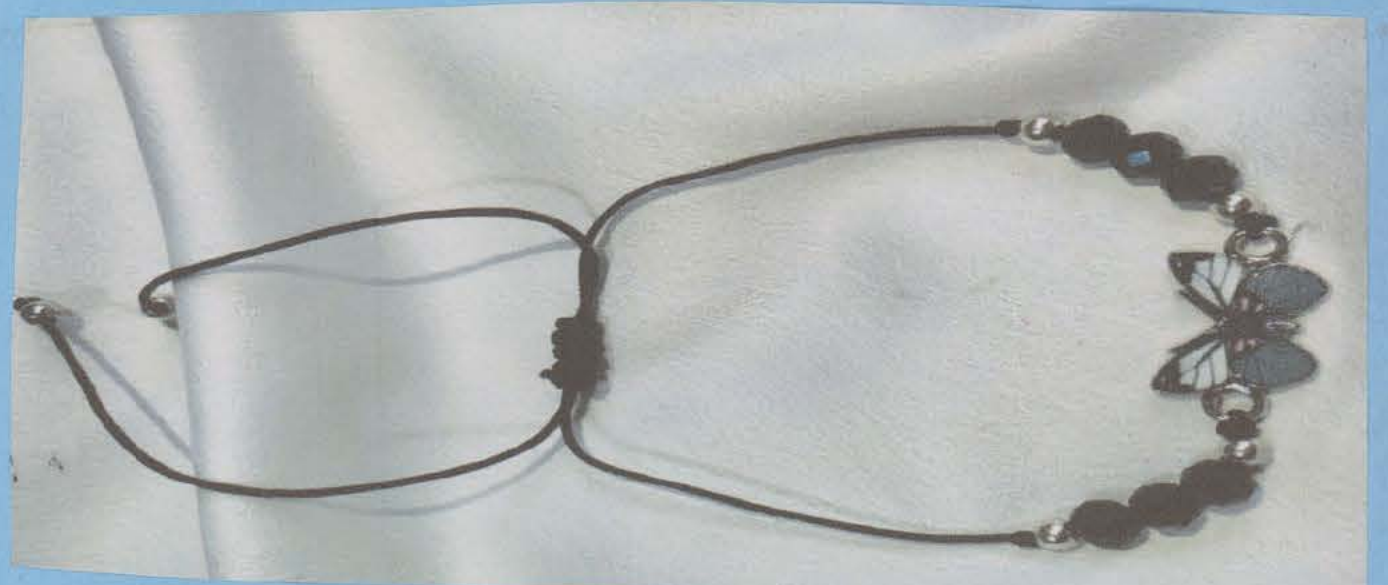
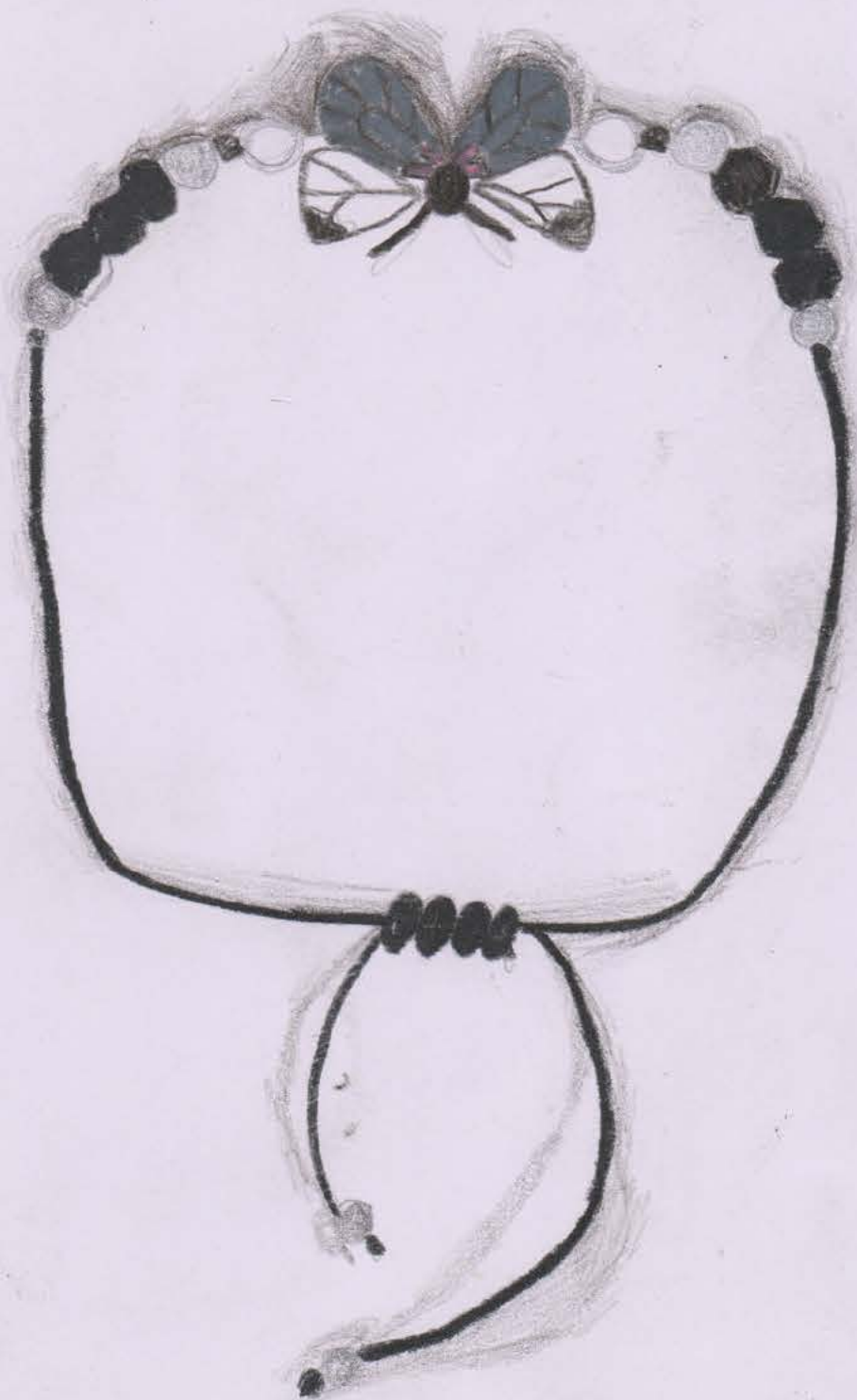
This is a Gambian traditional bangle that is made from a shell. It has a unique colour on it, which are red, yellow and green to show the beauty of Africa. In this drawing, I used the colour brown and a bit of black to shade the surrounding area, to show that it is on the ground and I used the colour black to colour the inside of the shell, to show its whiteness of the shell and to show that it is connected with the thick black thread and this shading is used to show the shape of the bangle.



I used
"PRIMACOLOR
PREMIER"



Here the only colour I used was black, like the drawing (picture) and I used the black colour to shade its surrounding to show that it's on the ground.





used red thread to
sow it, giving an idea
of sowing button, and I
use a brown paper to make
the work more tight rather
than too simple.

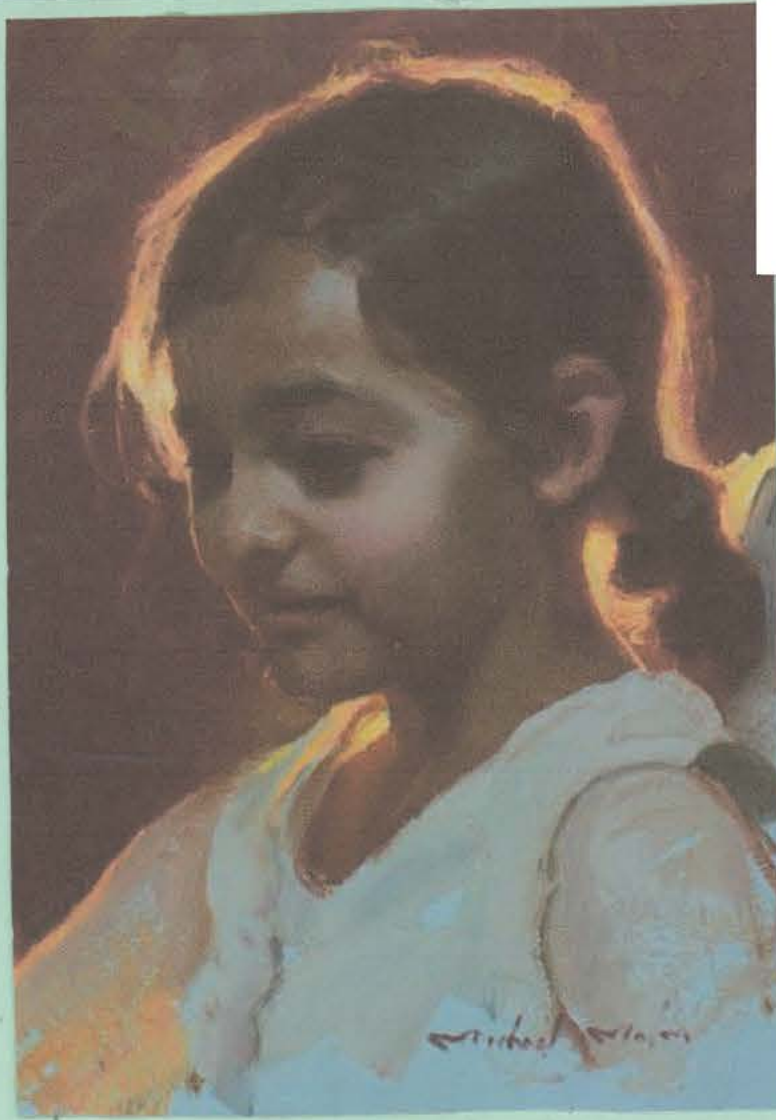
Final composition Study

I used Micheal Malm's idea of highlighting the
surrounding area and I used acrylic paint to
paint the surrounding and "PRISMALDR PREMIERE"
for the inside drawing (like the bangles and buttons).

PREP 2: ARTIST STUDY

Michael Malm

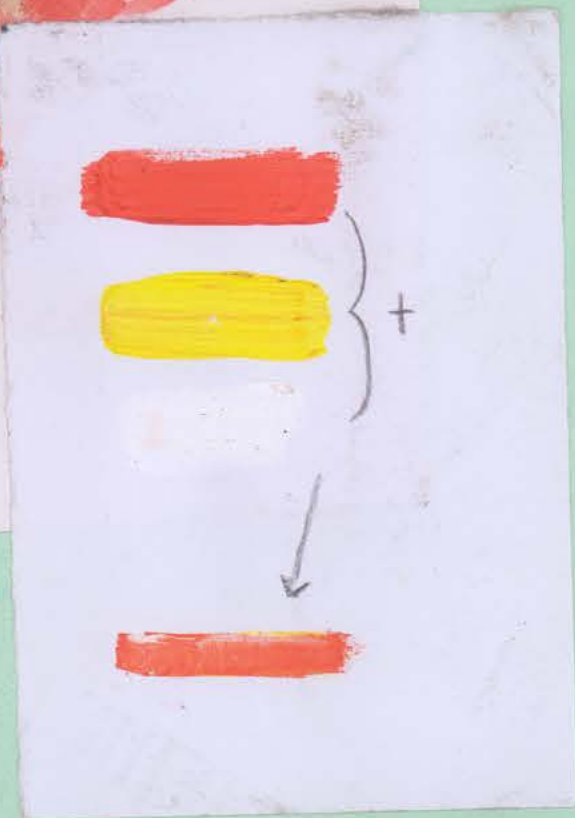
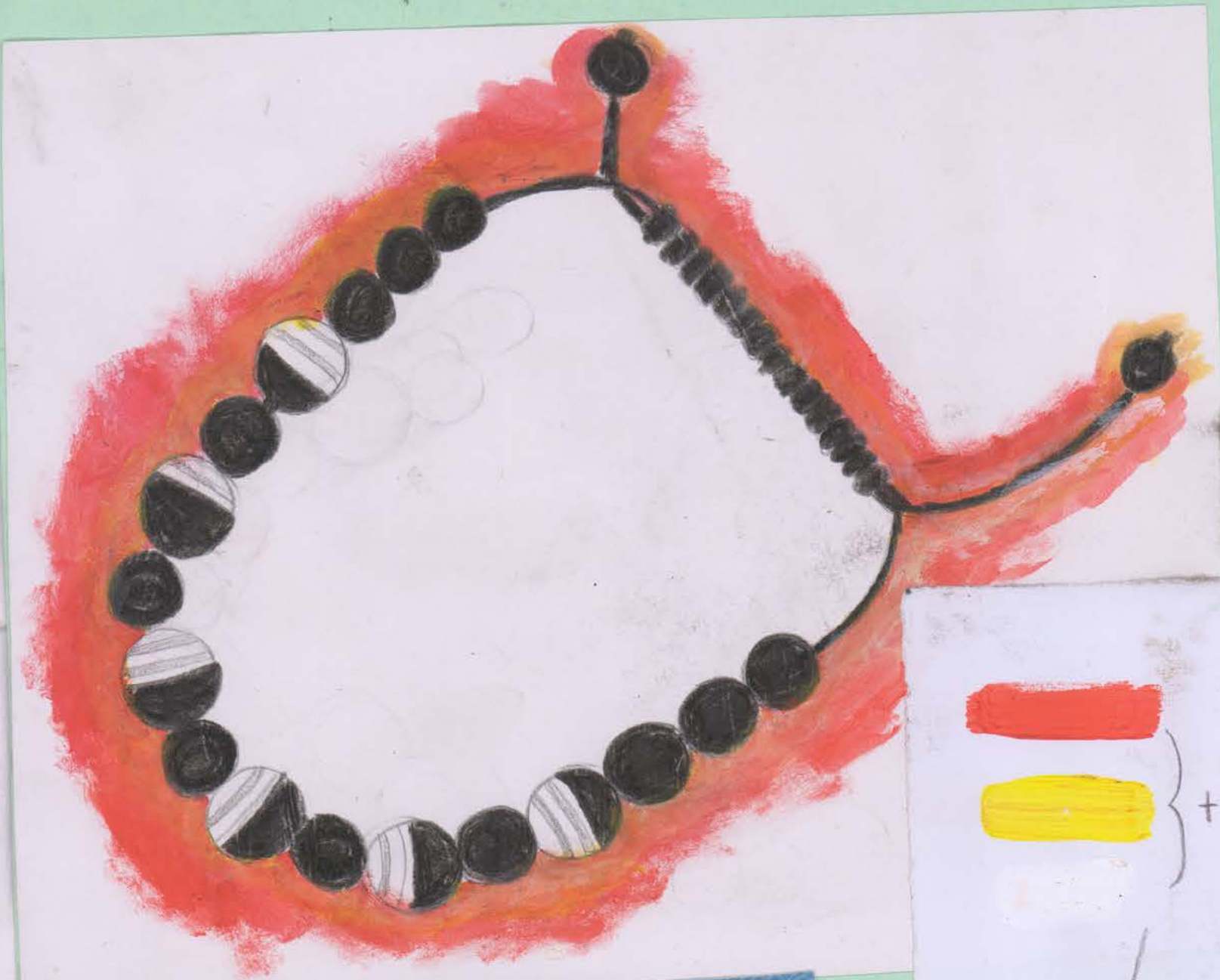
I used Michael Malm's drawing as my study. In Michael's drawing the surrounding of an object is highlighted and in bright colour, like there's a light behind the drawing of a person.



Michael Malm's drawing

reference (my drawing)

- I'll use Michael's idea of brightening the surrounding with my bangles and buttons, using different colours to highlight the surrounding.



Study colour

These are the colours I used to highlight the surrounding as if there is light behind it. I used white to brighten it more.



I tried using the color black since the pearl bangle is a bit of cream and white to show the whiteness of the bangle.



3
It has 3 colours, different from the previous ones, and I wanted to make it different.



← I used Acrylic paint to paint this drawing.
I used different colours to show the colour of the button in the picture and also combination of paint.



← Also used acrylic paint to paint this drawing.

