

Marking standards for

**Cambridge IGCSE™ / IGCSE (9–1) / O Level Art & Design
0400 / 0989 / 6090**

Component 2

Example 7

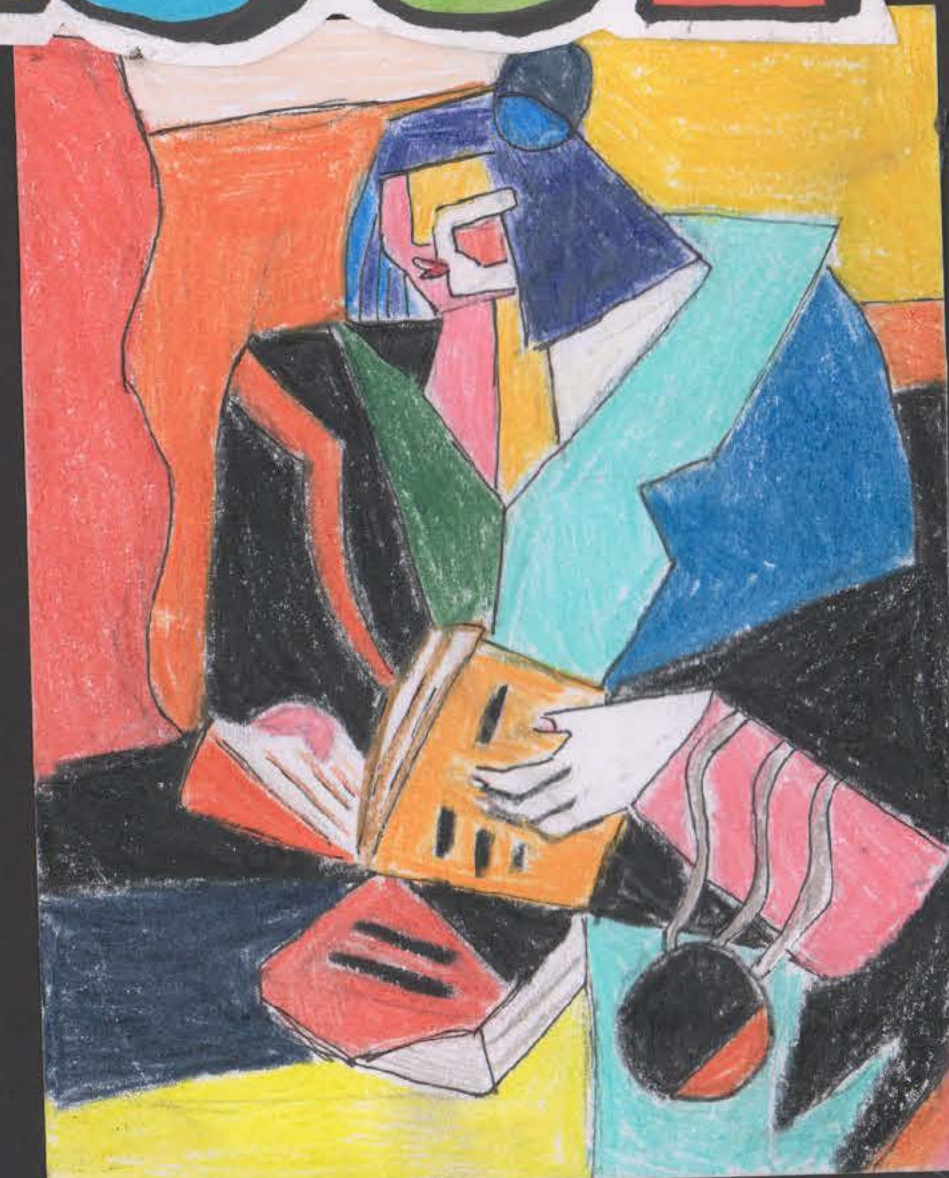
		Mark
AO1	Record	11
AO2	Explore	12
AO3	Develop	14
AO4	Present	13
Total (max mark 100)		50



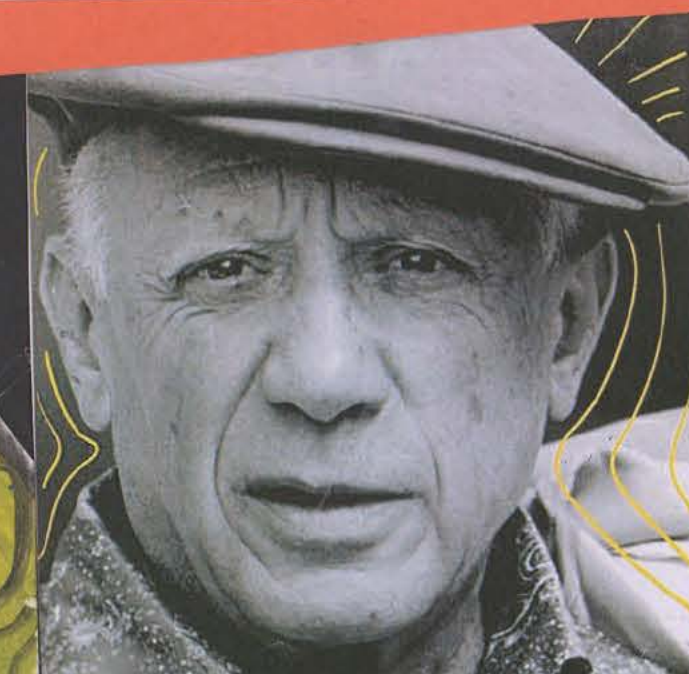
The VISION of the LOST



My Concept.



For this artwork, I decided to make Picasso my topic for this piece. As well, as using the synthetic cubism style that earned him great fame. However, to show the clear differentiation between the 2 genres that I have picked, Cubism and Realism. I decided to go for a brighter palette leaning on the contrast wheel. As for the focus on the eye, I recreated it with a charcoal pencil that gave it a monochrome outcome which was aimed at a more realistic look. In that way, there was a distinction between cubism and realism, where cubism portrayed the warped viewpoint in the eyes of a "lost" person and whereas the revealed eye, reflects the real world.



Claire Prouvost is a French illustrator inspired by the cubist art movement, her illustrations pushed me forward to continue the cubism genre. Her particular art piece has deeply reminded me of my school librarian. Therefore I ended up putting a picture of the illustration and the librarian aside as my inspiration to recreate the artwork.

INK..

Although I was positive about using aquarelle for this exact genre, I was initially planning on exploring different media and materials that might have been worth adding to my art pieces.

At first, I was really curious about trying the ink pen. I wanted to see what would come out as a result of the ink pen mixed with different

techniques, such as: stippling and hatching that I combined. Although it was really fun, it didn't meet my expectations.

Exploring MEDIA

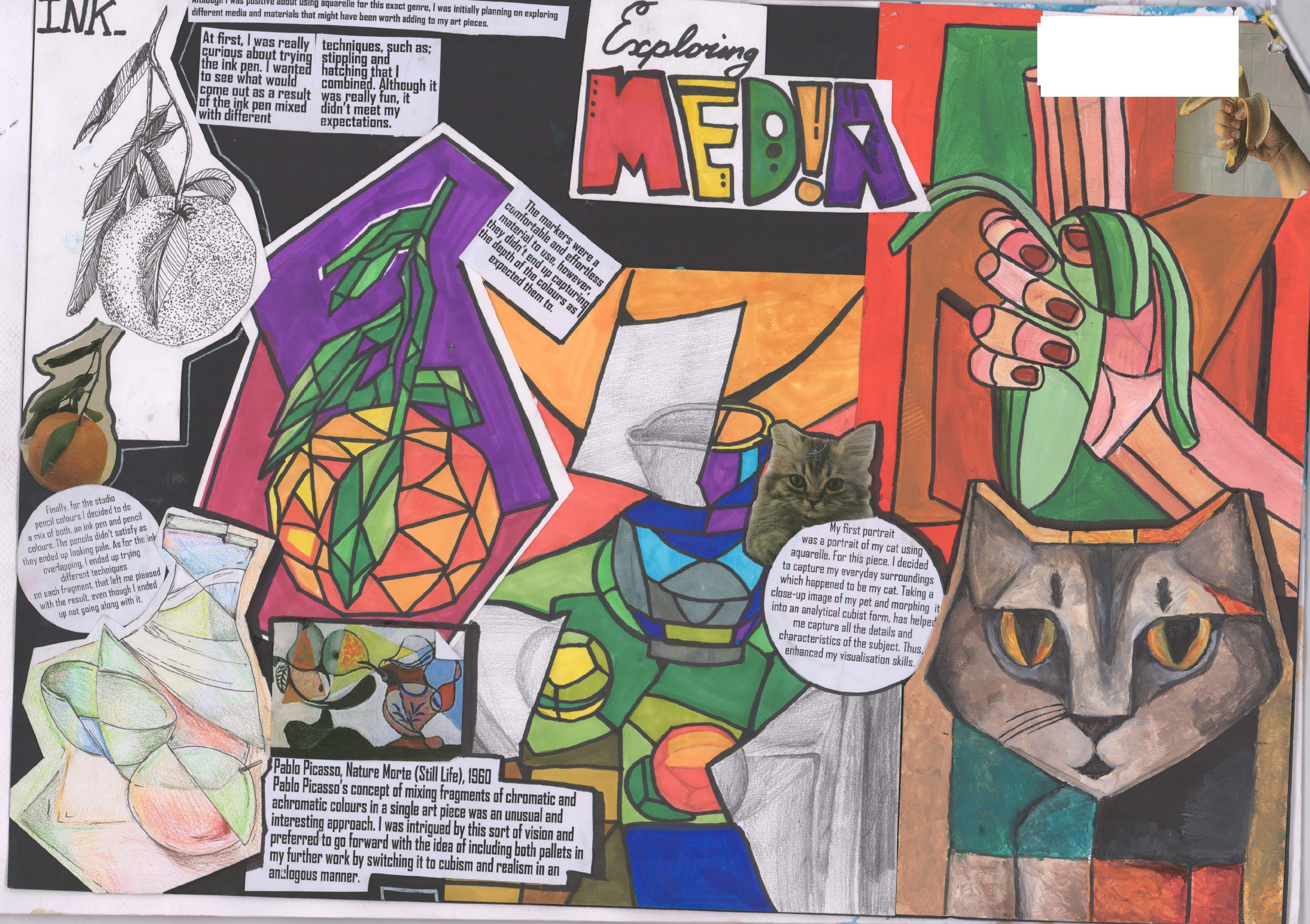
The markers were a comfortable and effortless material to use, however, they didn't end up capturing the depth of the colours as expected them to.

Finally, for the studio pencil colours I decided to do a mix of both, an ink pen and pencil colours. The pencils didn't satisfy as they ended up looking pale. As for the ink, I ended up trying overlapping. I ended up trying different techniques on each fragment, that left me pleased with the result, even though I ended up not going along with it.

My first portrait was a portrait of my cat using aquarelle. For this piece, I decided to capture my everyday surroundings which happened to be my cat. Taking a close-up image of my pet and morphing it into an analytical cubist form, has helped me capture all the details and characteristics of the subject. Thus, enhanced my visualisation skills.

Pablo Picasso, Nature Morte (Still Life), 1960

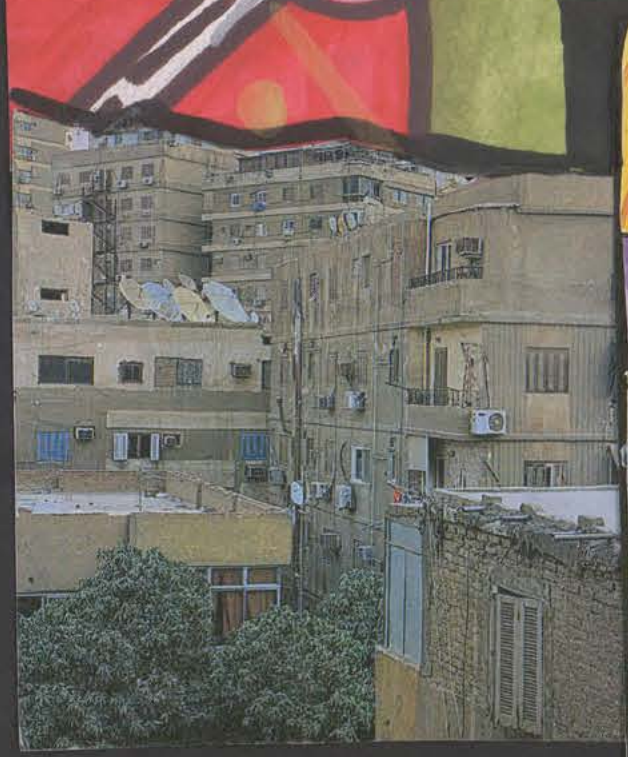
Pablo Picasso's concept of mixing fragments of chromatic and achromatic colours in a single art piece was an unusual and interesting approach. I was intrigued by this sort of vision and preferred to go forward with the idea of including both palettes in my further work by switching it to cubism and realism in an analogous manner.



Day-to-Day

Lost in the

I settled on continuing the cubism-realism interpretation. Therefore, I decided to show the surroundings from the viewpoint of a child. The bubbles, as it's a reflective source it was supposed reflect the reality that the child doesn't notice when lost beyond his imagination. Whilst, the rest of the scene is a part of the imagination.



The Ladies



For the final artwork, I decided to dedicate it to the lady that has been guarding my building for more than I have known. Her simple way of life has always fascinated me. In Particular, it was the interior that caught my eye. The precise elements and details have depicted the cubism well and the luminous, bright colours were a great addition to the visual. It seemed so simple yet held a big cultural significance. The clarity of the culture, resembled to cubism closely, from the bright pigments to the remarkable and memorable attributes. Representing a culture that was present for many centuries and is here now was important. People live and carry the cultural heritage till the everything they see and absorb day-to-day is linked back to it.