

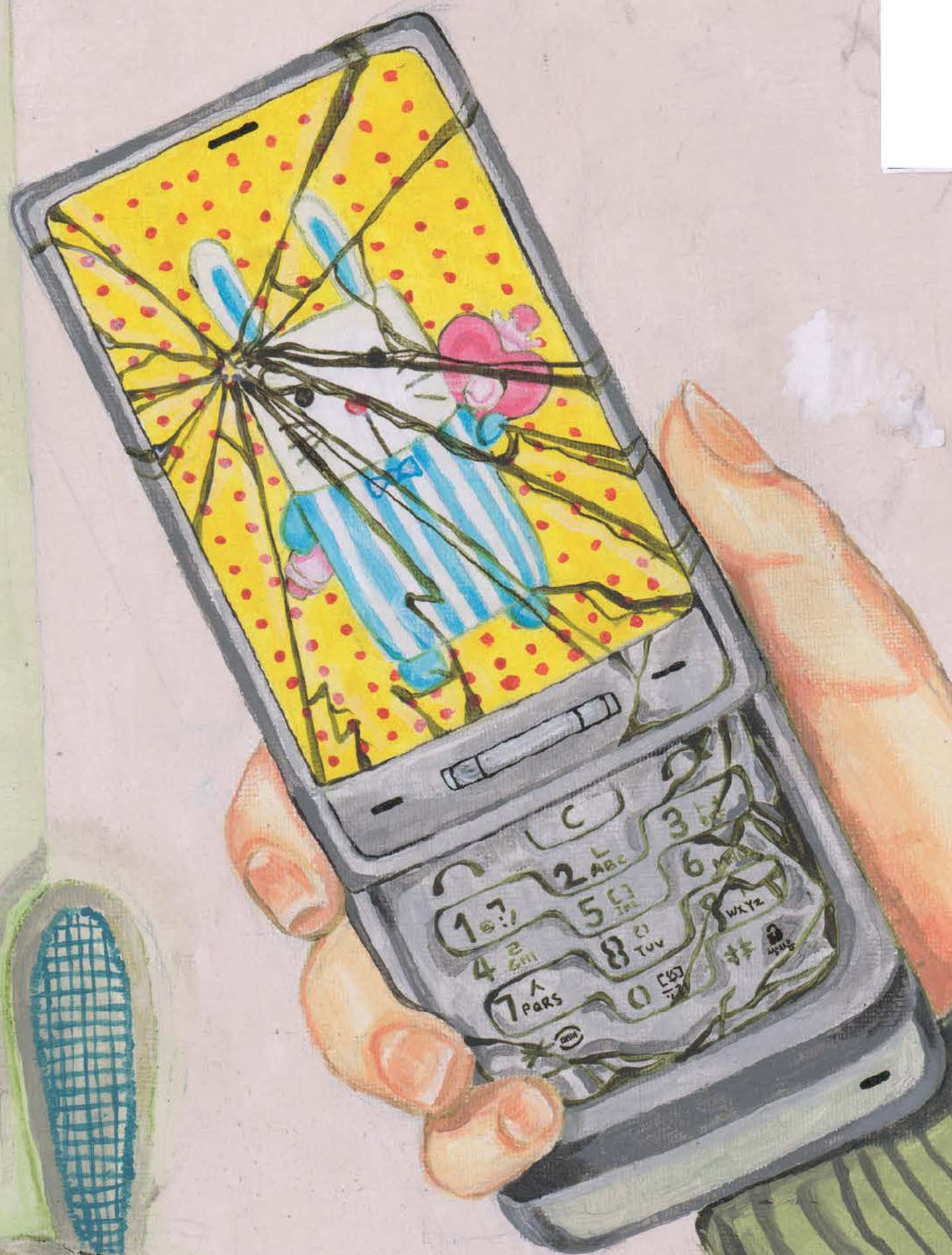
Marking standards for

**Cambridge IGCSE™ / IGCSE (9–1) / O Level Art & Design
0400 / 0989 / 6090**

Component 2

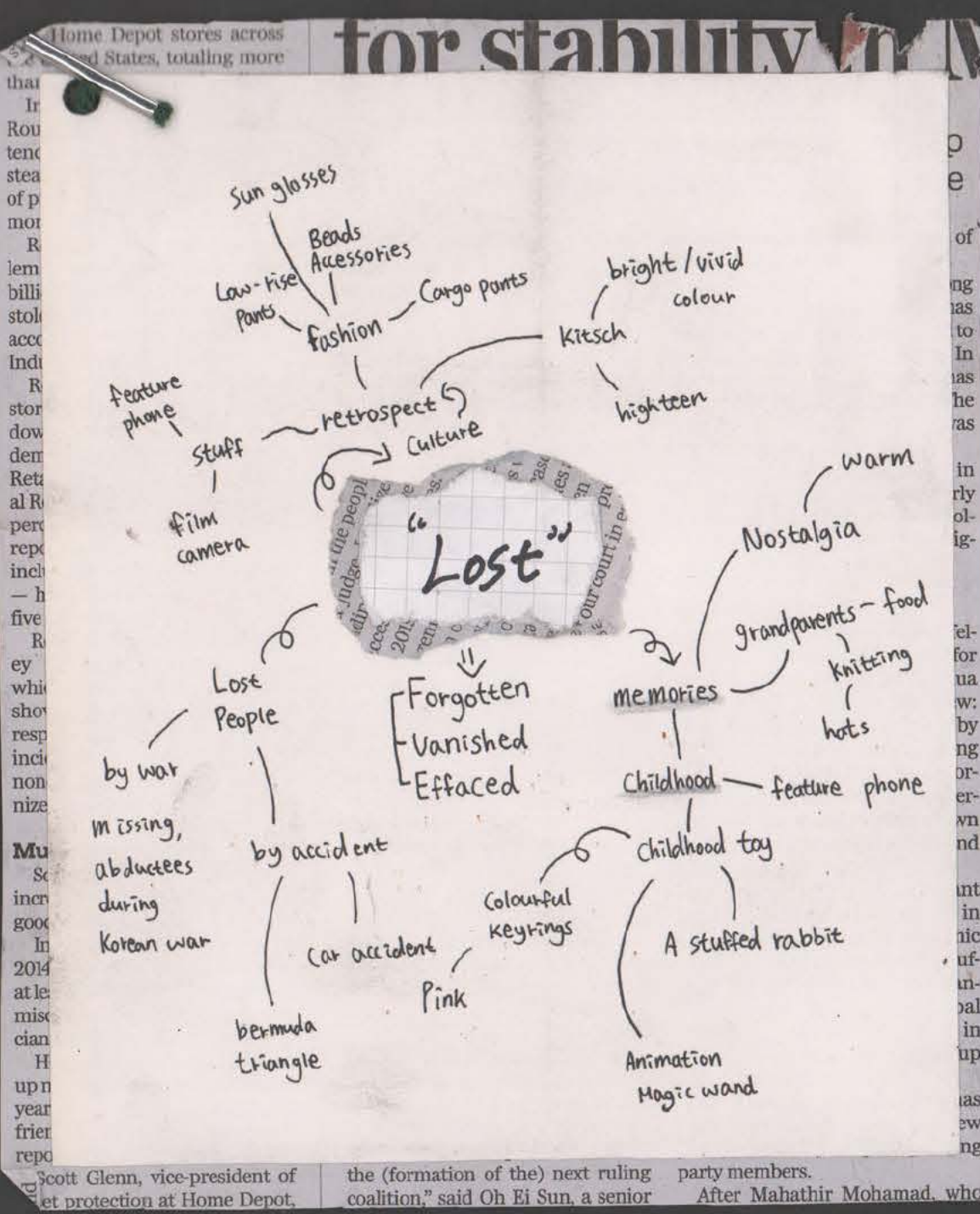
Example 5

		Mark
AO1	Record	17
AO2	Explore	16
AO3	Develop	16
AO4	Present	16
Total (max mark 100)		65



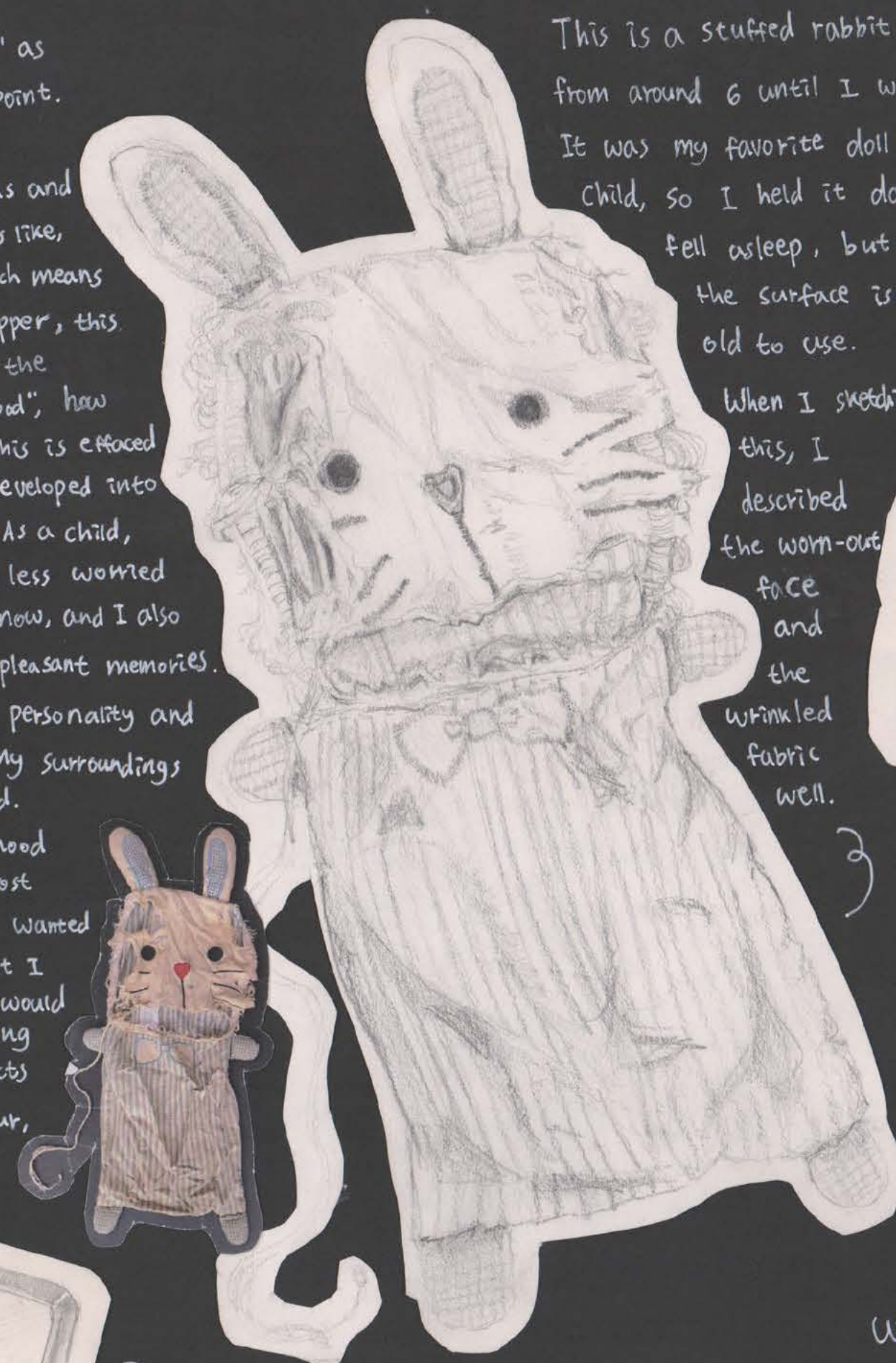
my childhood home.

for stability in

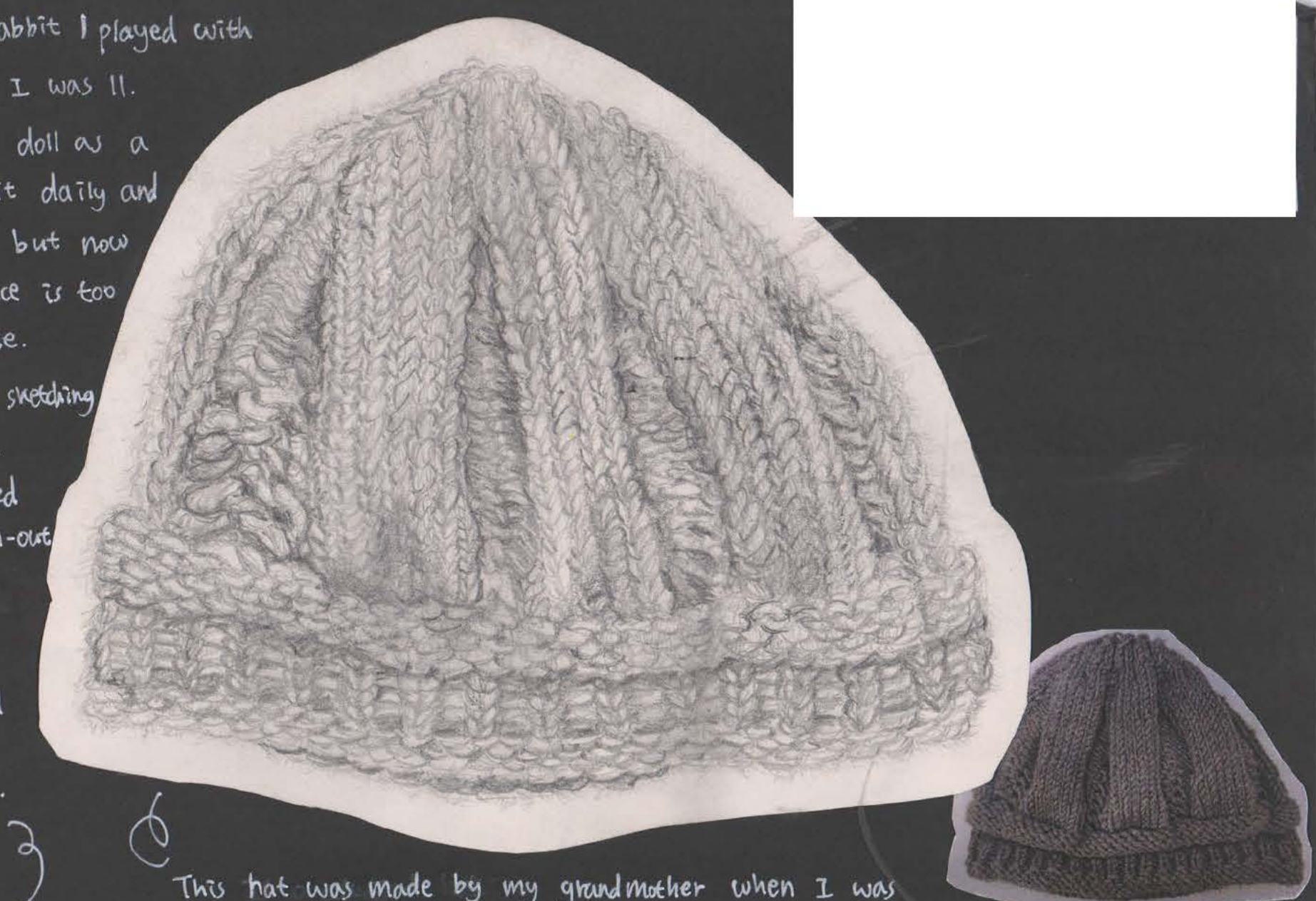


I chose "lost" as my starting point. I considered different ideas and explored words like, effaced, which means to make disappear, this developed into the "lost childhood", how over time, this is effaced as I have developed into a teenager. As a child, I was much less worried than I am now, and I also have many pleasant memories. However, my personality and state and my surroundings have changed. So my childhood became a lost time that I wanted to return but I couldn't. It would be interesting

This is a stuffed rabbit I played with from around 6 until I was 11. It was my favorite doll as a child, so I held it daily and fell asleep, but now the surface is too old to use.



When I sketching this, I described the worn-out face and the wrinkled fabric well.



This hat was made by my grandmother when I was young. I can't see my grandmother often because I live in another country, but I lived with her when I was young. This hat is a reminder of the time when I can't go back anymore. In sketching this hat, I detailed the repeated weaving of the knit and wool of the old hat.

This magic wand appeared in an animation I liked to watch when I was young.



When I was young, I wanted pink very much, unlike now. So this was an excellent item to show my now-changed taste and lost innocence



This key ring is filled with liquid, glitter, and petite figure inside, and I focused on expressing it.

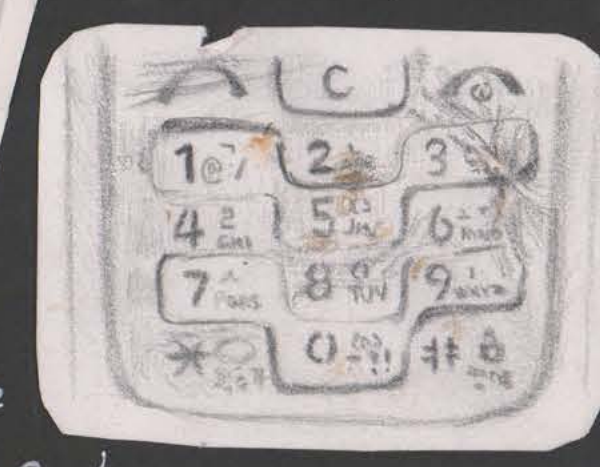
These are keyrings that I used as a child. It is also colourful to my childhood taste.



To express this lost childhood through the objects of childhood. Childhood objects are usually sweet and colourful. Some of them, however, wear out, change colour, and become much older over time and over time. Even if it's not, there are many items that I don't use because my taste has changed. The image of objects that lost their original clean condition could represent the lost childhood.



This is the first cell phone I used. Unlike the smartphone I use now, I used feature phones when I was young. This cell phone is also ancient, so the keyboard part needs to be fixed and rusty. When drawing this, the metal feeling and the broken feeling of the feature phone were described intensively.

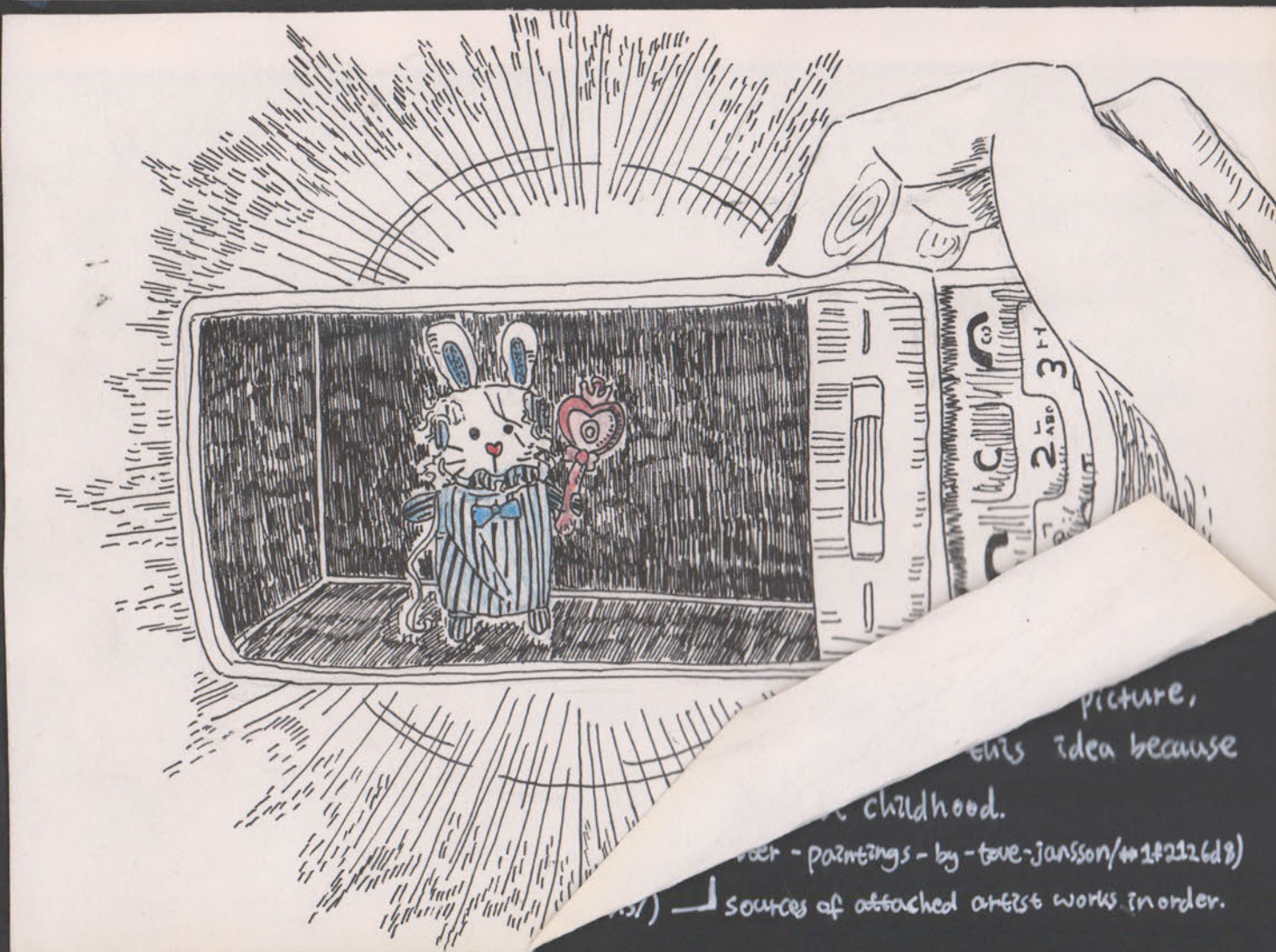


I sketched the keyboard part of the feature phone with more details.

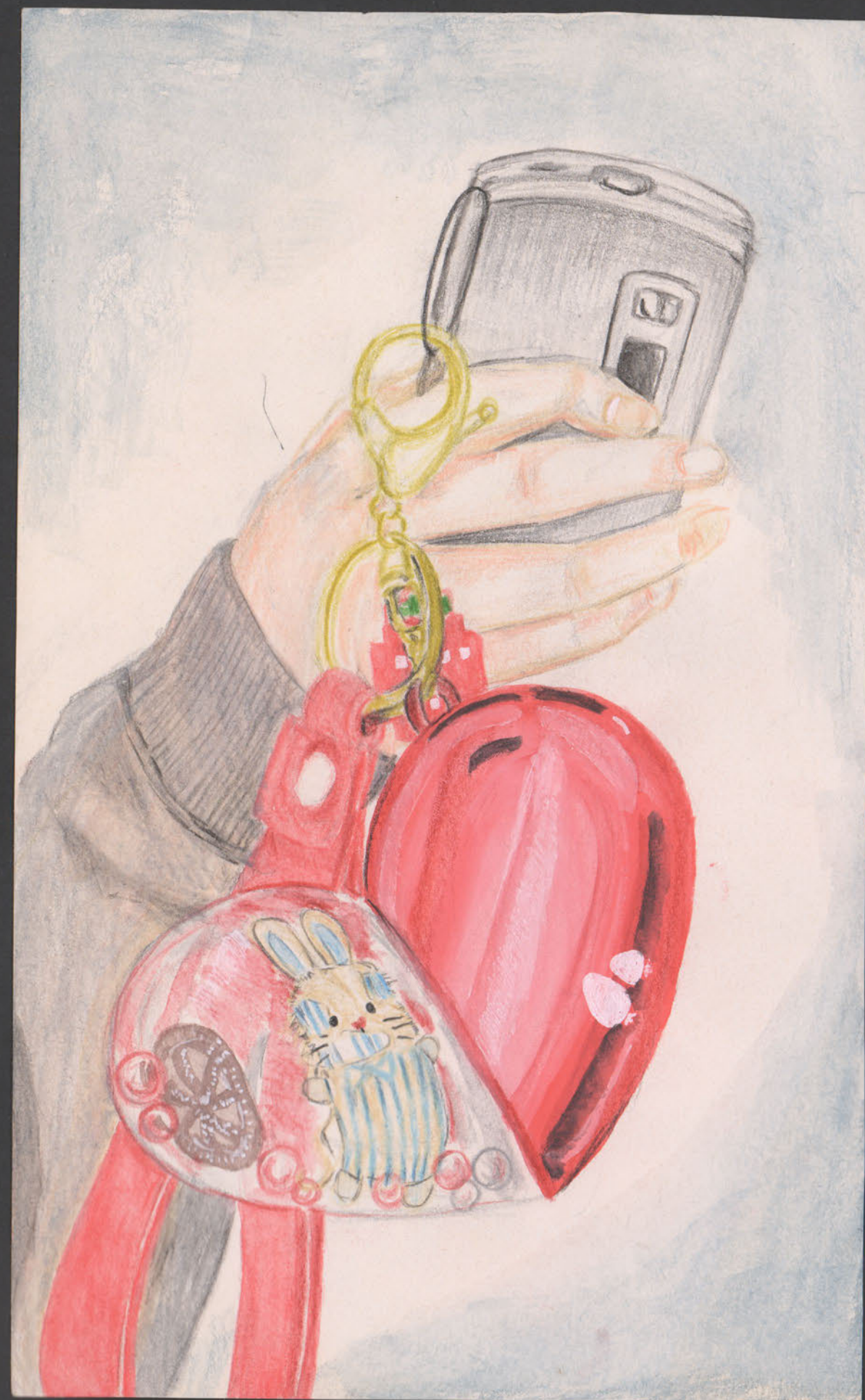
The rabbit on the feature phone screen is described as a clean new one. The background of the painting was painted dark monochrome with grey, like Nishitani's work.



Tove Jansson



I made a magic wand out of air-dry clay. To make this, I had to observe the appearance of the magic wand from various angles, so it helped me to improve my understanding of the magic wand, the object I wanted to draw.



Chinese, German leaders hail 50 years of relat

By ZHANG YUNBI

Leaders of China and Germany have expressed their shared commitment to advancing bilateral relations and pragmatic cooperation as the two countries celebrated the 50th anniversary of the establishment of diplomatic ties in 1972.

A spirit of teamwork and resisting calls for "decoupling" between them are key to helping the two major countries jointly introduce more benefits for both nations and beyond, observers said.

President Xi Jinping exchanged congratulatory messages on Tuesday with German President Frank-Walter Steinmeier on the anniversary.

Xi said the ever-growing mutual respect and mutual benefit between the two countries have made a significant contribution to the development of the world.

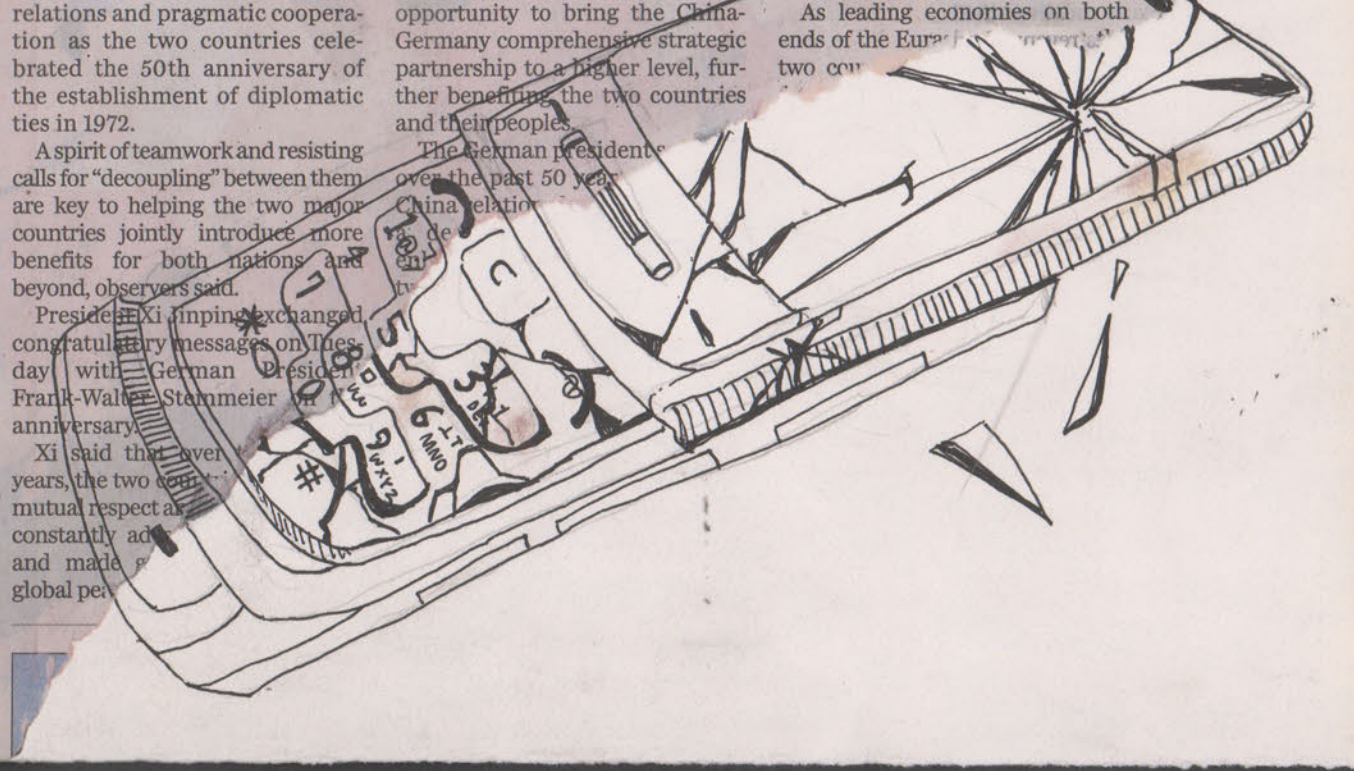
Xi said he attaches great importance to the development of China-Germany ties, and he is willing to work with the German president to take the 50th anniversary as an opportunity to bring the China-Germany comprehensive strategic partnership to a higher level, further benefiting the two countries and their peoples.

The German president said that over the past 50 years, China's reform and opening up have brought about profound changes to the world.

As leading economies on both ends of the Eurasian landmass, the two countries have a long history of cooperation and friendship.

annual bilateral trade has increased from less than \$300 million in 1972 to \$235.1 billion last year, according to Chinese ambassador to Germany Wu Ken.

Institute of R and Central "China" reform



Jeff Koons



I drew a key ring, replacing a small figure initially in it with a stuffed doll and a hat, which are related to my childhood memories.

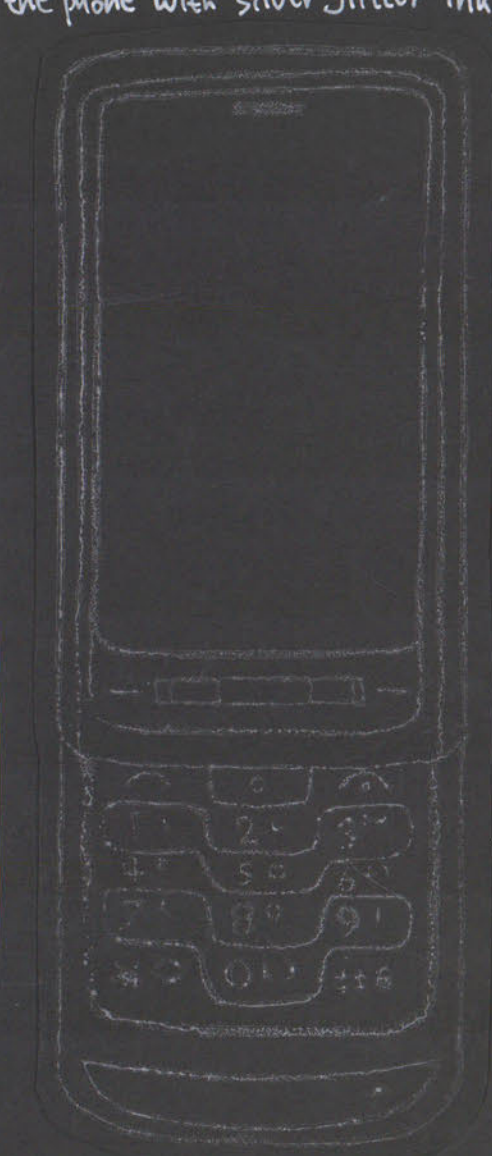
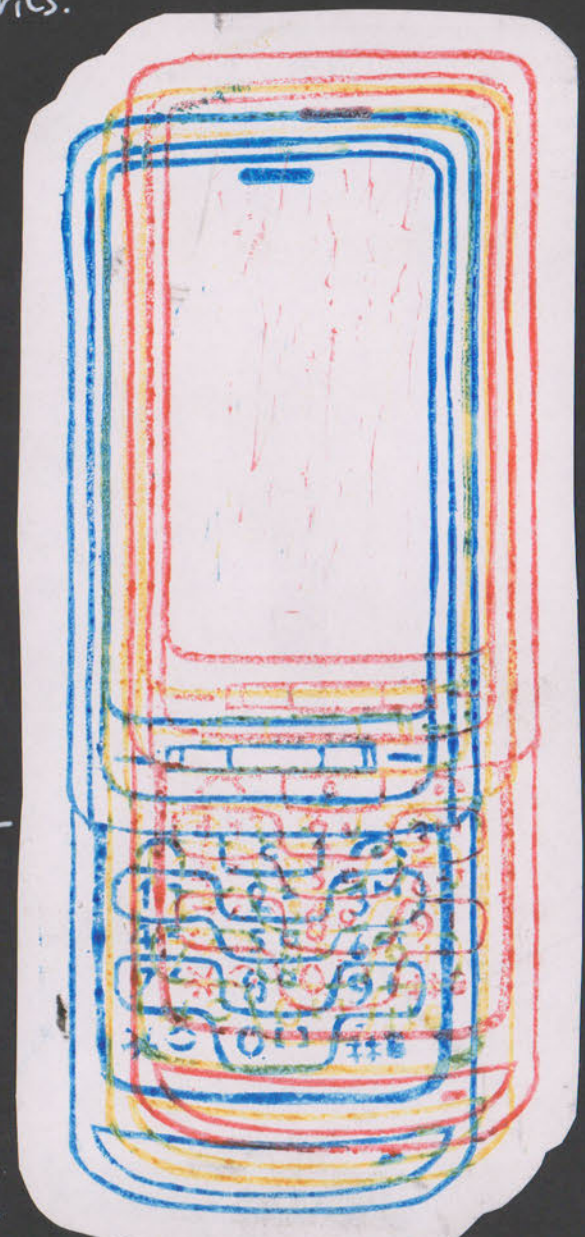
In this painting, the size of the keyring is larger than the original one to emphasise the inside.

Give a metallic feel on the phone with silver glitter ink.

To express the contrast between the previously intact phone and the present broken phone, half broken and half rusty. The newspaper is the background of the regular part because newspapers contain past events.

I experimented with making feature phones into prints.

Give a retro feel using primary colours, as used in Jeff Koons work.





(<https://www.wow.com/artist-profile/nicoletta-ceccoli-op>)
 - Source of these artist works



Nicoletta Ceccoli - She drew many toys children can usually play with, such as stuffed dolls and children's blocks. However, she gave the painting a lonely and dark atmosphere by lowering the brightness and saturation of the painting and painting background mainly in dark monochrome. She says she tried to express the innocence of her lost childhood through this. I copied one of her work with something similar to the stuffed rabbit doll I wanted to paint. As I drew this picture, I realised that to produce a colour similar to hers, I had to mix a lot of grey when painting.

I drew a magic wand and a stuffed rabbit using her technique. As in her painting, I painted the background black and expressed the doll as if it were alive. Also, I expressed the stuffed rabbit by mixing grey.



I painted a part of the stuffed rabbit with acrylic paint. The background was painted black throughout the painting, and the colour of the Mute tone was used by applying the style of Nicoletta Ceccoli. However, the rabbit's nose, the most coloured part of the painting, is painted in solid red, as in Tove Jansson's work. And inspired by Jeff Koons' halftone use, the rabbit's stripes are expressed in a halftone pattern, adding a retro feeling.

I drew a feature phone with a coloured pencil, a black pen, and drew the screen with acrylic paint. As in Jeff Koons' work, the background is expressed in halftones, and as part of a way to give a retro feeling, the magic wand is coloured without expression of light and shade.



I used a black pen to express the broken parts clearly and to make the painting look cleaner.



I drew inside of the keyring in detail using acrylic paint. I've been drawing this because I find the unique shape of this keyring very interesting, but its colour is too intense for the feature phone and the stuffed rabbit, the object I'm trying to use as the main. Also, I won't use this eventually because I've determined that the liquid in the keyring is very difficult and time-consuming task to express in acrylic paint.



I drew a broken feature phone and a stuffed rabbit using acrylic paint and a black pen. I maximised the broken part of the feature phone compared to its original image to emphasise that it's old. In addition, the picture taken through the feature phone is a past image, so the rabbit on the feature phone screen is described as a clean new one. The background of the painting was painted dark monochrome mixed with grey, like Nicoletta's work.



(<http://www.wow.com>)
/artist-profile/
nicole-cccoli-
-ap)
-Source of these
artist works

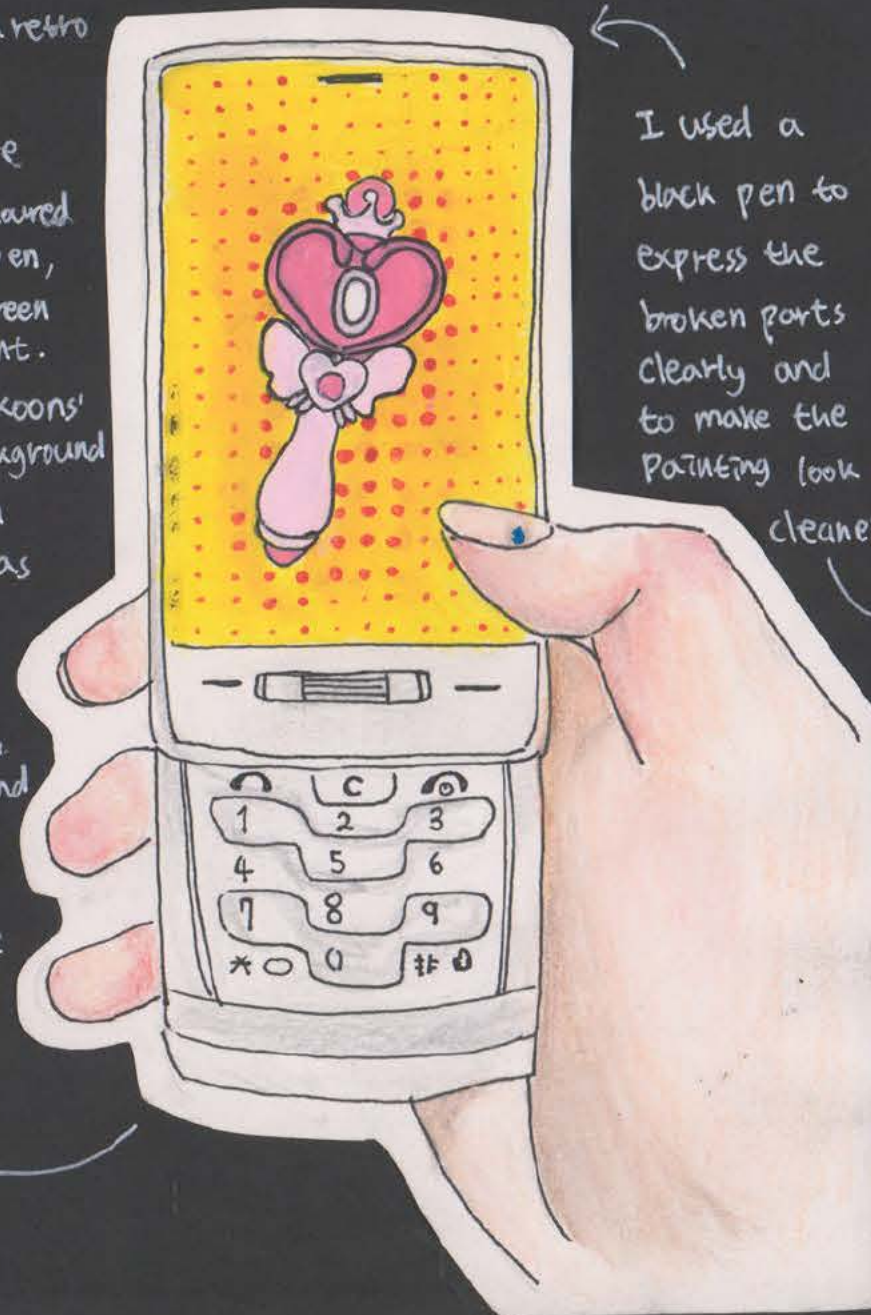


Nicoletta Ceccoli - She drew many toys children can usually play with, such as stuffed dolls and children's blocks. However, she gave the painting a lonely and dark atmosphere by lowering the brightness and saturation of the painting and painting background mainly in dark monochrome. She says she tried to express the innocence of her lost childhood through this. I copied one of her work with something similar to the stuffed rabbit doll I wanted to paint. As I drew this picture, I realised that to produce a colour similar to hers, I had to mix a lot of grey when painting. I drew a magic wand and a stuffed rabbit using her technique. As in her painting, I painted the background black and expressed the doll as if it were alive. Also, I expressed the stuffed rabbit by mixing grey.



I painted a part of the stuffed rabbit with acrylic paint. The background was painted black throughout the painting, and the colour of the Mute tone was used by applying the style of Nicoletta Ceccoli. However, the rabbit's nose, the most coloured part of the painting, is painted in solid red, as in Tove Jansson's work. And inspired by Jeff Koons' halftone use, the rabbit's stripes are expressed in a halftone pattern, adding a retro feeling.

I drew a feature phone with a coloured pencil, a black pen, and drew the screen with acrylic paint. As in Jeff Koons' work, the background is expressed in halftones, and as part of a way to give a retro feeling, the magic wand is coloured without expression of light and shade.



I used a black pen to express the broken parts clearly and to make the painting look cleaner.



I drew inside of the keyring in detail using acrylic paint. I've been drawing this because I find the unique shape of this keyring very interesting, but its colour is too intense for the feature phone and the stuffed rabbit, the object I'm trying to use as the main. Also, I won't use this eventually because I've determined that the liquid in the keyring is very difficult and time-consuming task to express in acrylic paint.



I drew a broken feature phone and a stuffed rabbit using acrylic paint and a black pen. I maximised the broken part of the feature phone compared to its original image to emphasise that it is old. In addition, the picture taken through the feature phone is a past image, so the rabbit on the feature phone screen is described as a clean new one. The background of the painting was painted dark monochrome mixed with grey, like Nicoletta's work.