

## Marking standards for

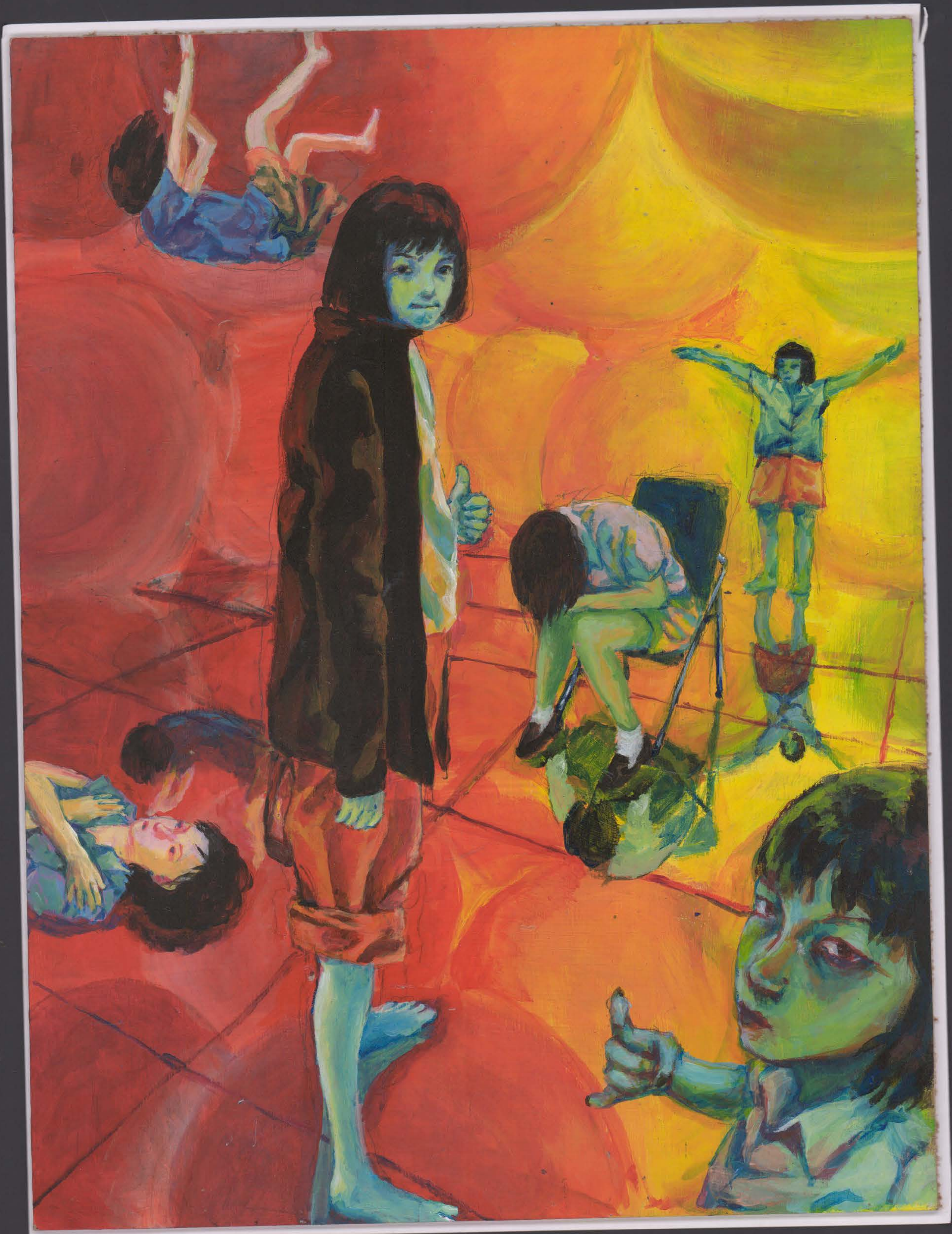
**Cambridge IGCSE™ / IGCSE (9–1) / O Level Art & Design  
0400 / 0989 / 6090**

### Component 2

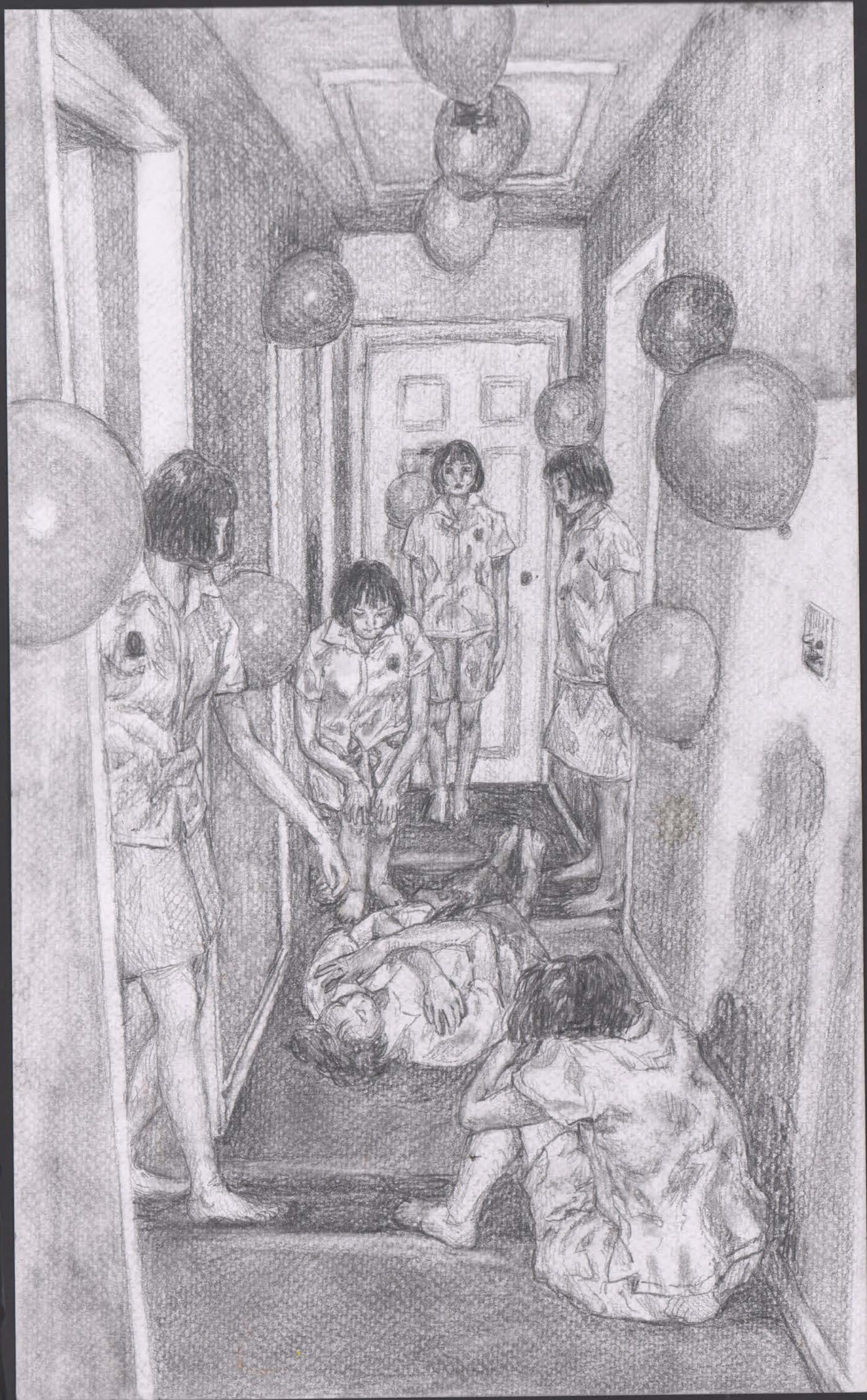
#### Example 1

		Mark
AO1	Record	23
AO2	Explore	23
AO3	Develop	24
AO4	Present	24
Total (max mark 100)		94





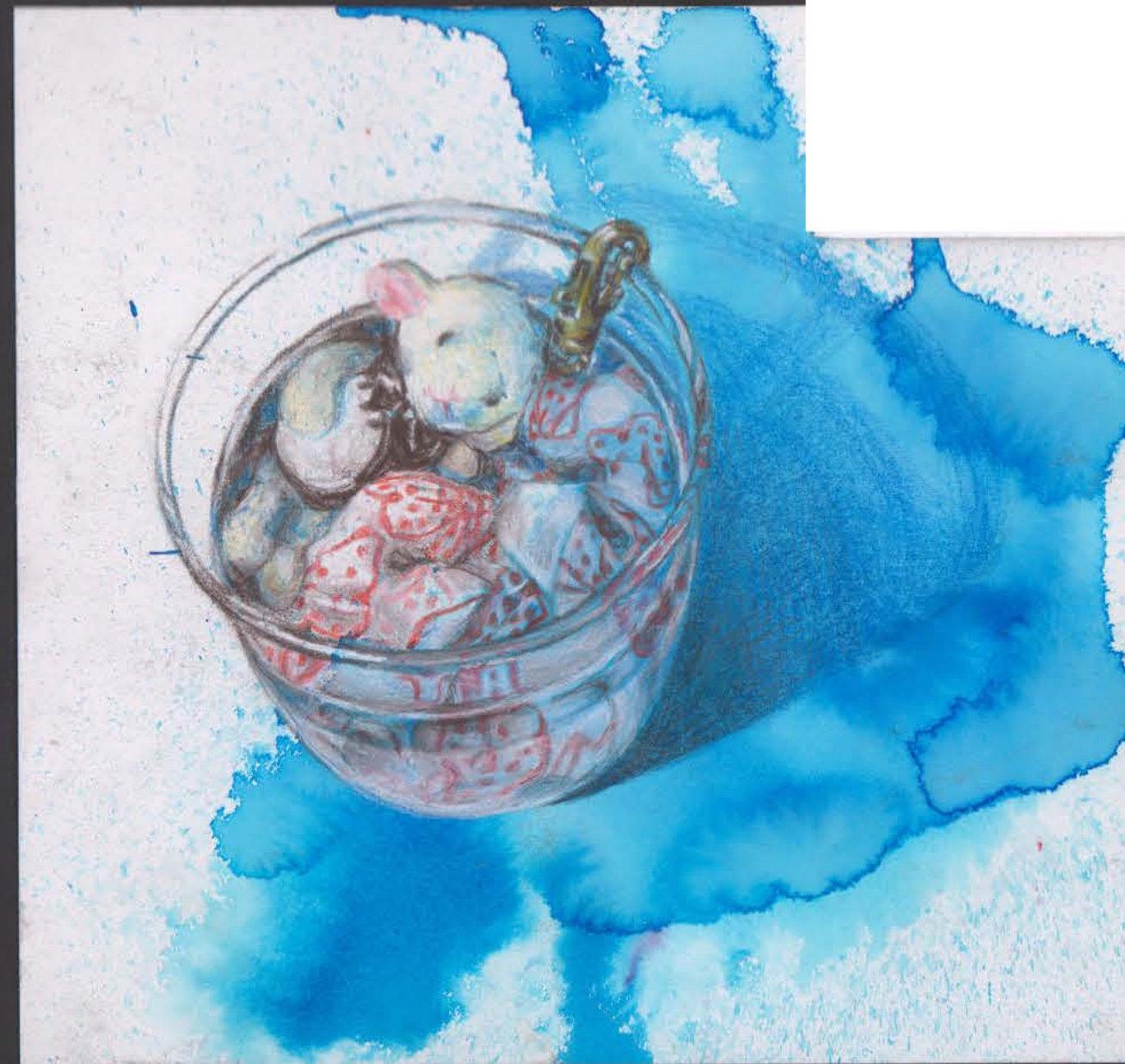
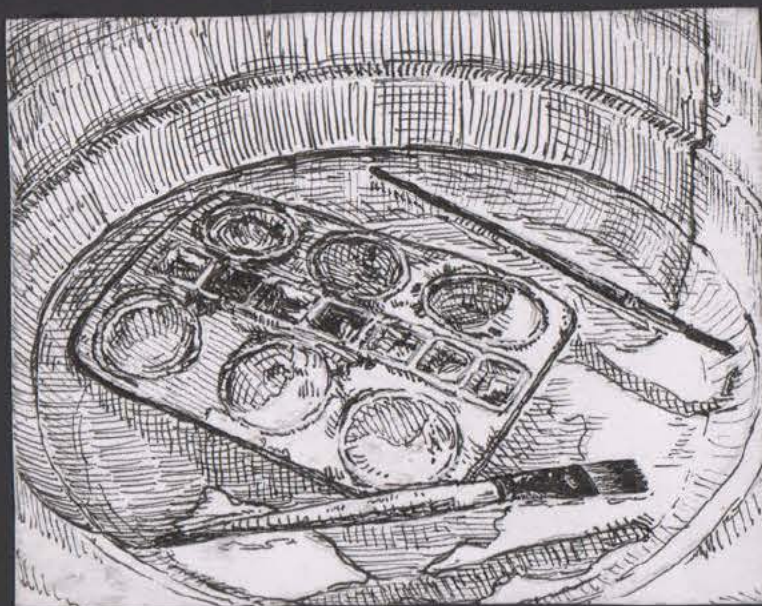




Being lost in a space  
Idea #1



#3



Idea #3 Lost child



# Lost

Exploring theme:  
Since there are  
different forms of lost,  
I have chosen a few  
to find out the one  
that suits me.



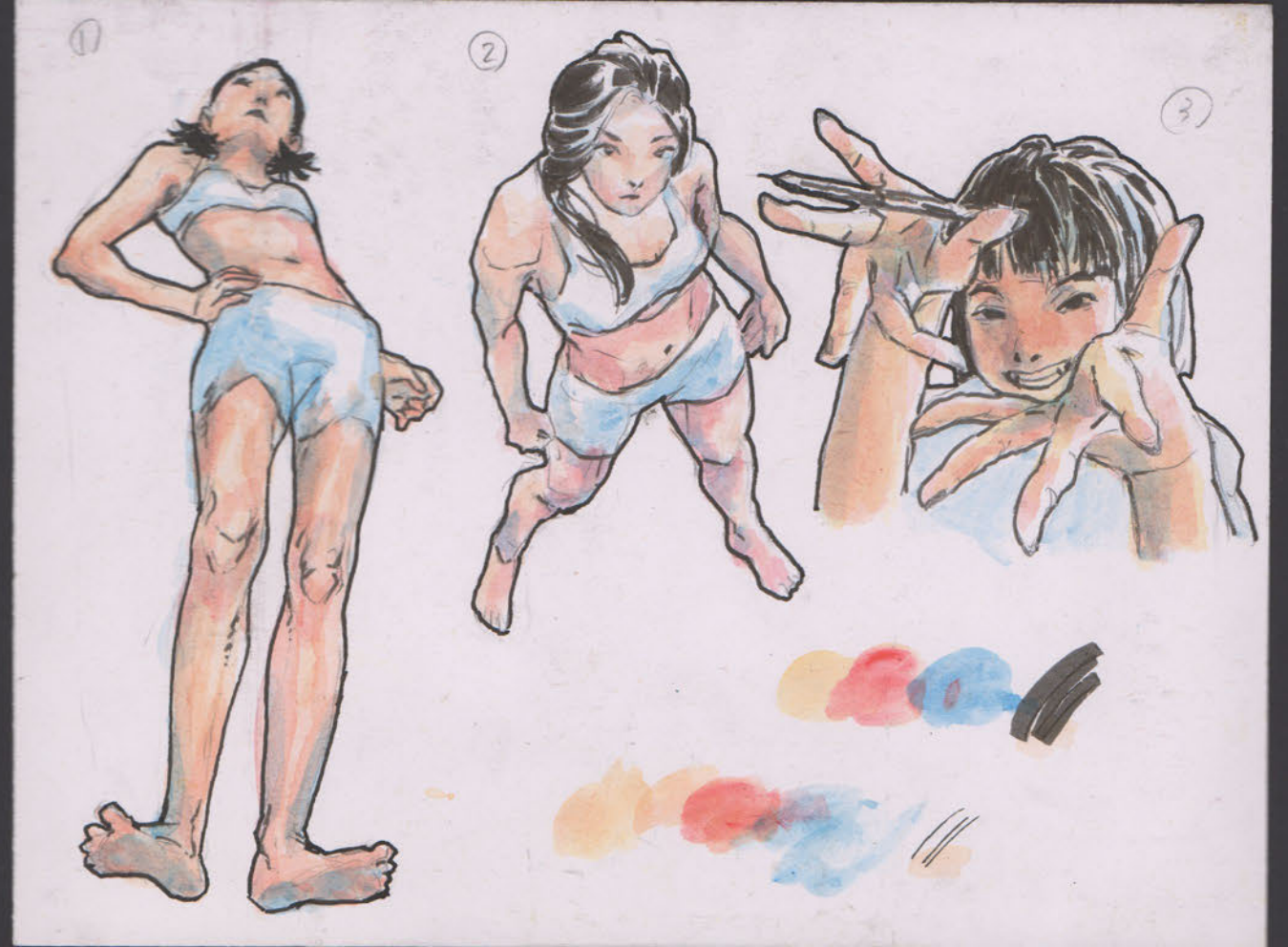
Idea #2 Lost identity and emotions







Secondary source

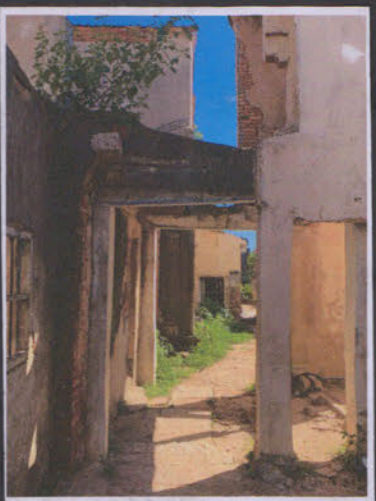


▲ Perspective + Anatomy studies  
① & ② Used secondary sources

▲ Transcription of Andrew Hem's painting from 'Mountain Full'

Background study ▶

This transcription of my own photograph helped me to attempt shading with unusual colours.



# Andrew Hem



▲ Transcription of my own photograph that I've applied surreal colour scheme and elements on the figure.



Andrew Hem's "Typhoon"  
Dimensions: 50x65 cm

Andrew Hem had his first solo exhibition 'Brighter Days' in 2007 and has been working on other exhibitions until now, meaning that his style is closer to modern concept art.

#### ◀ Colour

He uses a bright vivid colour scheme which doesn't quite match up with the real world and contrasts with the fact that everything in the painting is detailed rendered, thus creating a semi-realistic scene in illusionistic set at a remove from reality.

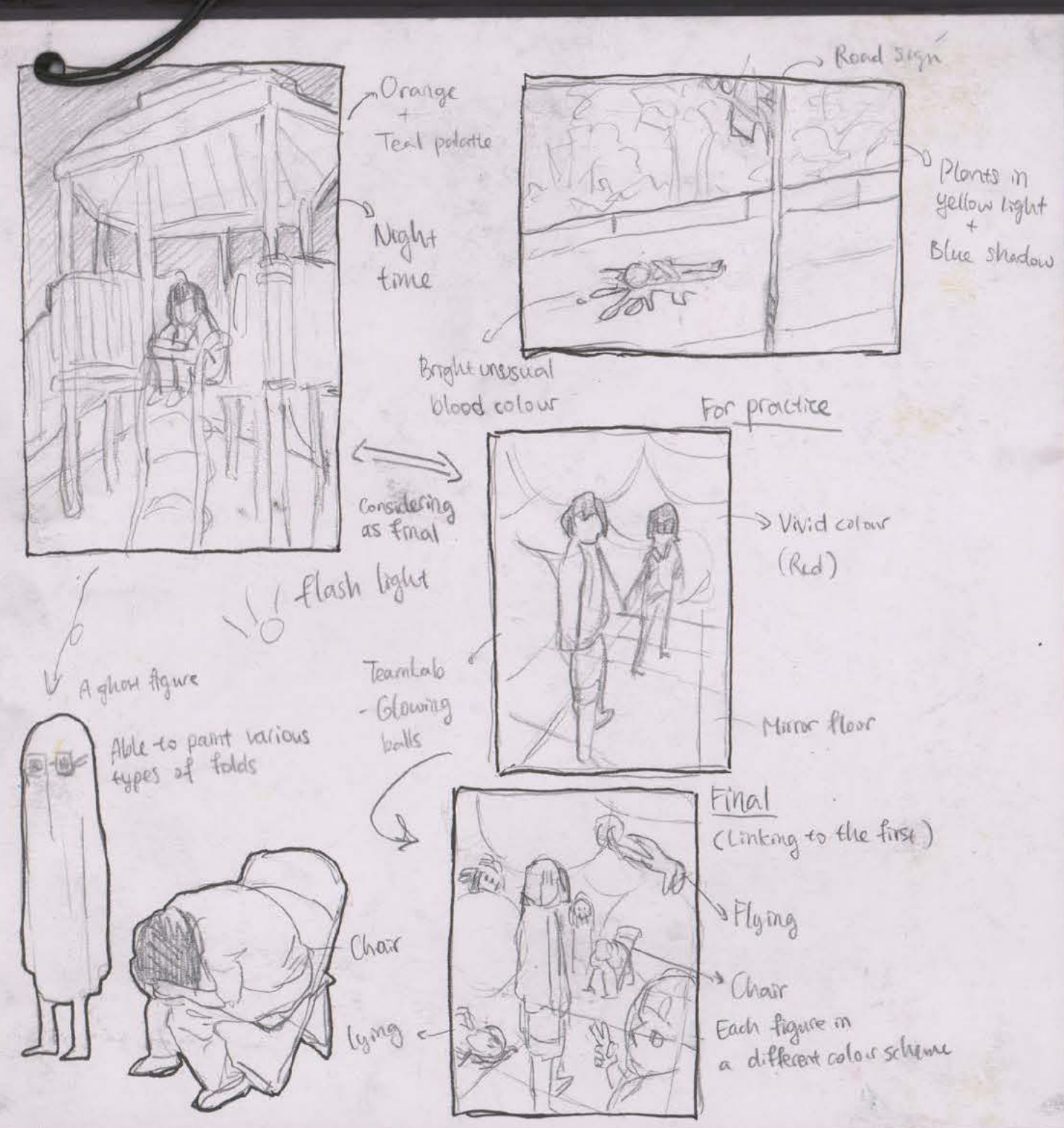
#### ◀ Viewpoint

The paintings often highlight a single person in a group, concentrating on the one who often gazes melancholy from the canvas. This, combined with the fact that the viewer's focal are at eye level of the figure, makes the painting appear to be a momentary view from another figure's perspective.

#### ◀ Tonal equality and Tone

While the overall tone is bright since most colours are saturated, Andrew Hem's clever use of chiaroscuro restores balance and only emphasises specific area. Instead of making a single colour brighter or darker, his well understanding of each colour's value helps him to form different shades of colours in the shadows without breaking the tonal equality.





▼ My photograph

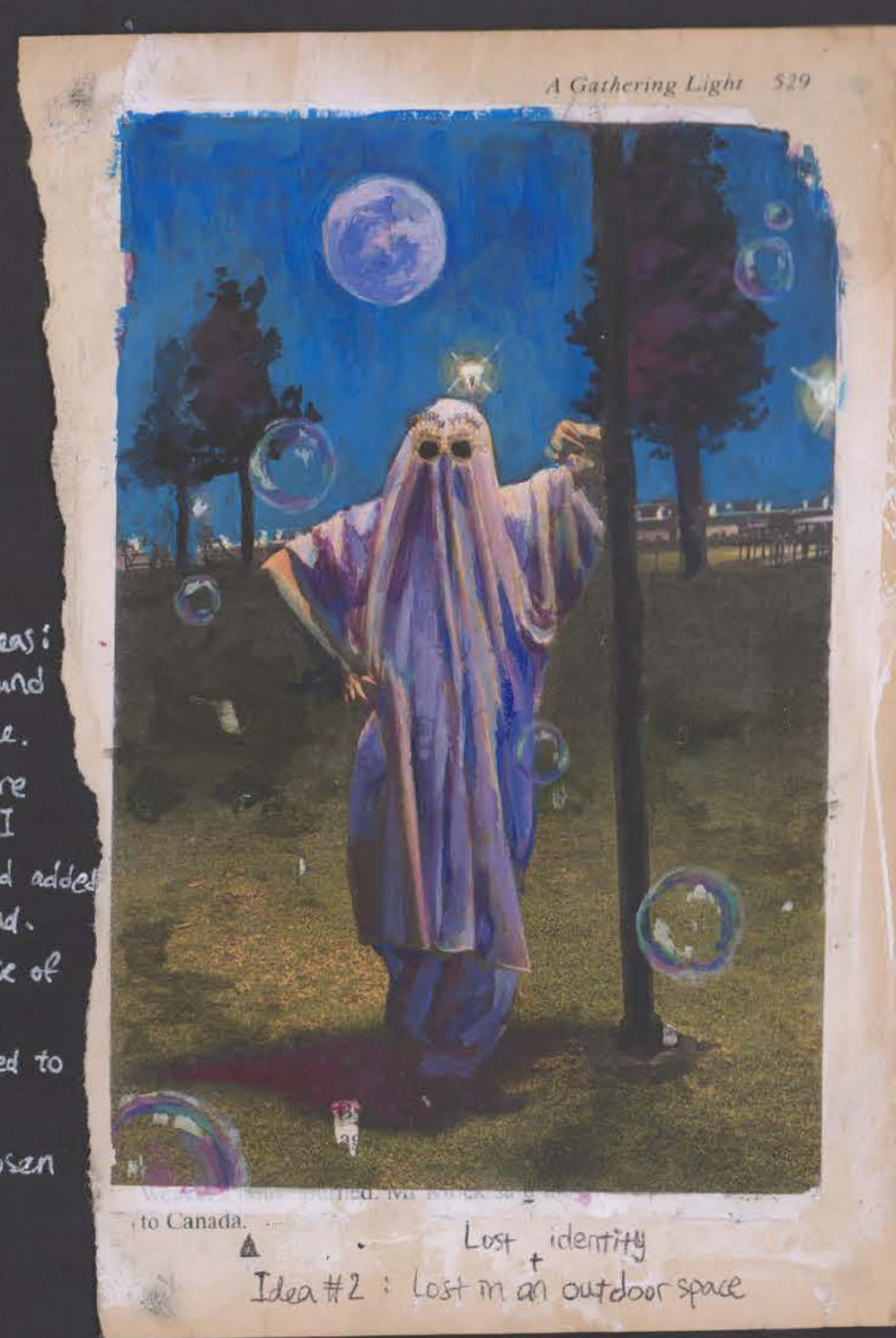


There is a conflict between two ideas: sticking with the balloons background or switching to an outdoor space. To make overall visual effect more abstract for the outdoor idea, I changed the figure's clothing and added surreal elements to the background. However, it still reduces the sense of being 'lost in a place' and it will cause more difficulties if I wanted to increase the number of figures. Therefore, the first idea is chosen for further development.

▼ My photograph



▼ A photo transfer edited using acrylic paint.



# Developing an idea

Colour scheme test: Andrew Hem usually shades with the colour blue and I decided to enhance it with the use of yellow and hot pink as highlights.

▼ My photograph



This piece can be developed further by making the figures in different shade of colours or including surreal elements in the environment (water flooded to feet etc.), but the main point here is to understand the difference in perspective and reflection of the floor when I add another figure in.



▲ My photograph

The ghost figure can be combined with the balloons background idea. ▼

I tried to paint on this surface that is a combination of book pages and colour paper, expecting there will be a special variety of colours, but it just seems to be too chaotic and confusing. ▼



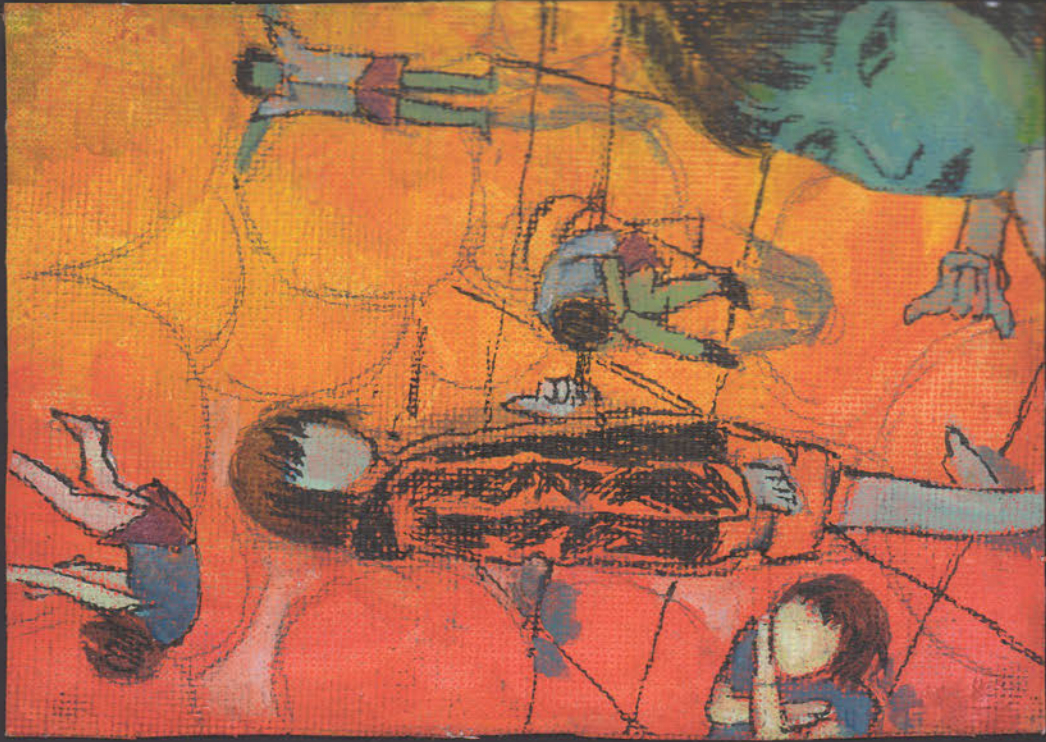
▲ This idea of glowing figure in the dark can be applied in the final piece as the figures look very dark in my photographs due to backlight.







Thumbnail for final piece



Theme: Lost in a space

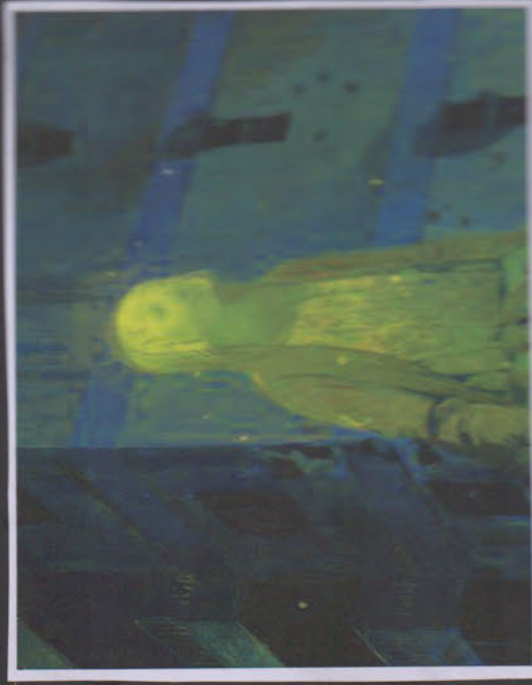
- Repetition of the same figure to present different physical and mental states.
- Differentiate the figure that is not in uniform with others by more realistic shading and colour scheme.

My own photographs



Using pink and blue for shading can make everything more vivid, giving a more lively feeling. Besides, they help to blend colours that usually don't work well together.

As the saturated red background can be considered a "dark" colour, I attempted to bring the figure out by brightening the skin. I have painted everything primarily white but the shadows are saturated so it doesn't look too simple. To improve this, I will use less white and mix it with other colours to form combinations of shades.



The idea of glowing is inspired by Andrew Hem's "In My Shoes."



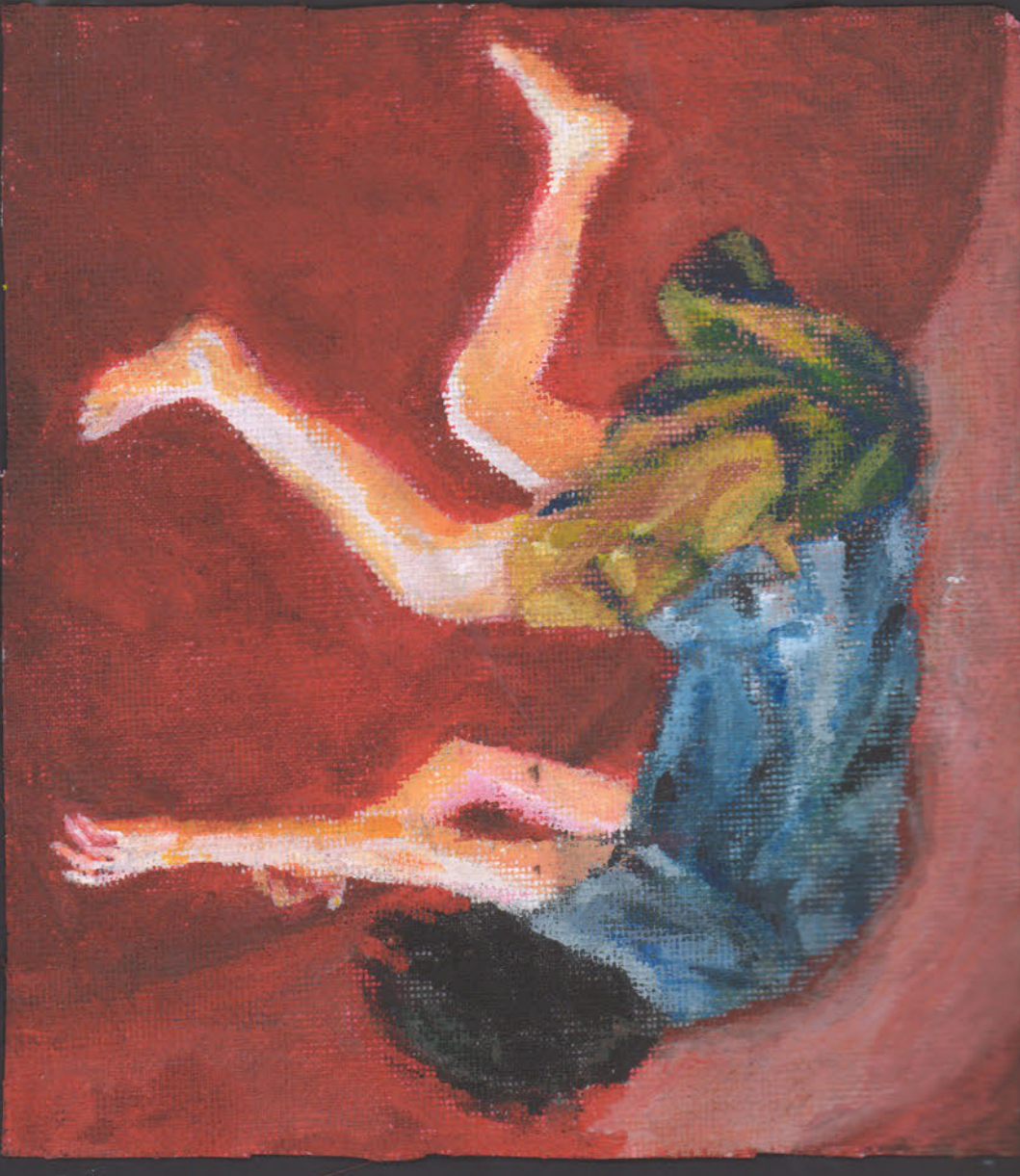
I'm thinking of combining the two colours of light in the background and changing the colour scheme of the figures depending on their background colour. For instance, skin tone will be brighter (glowing effect) if the figure is in a red background, and switch to a green or blue colour when the background is yellow.



My own photographs



## Practising my Final Idea



This study is done on the back of a piece of canvas since I found it difficult to paint details at the front and wanted to test if the back will be better. However, it is even more renewed, which is not the surface I'm going to use in the exam, besides I'm considering using an MDF board.

Reference:  
One of the painting from Andrew Hem's "Dream But Don't Sleep"

