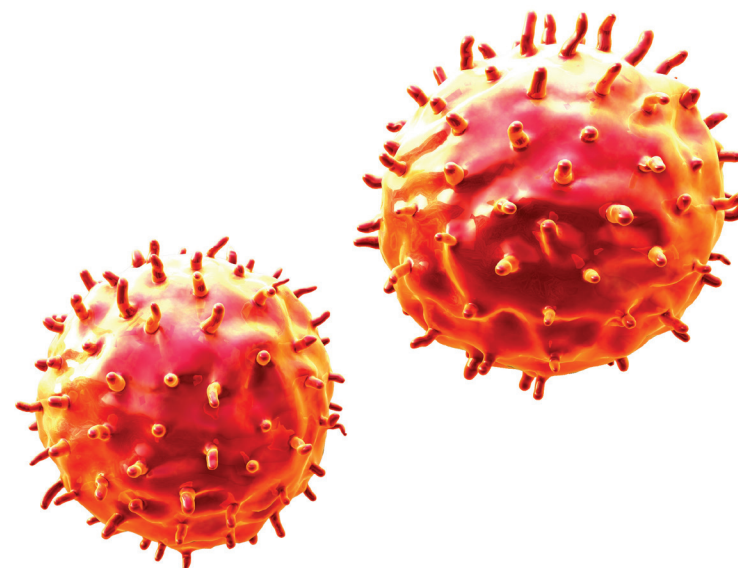


# Interactive Example Candidate Responses

Paper 3 (May / June 2016), Question 4

**Cambridge IGCSE™**  
**Biology 0610**



In order to help us develop the highest quality resources, we are undertaking a continuous programme of review; not only to measure the success of our resources but also to highlight areas for improvement and to identify new development needs.

We invite you to complete our survey by visiting the website below. Your comments on the quality and relevance of our resources are very important to us.

[www.surveymonkey.co.uk/r/GL6ZNJB](http://www.surveymonkey.co.uk/r/GL6ZNJB)

Would you like to become a Cambridge International consultant and help us develop support materials?

Please follow the link below to register your interest.

[www.cambridgeinternational.org/cambridge-for/teachers/teacherconsultants/](http://www.cambridgeinternational.org/cambridge-for/teachers/teacherconsultants/)

Copyright © UCLES 2017

Cambridge Assessment International Education is part of the Cambridge Assessment Group. Cambridge Assessment is the brand name of the University of Cambridge Local Examinations Syndicate (UCLES), which itself is a department of the University of Cambridge.

UCLES retains the copyright on all its publications. Registered Centres are permitted to copy material from this booklet for their own internal use. However, we cannot give permission to Centres to photocopy any material that is acknowledged to a third party, even for internal use within a Centre.

4 Choose words from the list to complete the sentences about hormones.

Each word may be used once, more than once, or not at all.

adrenaline	blood	decrease	glands
increase	insulin	nerves	main
saliva	system	target	urine

Hormones are chemicals produced by adrenaline glands

Hormones are carried round the body by the blood

A hormone affects the activity of one part of the body called the target organ.

After a person has eaten a meal the pancreas releases the hormone insulin

One of the effects of this hormone is to lower the glucose level in the blood [5]

[Total: 5]

Your  
Mark

4

Q4	Mark scheme
	<p>glands ;</p> <p>blood ;</p> <p>target ;</p> <p>insulin ;</p> <p>blood ;</p> <p>5 marks</p>

4 Choose words from the list to complete the sentences about hormones.

Each word may be used once, more than once, or not at all.

adrenaline	blood	decrease	glands
increase	insulin	nerves	main
saliva	system	target	urine

Hormones are chemicals produced by .....glands.....

Hormones are carried round the body by the .....blood.....

A hormone affects the activity of one part of the body called the .....main..... organ.

After a person has eaten a meal the pancreas releases the hormone .....insulin.....

One of the effects of this hormone is to lower the glucose level in the .....urine..... [5]

[Total: 5]

Your  
Mark

4

Q4	Mark scheme
	<p>glands ;</p> <p>blood ;</p> <p>target ;</p> <p>insulin ;</p> <p>blood ;</p> <p>5 marks</p>

4 Choose words from the list to complete the sentences about hormones.

Each word may be used once, more than once, or not at all.

adrenaline	blood	decrease	glands
increase	insulin	nerves	main
saliva	system	target	urine

Hormones are chemicals produced by ..... blood .....

Hormones are carried round the body by the ..... blood ..... glands .....

A hormone affects the activity of one part of the body called the ..... main ..... organ.

After a person has eaten a meal the pancreas releases the hormone ..... insulin .....

One of the effects of this hormone is to lower the glucose level in the ..... urine ..... [5]

[Total: 5]

Your  
Mark

4

Q4	Mark scheme
	<p>glands ; blood ; target ; insulin ; blood ;</p> <p>5 marks</p>

Cambridge Assessment International Education  
The Triangle Building, Shaftesbury Road, Cambridge, CB2 8EA, United Kingdom  
t: +44 1223 553554  
e: [info@cambridgeinternational.org](mailto:info@cambridgeinternational.org) [www.cambridgeinternational.org](http://www.cambridgeinternational.org)

Copyright © UCLES September 2017