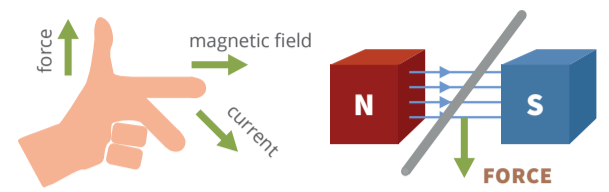


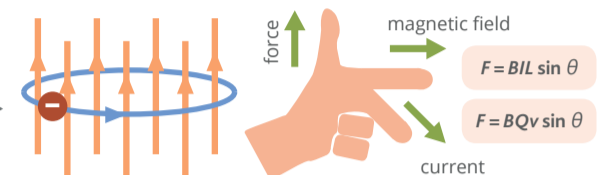
22.1 Concept of a magnetic field



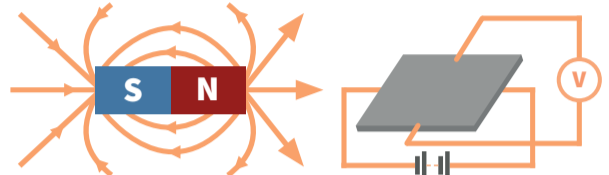
22.2 Force on a current-carrying conductor



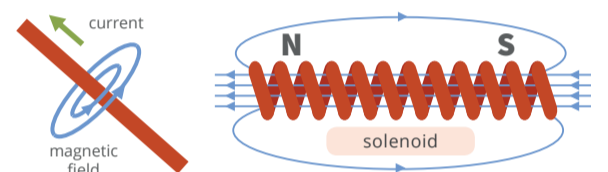
Fleming's left hand rule



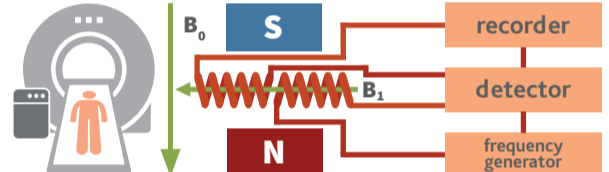
22.3 Force on a moving charge



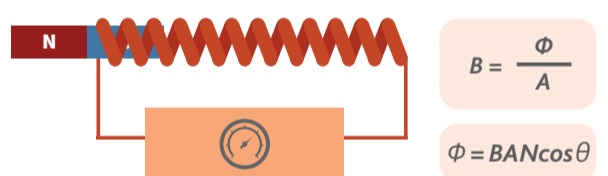
2.1 Measurements



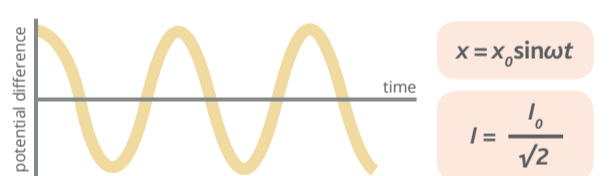
22.4 Magnetic fields due to currents



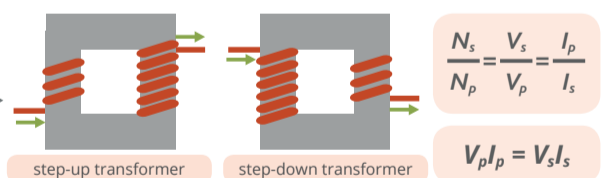
22.5 Nuclear magnetic resonance imaging



23.1 Laws of electromagnetic induction



24.1 Characteristics of alternating currents



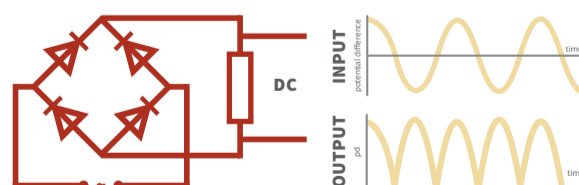
24.2 The transformer



24.3 Transmission of electrical energy



AC and DC



24.4 Rectification



AC and DC

